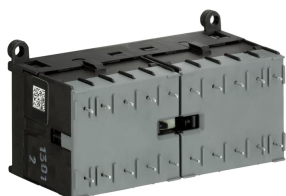


PRODUCT-DETAILS

# VB6-30-10-P-85

## VB6-30-10-P-85 Mini Reversing Contactor 380 ... 415 V AC - 3 NO - 0 NC - Soldering Pins



### Informations générales

|                              |   |
|------------------------------|---|
| Extension du type de produit | VB6-30-10-P-85  |
| Code de produit              | GJL1211909R8105   |
| EAN                          | 4013614187742   |
| Description courte           | VB6-30-10-P-85 Mini Reversing Contactor 380 ... 415 V AC - 3 NO - 0 NC - Soldering Pins   |
| Description longue           | The VB6-30-10-P mini reversing contactor is a compact 3 pole contactor with 1 auxiliary contact, soldering pins and normal mechanical interlock. They are ideally suited for applications where reliability is a must and space is at a premium. Mini reversing contactors are used in residential buildings, commercial buildings and industrial applications for the control of three-phase motor loads up to 4 kW (AC-3). Further features are the silent coil, a switch position indication and the integrated possibility for rail mounting. |

### Commande

|                  |          |
|------------------|----------|
| Quantité minimum | 1 pièce  |
| Code douanier    | 85365080 |

### Downloads Préférés

|  |                 |
|--|-----------------|
| Fiche produit, informations techniques | 1SBC100214C0202 |
| Instructions et manuels                | 2CDC102046M6801 |
| CAD Dimensional Drawing                | 2CDC001079B0201 |

## Dimensions

|                      |          |
|----------------------|----------|
| Produit Largeur Net  | 96.2 mm  |
| Produit Hauteur Net  | 57.5 mm  |
| Produit Longueur Net | 47.7 mm  |
| Poids net            | 0.345 kg |

## Technique

|  |  |
|--|--|
| Nombre de pôles  | 3  |
| Tension  | Circuit auxiliaire 690 V AC<br>Circuit auxiliaire 250 V DC<br>Circuit principal 690 V AC<br>Circuit principal 220 V DC   |
| Fréquence assignée (f)                                     | Circuit de commande 400 Hz<br>Circuit de commande 50 Hz<br>Circuit de commande 60 Hz<br>Circuit principal 60 Hz<br>Circuit principal 50 Hz<br>Circuit principal DC         |
| Tension assignée de tenue aux chocs ( $U_{imp}$ )          | Circuit principal 6 kV   |
| Tension assignée d'isolement ( $U_i$ )                     | 690 V<br>acc. to UL/CSA 600 V  |
| Number of Main Contacts NC                                 | 0  |
| Number of Main Contacts NO                                 | 3  |
| Courant assignée d'emploi AC-1 ( $I_e$ )                   | (220 / 240 V) 40 °C 12 A<br>(220 / 240 V) 55 °C 12 A<br>(380 / 440 V) 40 °C 12 A<br>(380 / 440 V) 55 °C 12 A<br>(690 V) 40 °C 6 A<br>(690 V) 55 °C 6 A                     |
| Puissance assignée d'emploi AC-3 ( $P_e$ )                 | (230 V) Three Phase 2.2 kW<br>(400 V) Three Phase 4 kW<br>(500 V) Three Phase 4 kW<br>(690 V) Three Phase, NO 3 kW   |
| Courant assigné de courte durée admissible ( $I_{cw}$ )    | at 40 °C Ambient Temp, in Free Air, from a Cold State 10 s 64 A  |
| Number of Auxiliary Contacts NC                            | 0  |
| Number of Auxiliary Contacts NO                            | 1  |
| Courant assignée d'emploi AC-15 ( $I_e$ )                  | (440 V AC) 3 A<br>(24 V) 4 A<br>(120 V) 4 A<br>(240 V) 4 A<br>(500 V) 2 A<br>(380 / 400 V) 3 A   |
| Courant assignée d'emploi DC-13 ( $I_e$ )                  | (24 V) 2.5 A<br>(110 V) 0.7 A<br>(220 / 240 V) 0.4 A   |
| Courant thermique conventionnel à l'air libre ( $I_{th}$ ) | Main Circuit 12 A  |
| Rated Control Circuit Voltage ( $U_c$ )                    | 380 ... 415 V AC   |
| Plage d'utilisation de la bobine selon                     | (acc. to IEC 60947-4-1) for AC supply 0.85 ... 1.1 x $U_c$ (at $\theta \leq 55$ °C)<br>(acc. to IEC 60947-4-1) for DC supply 0.85 ... 1.1 x $U_c$ (at $\theta \leq 55$ °C) |
| Indice de protection                                       | Auxiliary Circuit Terminals IP20   |

|  |  |
|--|--|
|  | Control Circuit Terminals IP20<br>Main Circuit Terminals IP20  |
| Degré de pollution                     | 3  |
| Durabilité mécanique                   | 10000000 cycle   |
| Minimum Switching Capacity             | Auxiliary Circuit 17 V<br>Auxiliary Circuit 5 mA   |
| Maximum Electrical Switching Frequency | (AC-1) 300 cycles per hour<br>(AC-15) 600 cycles per hour<br>(AC-3) 600 cycles per hour<br>(DC-1) 600 cycles per hour<br>(DC-13) 600 cycles per hour<br>(DC-3) 600 cycles per hour |
| Montage sur rail DIN                   | TH35-15 (35 x 15 mm Mounting Rail) acc. to IEC 60715<br>TH35-7.5 (35 x 7.5 mm Mounting Rail) acc. to IEC 60715   |
| Power Loss                             | at Rated Operating Conditions AC-1 per Pole 1 W  |
| Normes et standards                    | IEC/EN 60947-1<br>IEC/EN 60947-4-1<br>IEC/EN 60947-5-1<br>UL 60947-1<br>UL 60947-4-1   |

## Technique UL/CSA

|                                  |  |
|----------------------------------|--|
| Maximum Operating Voltage UL/CSA | Circuit principal 600 V AC   |
| Full Load Amps Motor Use         | (115 V AC) Single Phase 5.8 A<br>(200 V AC) Three Phase 4.8 A<br>(220 ... 240 V AC) Three Phase 6.8 A<br>(230 V AC) Single Phase 4.9 A<br>(440 ... 480 V AC) Three Phase 4.8 A<br>(550 ... 600 V AC) Three Phase 1.7 A |
| Puissance nominale UL/CSA        | (115 V AC) Single Phase 0.25 Hp<br>(200 V AC) Three Phase 1 Hp<br>(220 ... 240 V AC) Three Phase 2 Hp<br>(230 V AC) Single Phase 0.5 Hp<br>(440 ... 480 V AC) Three Phase 3 Hp<br>(550 ... 600 V AC) Three Phase 1 Hp  |
| General Use Rating UL/CSA        | (300 V AC) 8 A   |
| Contact Rating UL/CSA            | A600   |

## Environnement

|  |  |
|--|--|
| Température de l'air ambiant                   | Operation -20 ... +55 °C<br>Storage -40 ... +80 °C                     |
| Altitude de fonctionnement maximale autorisée  | 2000 m   |
| Résistance aux chocs selon CEI 60068-2-27      | 11 ms Pulse 15g  |
| Resistance to Vibrations acc. to IEC 60068-2-6 | 5g / 5 ... 150 Hz  |
| Statut RoHS                                    | Following EU Directive 2011/65/EU and Amendment 2015/863 July 22, 2019 |

## Certificats et Déclarations (Numéro de document)

|                                 |                     |
|---------------------------------|---------------------|
| CB Certificate                  | 1SAA938000-2002     |
| CQC Certificate                 | CQC2003010304064033 |
| cURus Certificate               | cUL_E191658         |
| Declaration of Conformity - CCC | 2020980304001854    |
| Déclaration de Conformité       | 1SAD101100-3101     |

- CE

|                                     |                  |
|-------------------------------------|------------------|
| Declaration of Conformity<br>- UKCA | 1SAD201100-3101  |
| DNV GL Certificate                  | 1SAA938000-0306  |
| EAC Certificate                     | 1SAA920000-2702  |
| KC Certificate                      | 1SAA938000-1501  |
| Certificat RMRS                     | 1SAA938000-0704  |
| Certificat UL                       | E191658-19880915 |

## Emballage

|                                |               |
|--------------------------------|---------------|
| Emballage Niveau 1<br>Unités   | 5 pièce       |
| Emballage Niveau 1<br>Largeur  | 115 mm        |
| Emballage Niveau 1<br>Hauteur  | 64 mm         |
| Emballage Niveau 1<br>Longueur | 280 mm        |
| Emballage Niveau 1 Poids       | 1.795 kg      |
| Emballage Niveau 1 EAN         | 4013614414091 |

## Classifications

|                                   |   |
|-----------------------------------|---|
| Code de classification<br>d'objet | Q   |
| ETIM 4                            | EC000066 - Magnet contactor, AC-switching |
| ETIM 5                            | EC000010 - Starter combination            |
| ETIM 6                            | EC000010 - combinaison de contacteur      |
| ETIM 7                            | EC000010 - Combination of contactors      |
| ETIM 8                            | EC000010 - Combination of contactors      |
| eClass                            | V11.0 : 27371009                          |
| UNSPSC                            | 39121529                                  |

## Catégories

Produits basse tension → Produits de Contrôle, Protection et sécurité machines → Contacteurs → Mini contacteurs

