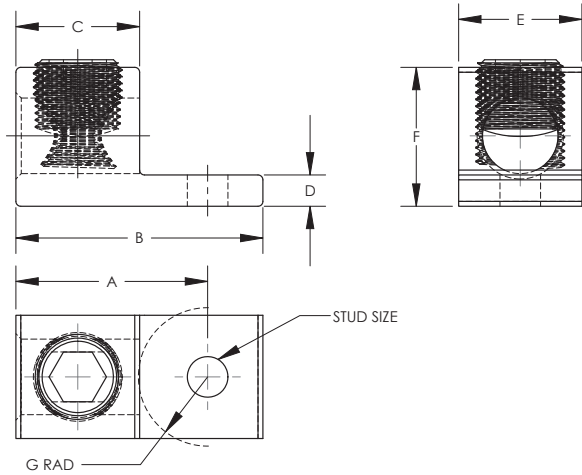


THIS COPY IS PROVIDED ON A RESTRICTED BASIS AND IS NOT TO BE USED IN ANY WAY DETRIMENTAL TO THE INTERESTS OF PANDUIT CORP.



**NOTES:**

1. MATERIAL:  
BODY - ALUMINUM, TIN PLATED  
SCREW - ALUMINUM, TIN PLATED  
(NOTE: LAMA6-14-QY & LAMA2-14-QY HAVE ZINC PLATED STEEL SCREWS)
2. CULUS LISTED FOR USE UP TO 600V & TEMPERATURE RATED 90°C (AL9CU)
3. DUAL RATED FOR USE WITH COPPER OR ALUMINUM STRANDED CODE CONDUCTOR
4. THESE PARTS ARE RoHS COMPLIANT
5. USE OF OXIDE INHIBITING JOINT COMPOUND LIKE PANDUIT CMP-100 RECOMMENDED FOR PAD TO PAD AND CONDUCTOR SURFACES
6. SEE INSTRUCTION SHEET T-MPI-223-PC FOR TIGHTENING TORQUE INFORMATION
7. PKG QTY:  
Q = 25



PART NUMBER	WIRE RANGE COPPER/ALUMINUM	WIRE STRIP LENGTH IN [mm]	STUD SIZE IN	DIMENSIONS - IN [mm]							HEX KEY*
				A ± .03 [.8]	B ± .06 [1.5]	C ± .04 [1]	D ± .02 [.5]	E ± .04 [1]	F ± .04 [1]	G ± .02 [.5]	
LAMA6-14-QY	14 AWG - 6 AWG	.38 [9.7]	1/4	.81 [20.6]	1.06 [27.0]	.37 [9.5]	.09 [2.3]	.50 [12.7]	.50 [12.7]	.43 [10.9]	SLOTTED
*LAMA6N-14-QY	14 AWG - 6 AWG	.38 [9.7]	1/4	.81 [20.6]	1.06 [27.0]	.38 [9.7]	.09 [2.4]	.38 [9.7]	.50 [12.7]	.43 [10.9]	SLOTTED
LAMA2-14-QY	14 AWG - 2 AWG	.47 [11.9]	1/4	.84 [21.3]	1.17 [29.8]	.47 [12]	.11 [2.7]	.50 [12.7]	.55 [13.9]	.38 [9.7]	SLOTTED
LAMA1/0-14-QY	14 AWG - 1/0 AWG	.63 [15.9]	1/4	1.06 [26.8]	1.47 [37.3]	.63 [15.9]	.19 [4.8]	.62 [15.7]	.77 [19.5]	.43 [10.9]	SLOTTED
LAMA1/0-56-Q	14 AWG - 1/0 AWG	.62 [15.7]	5/16	1.22 [30.9]	1.47 [37.3]	.62 [15.7]	.19 [4.8]	.62 [15.7]	.79 [20.0]	.60 [15.2]	SLOTTED
LAMA2/0-14-QY	14 AWG - 2/0 AWG	.62 [5.7]	1/4	1.08 [27.5]	1.46 [37.1]	.63 [15.9]	.19 [4.8]	.63 [15.9]	.77 [19.5]	.41 [10.4]	3/16
LAMA250-56-QY	6 AWG - 250 kcmil	1.00 [25.4]	5/16	1.54 [39.2]	1.99 [50.5]	1.00 [25.3]	.25 [6.4]	.99 [25.2]	1.12 [28.4]	.56 [14.2]	5/16

\*LAMA6N-14-QY ONLY AVAILABLE IN ASIA-PACIFIC REGION

REV	DATE	BY	CHK	APR	DESCRIPTION	ECN	TITLE	DRAWN BY	DATE	CHK	SCALE	DRAWING NUMBER	SHEET 1 OF 1	SIZE	
20	8/22	JHNU	JHNU	ALP	A. REVISED NOTE 6 TO REFERENCE INSTRUCTION SHEET T-MPI-223-PC	125543	LAMA SERIES 6AWG THRU 250kcmil ALUMINUM MECHANICAL LUGS CUSTOMER DRAWING	JHNU	2/06		NONE	10N006AR-NC		B	
19	7/22	JHNU	JADE	JADE	REVISED A DIMENSION REFERENCE TO BACK OF THE CONNECTOR	121865		ITEM REVISION NAME 10N006AR/20							
18	1/20	JHNU	RGB	RGB	REVISED B DIM FOR LAMA2/0-14-QY: 1.46 [37.1] WAS 1.47 [37.3] REVISED C DIM FOR LAMA2/0-14-QY: .63 [15.9] WAS .62 [15.7] REVISED D DIM FOR LAMA2/0-14-QY: .19 [4.9] WAS .19 [4.8] REVISED E DIM FOR LAMA2/0-14-QY: .63 [15.9] WAS .62 [15.8] REVISED F DIM FOR LAMA2/0-14-QY: .77 [19.5] WAS .79 [20.0] REVISED B DIM FOR LAMA250-56-QY: 1.99 [50.5] WAS 2.01 [51.0] REVISED C DIM FOR LAMA250-56-QY: 1.00 [25.3] WAS 1.00 [25.4] REVISED F DIM FOR LAMA250-56-QY: 1.12 [28.4] WAS 1.13 [28.6]	057109		DATASET FILE NAME 10N006AR-NC r20.SLDDRW							
							UNLESS OTHERWISE SPECIFIED, DIMENSIONAL TOLERANCES ARE: IN [mm]	 THIRD ANGLE PROJECTION							
								 MATERIAL							
								 SEE NOTES							