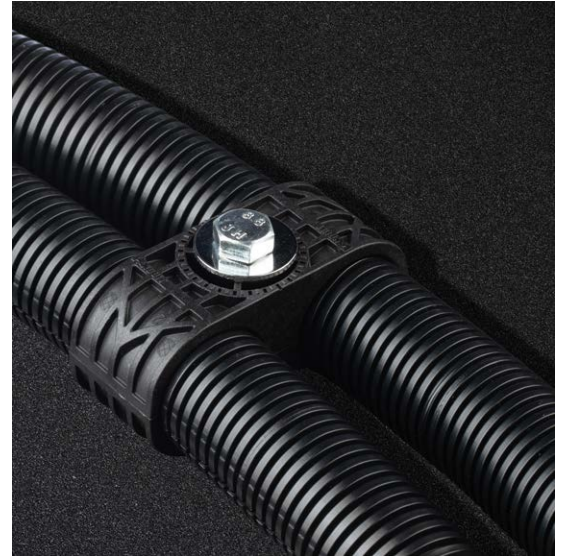


## Corrugated Loom Clamps

Panduit corrugated loom clamps are designed to secure and route electrical cables, and hydraulic or pneumatic hoses in heavy duty vehicle applications. These products are produced with highly durable, light weight resins that have been tested to sustain the most challenging installations. Typical applications include but are not limited to heavy duty trucking, off road vehicles, agriculture and construction equipment, and electric vehicles (EV).



### Key Features and Benefits

Anti-Rotation feature facilitates easy connection of clamp halves



Rib Features for secure contact with corrugated loom tubing

Clamps provide 1.5" center-to-center spacing between cables to help eliminate abrasion

Bolt/Stud facilitates mounting to frame rail; clamps have a thread-retaining feature to help secure clamp during installation


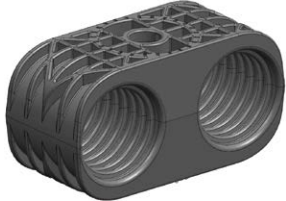
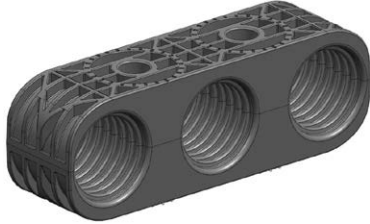


Locking feature for ease of stacking multiple clamps

# Corrugated Loom Clamps

## Ordering Information

Clamps are sold in packages of either 100 halves (50 complete clamps) or 250 halves (125 complete clamps). They come in different configurations for single, 2-position and 3-position and accommodate 5/8", 3/4", 7/8" and 1" corrugated loom tubing.

Part Number	Description	Package Qty.	Paired Clamps Qty.	Images (note, full paired clamp shown)
CLC62X1S8TL370	1-Position 5/8" Corrugated Loom Clamp	250	125	
CLC75X1S8TL370	1-Position 3/4" Corrugated Loom Clamp			
CLC88X1S8TL370	1-Position 7/8" Corrugated Loom Clamp			
CLC100X1S8TL370	1-Position 1" Corrugated Loom Clamp			
CLC62X2S8TL370	2-Position 5/8" Corrugated Loom Clamp	250	125	
CLC75X2S8TL370	2-Position 3/4" Corrugated Loom Clamp			
CLC88X2S8TL370	2-Position 7/8" Corrugated Loom Clamp			
CLC100X2S8TL370	2-Position 1" Corrugated Loom Clamp			
CLC62X3S8C370	3-Position 5/8" Corrugated Loom Clamp	100	50	
CLC75X3S8C370	3-Position 3/4" Corrugated Loom Clamp			
CLC88X3S8C370	3-Position 7/8" Corrugated Loom Clamp			
CLC100X3S8C370	3-Position 1" Corrugated Loom Clamp			

## Technical Information

Continuous Use Temperature	Material	UL94 Flammability Rating	Channel spacing (center to center distance between cables)	Bolt size
-40C to 135C; -40F to 275F	Nylon 6.6, 13% Glass-filled, Heat Stabilized, for added strength during installation and for longevity in rugged environments	HB	1.5" (38mm)	5/16 (M8)

### WORLDWIDE SUBSIDIARIES AND SALES OFFICES

PANDUIT CANADA  
Markham, Ontario  
cs-cdn@panduit.com  
Phone: 800.777.3300

PANDUIT EUROPE LTD.  
London, UK  
cs-emea@panduit.com  
Phone: 44.20.8601.7200

PANDUIT SINGAPORE PTE. LTD.  
Republic of Singapore  
cs-ap@panduit.com  
Phone: 65.6305.7575

PANDUIT JAPAN  
Tokyo, Japan  
cs-japan@panduit.com  
Phone: 81.3.6863.6000

PANDUIT LATIN AMERICA  
Guadalajara, Mexico  
cs-la@panduit.com  
Phone: 52.33.3777.6000

PANDUIT AUSTRALIA PTY. LTD.  
Victoria, Australia  
cs-aus@panduit.com  
Phone: 61.3.9794.9020

For a copy of Panduit product warranties, log on to [www.panduit.com/warranty](http://www.panduit.com/warranty)

For more information

Visit us at [www.panduit.com](http://www.panduit.com)

Contact Customer Service by email: [cs@panduit.com](mailto:cs@panduit.com)  
or by phone: 800.777.3300

**PANDUIT**<sup>®</sup>

©2022 Panduit Corp.  
ALL RIGHTS RESERVED.  
Printed in the U.S.A.  
CMCB5-WW-ENG  
3/2022