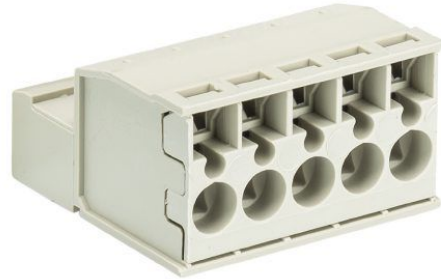


Fiche produit

Article n° 25.857.0753.0

PCB broches en-tête 8213 SUFK / 7 TOP



Article n°	25.857.0753.0
EAN	4015573562745
Unité de commande	50 Piece(s)

certificats/approbations



Données techniques

général

Espacement modulaire	5,08 mm
Type de connexion	Raccordement à ressort
processus de soudure	Aucun
Répartiteur compact	boîte
Nombre de pôles	7
Marquage	Oui
Fixation	Aucun
Sens de branchement du connecteur	180°

Données techniques

Section transversale nominale	2,5 mm ²
Courant nominal	12 A
Catégorie de surtension I	1000 V
Catégorie de surtension II	400 V
Catégorie de surtension III	250 V
Tension nominale d'impulsion	4 kV
longueur de fil	11 mm

données de connection

Section minimum fil rigide	0,14 mm ²
Section maximum fil rigide	2,5 mm ²
Section minimum multi-brins	0,14 mm ²
Section maximum multi-brins	2,5 mm ²
longueur de fil	11 mm

Données techniques UL/CSA

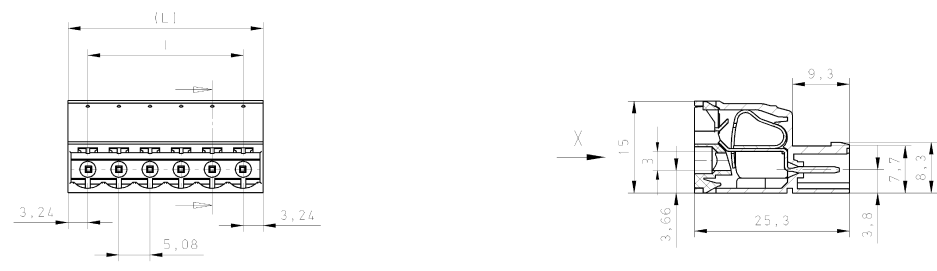
Section traversante norme UL	22-12 AWG
Tension UL	300 V
Câblage actuel	12 A
Câblage d'usine actuelle	12 A

Section traversante norme CSA	22-12 AWG
Tension CSA	300 V
CSA actuel	12 A

Autre

Type de matériau d'isolation	Thermo-plastique
Couleur	gris
hauteur	15 mm
Longueur	35,56 mm
profondeur	25,3 mm
matière Vis de fixation	Aucun
matière de base de contact	Acier
matière surface de contact	Sn

Dessin technique



gezeichnete Ausführung: 6-polig
drawn version: 6-poles

When this drawing is used for manufacturing, the manufacturer shall be responsible for checking it against the original drawing and for any necessary modifications. The manufacturer shall be responsible for any changes to the drawing which are not authorized by WIELAND.

When this drawing is used for manufacturing, the manufacturer shall be responsible for checking it against the original drawing and for any necessary modifications. The manufacturer shall be responsible for any changes to the drawing which are not authorized by WIELAND.

Teile - Nr. part - no.	Polzahl pole	[L]	l	Typ type
25.857.0253.0	2	11,56	5,08	8213 SUPK/2
25.857.0353.0	3	16,64	10,16	8213 SUPK/3
25.857.0453.0	4	21,72	15,24	8213 SUPK/4
25.857.0553.0	5	26,80	20,32	8213 SUPK/5
25.857.0653.0	6	31,88	25,40	8213 SUPK/6
25.857.0753.0	7	36,96	30,48	8213 SUPK/7
25.857.0853.0	8	42,04	35,56	8213 SUPK/8
25.857.0953.0	9	47,12	40,64	8213 SUPK/9
25.857.1053.0	10	52,20	45,72	8213 SUPK/10
25.857.1153.0	11	57,28	50,80	8213 SUPK/11
25.857.1253.0	12	62,36	55,88	8213 SUPK/12
25.857.1353.0	13	67,44	60,96	8213 SUPK/13
25.857.1453.0	14	72,52	66,04	8213 SUPK/14
25.857.1553.0	15	77,60	71,12	8213 SUPK/15
25.857.1653.0	16	82,68	76,20	8213 SUPK/16
25.857.1753.0	17	87,76	81,28	8213 SUPK/17
25.857.1853.0	18	92,84	86,36	8213 SUPK/18
25.857.1953.0	19	97,92	91,44	8213 SUPK/19
25.857.2053.0	20	103,00	96,52	8213 SUPK/20
25.857.2153.0	21	108,08	101,60	8213 SUPK/21
25.857.2253.0	22	113,16	106,68	8213 SUPK/22
25.857.2353.0	23	118,24	111,76	8213 SUPK/23
25.857.2453.0	24	123,32	116,84	8213 SUPK/24

Furthering nach DIN 7152/Externe system der. to DIN 7152. This DIN standard describes the envelope principle. According to the average principle, the deviation of form and position are limited by the size tolerances.

Furthering nach DIN 7152/Externe system der. to DIN 7152. This DIN standard describes the envelope principle. According to the average principle, the deviation of form and position are limited by the size tolerances.

Werkstoff/Material Farbe/color: grau/grey Beschichtung: schwarz printing: black mit 2:1	2008 Material Code 25.857.0253.0	Tag/Date None	Name T	Zeichnung Nr./Drawing No. 25.857.0253.0 01K	Maßstab/Scale 1:1
Maßstab/Scale: 1:1 Maßstab/Scale: 1:1 Maßstab/Scale: 1:1					

Weitere Daten siehe Katalog
further data see catalog

LP-Stecker
LP-STIFTLASTE
mit Federkraftanschluss, Rastermaß: 5,00mm
with spring clamp connection, pitch: 5,00mm