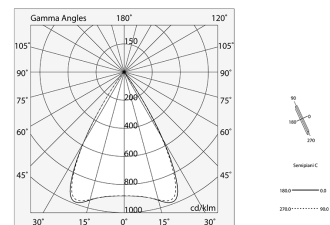
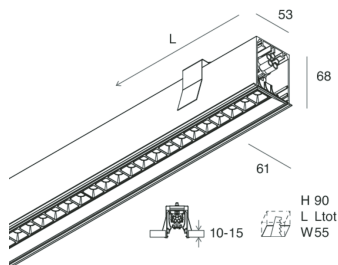
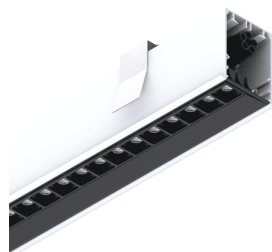


# HERO C

108846.01

**novalux**  
ITALIAN LIGHTING DESIGN SINCE 1948



## Features

Use: Indoor  
Type of installation: RECESSED INTO PLASTERBOARD  
Emission: DIRECT  
Optics: MICRO OPTICS  
Colour: WHITE  
Dimming: PUSH, DALI  
Emergency: NO  
L: 1428mm  
A: 61mm  
H: 68mm  
Made in: ITALY  
Warranty: 5 years  
Weight: 4.2kg

## Tech data

Luminaire input power: 40.5W  
Luminaire luminous flux: 3638lm  
IP: 40  
Insulation class: I  
Supply voltage: 220-240V 50/60Hz  
UGR: <19  
SELV: Si

## Source

Light source: LED  
Source power: 36W  
Colour temperature: 3000K  
CRI: >90  
Colour tolerance: 3 Step MacAdam  
LED lifespan: 50000h L80 B20

## Compliance

CEI EN 60598-1:2015 + A11:2009. IEC 60598-2:2015 2-1, 2-2

## Standards

Photobiological risk: RISK GROUP 0 Certified fixture in EXEMPT GROUP, in accordance with CEI EN 62471:2010-01, IEC TR 62778:2014.  
CAM edilizia: The product complies with the requirements for public buildings, ministerial decree of 23rd June 2022 n.256.

[View more product info](#)



Novalux S.r.l. via Marzabotto, 2 40050 Funo di Argelato (BO) Italy  
Tel: +39 051 860558 · Fax +39 051 6647859 · Mail: info@novalux.it · VAT number 00536541204 · novalux.com  
Company subject to the management and coordination by SLV GmbH

This technical data sheet is owned by Novalux S.r.l., all rights reserved. Novalux S.r.l. reserves the right to make changes without prior notice.

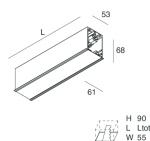
# HERO C

108846.01

novalux

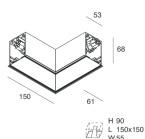
ITALIAN LIGHTING DESIGN SINCE 1948

## COMPLETION ACCESSORIES



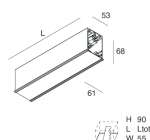
HERO C: MOD.CIECO 250 BIA

108852.01



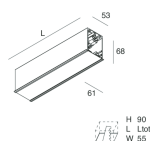
HERO C: MOD.CIECO ANG.DX 150 BIA

108854.01



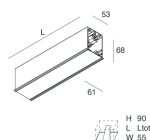
HERO C: MOD.CIECO 1120 BIA

108855.01



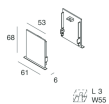
HERO C: MOD.CIECO 1400 BIA

108856.01



HERO C: MOD.CIECO 1680 BIA

108857.01



HERO C: COPPIA TESTATE BIA

108860.01



Novalux S.r.l. via Marzabotto, 2 40050 Funo di Argelato (BO) Italy  
Tel: +39 051 860558 · Fax +39 051 6647859 · Mail: info@novalux.it · VAT number 00536541204 · novalux.com  
Company subject to the management and coordination by SLV GmbH

This technical data sheet is owned by Novalux S.r.l., all rights reserved. Novalux S.r.l. reserves the right to make changes without prior notice.