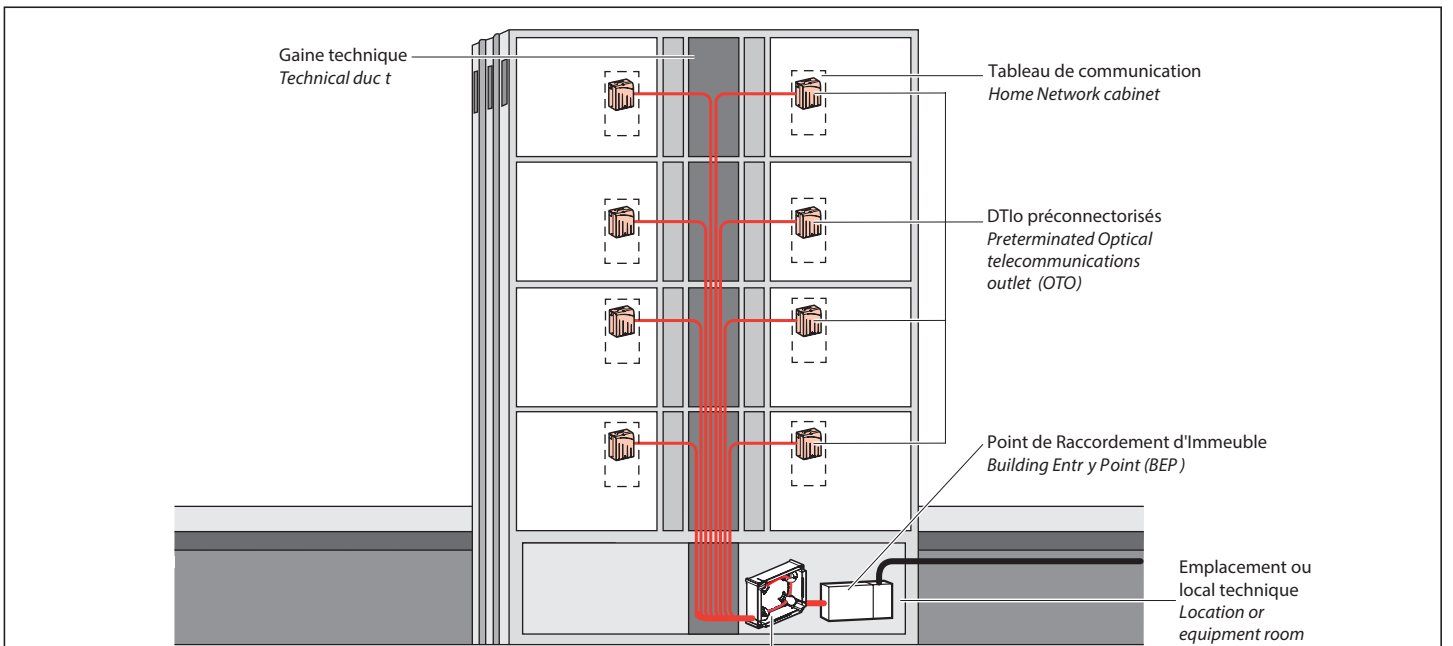
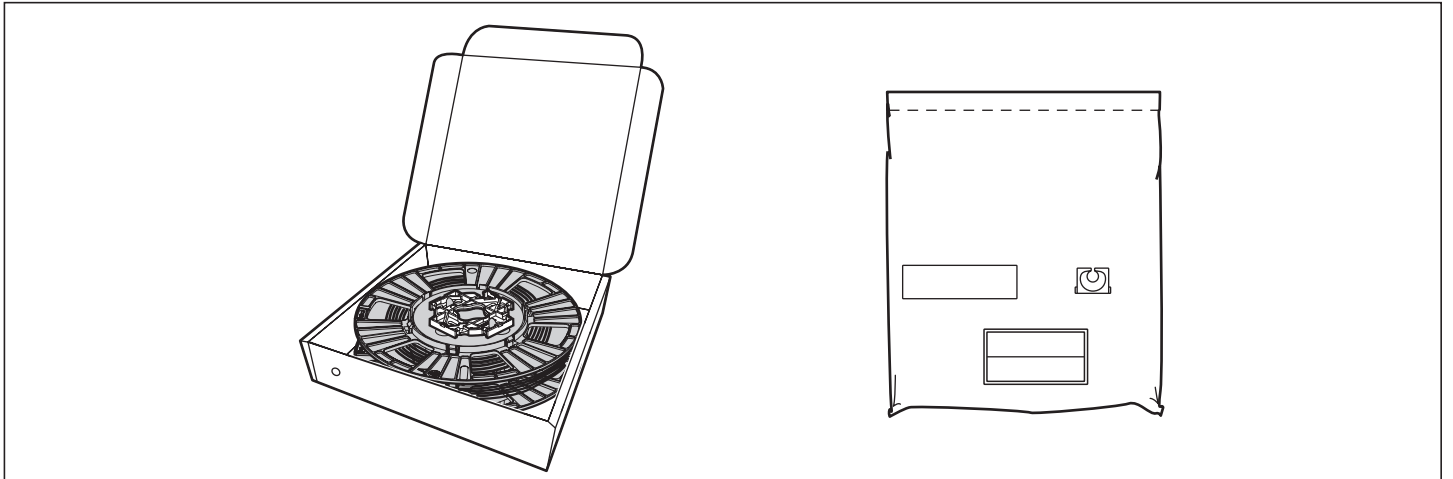
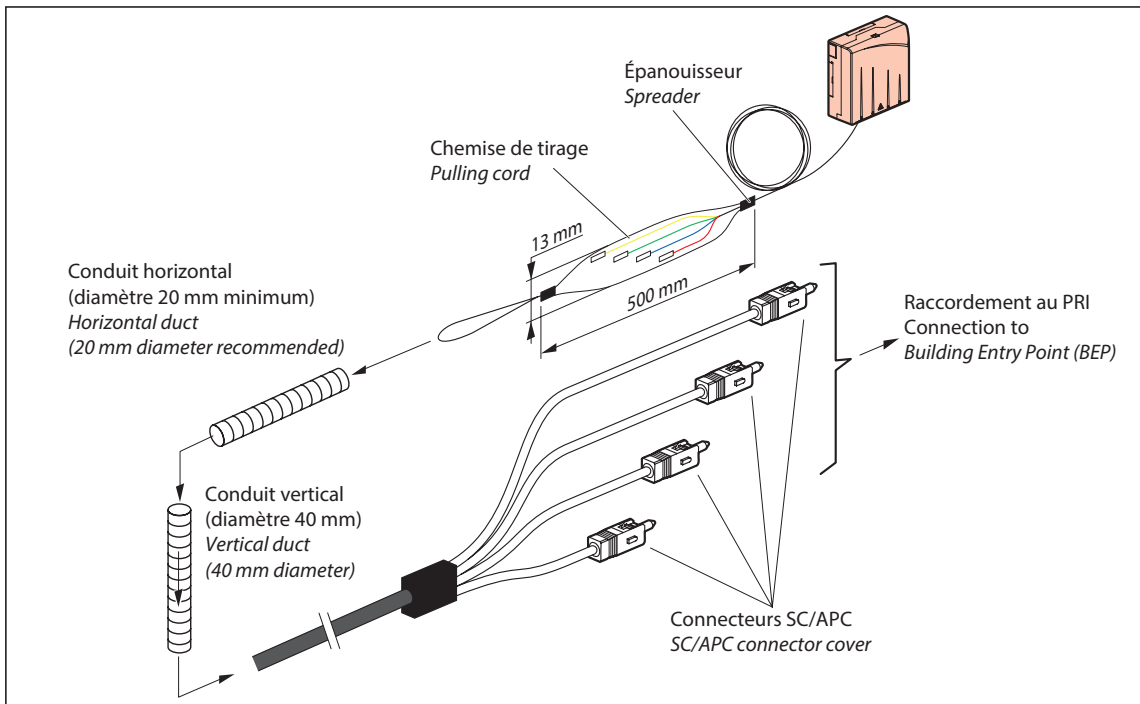


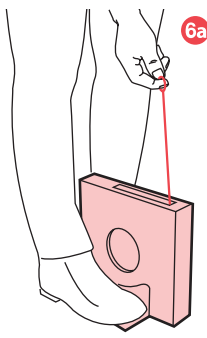
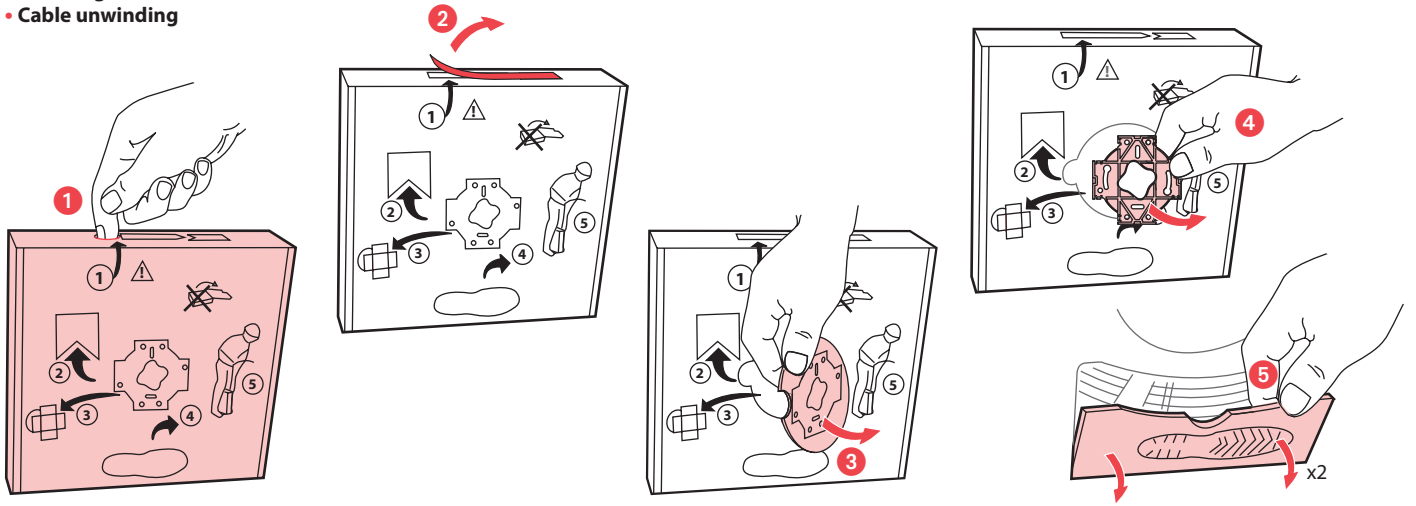
- Dispositif de Terminaison Intérieur optique (DTIo) préconnectorisé
 - Preterminated internal termination device
- 4 130 67/68/69/70



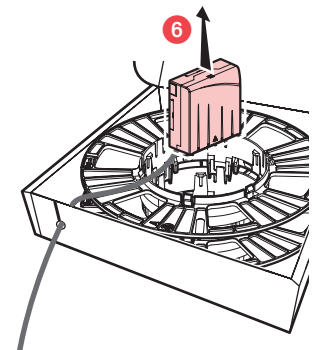
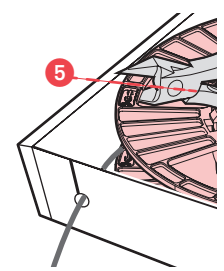
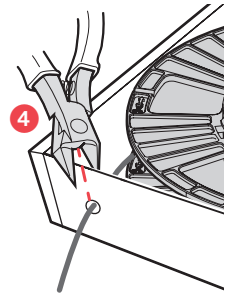
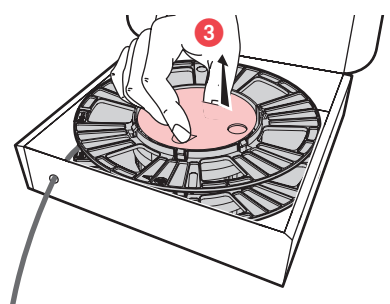
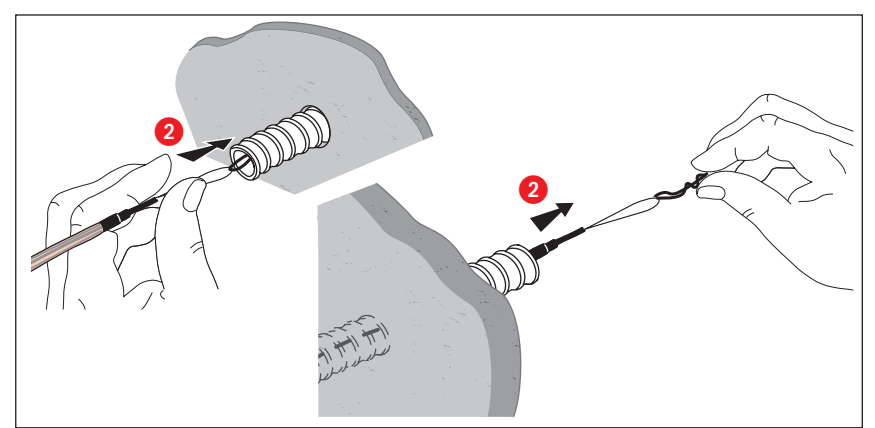
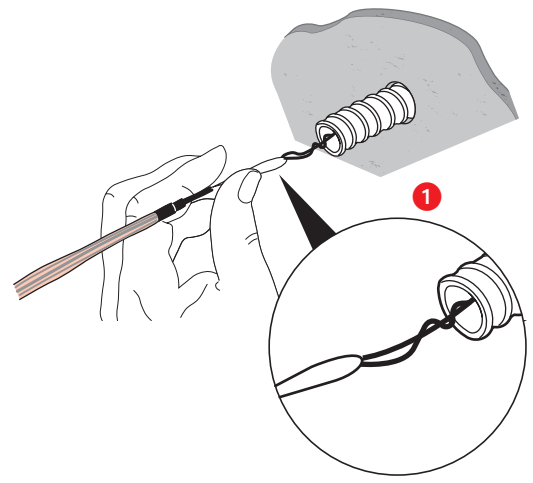
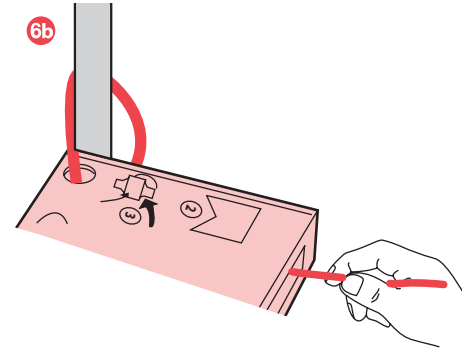
Boîtier de gestion des surlongueurs réf. 4 130 75
Excess length management box Cat. No. 4 130 75



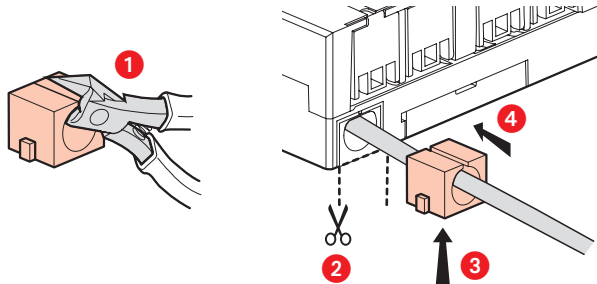
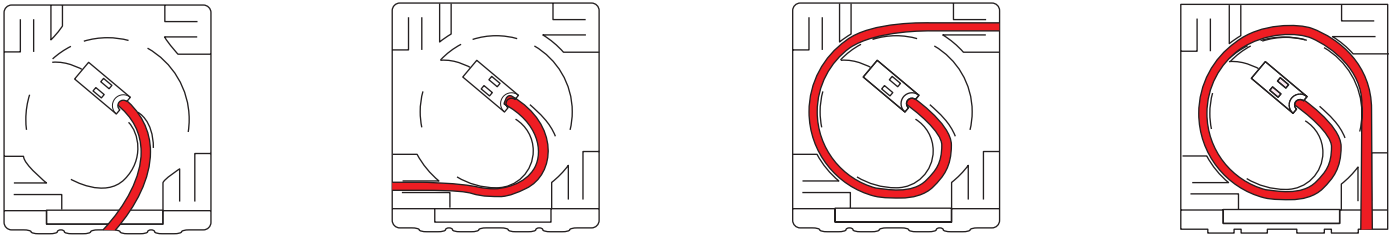
- Déroulage du câble
- Cable unwinding



Ou/or

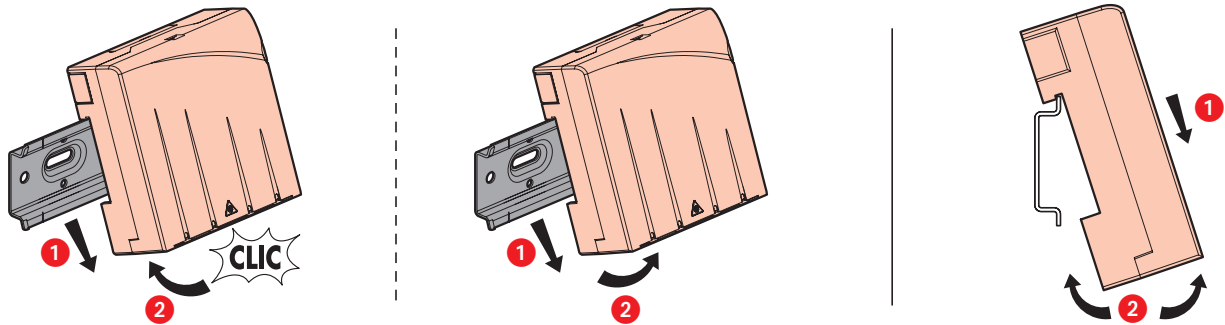


- Choix de l'entrée du câble
- Choice of cable entry

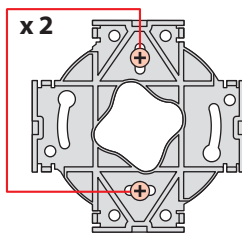


- Mise en place de la Prise terminale optique dans le tableau de communication
- Fitting the fibre terminal outlet inside the communication cabinet

- Montage et dépose
- Mounting and dismounting



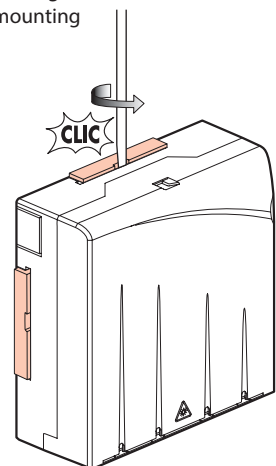
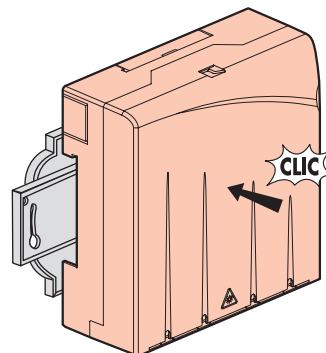
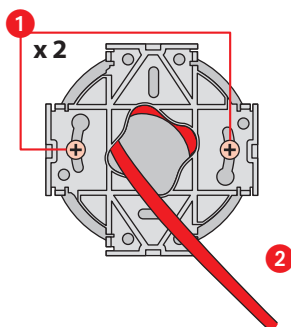
- Fixation type murale
- Wall surface mounting

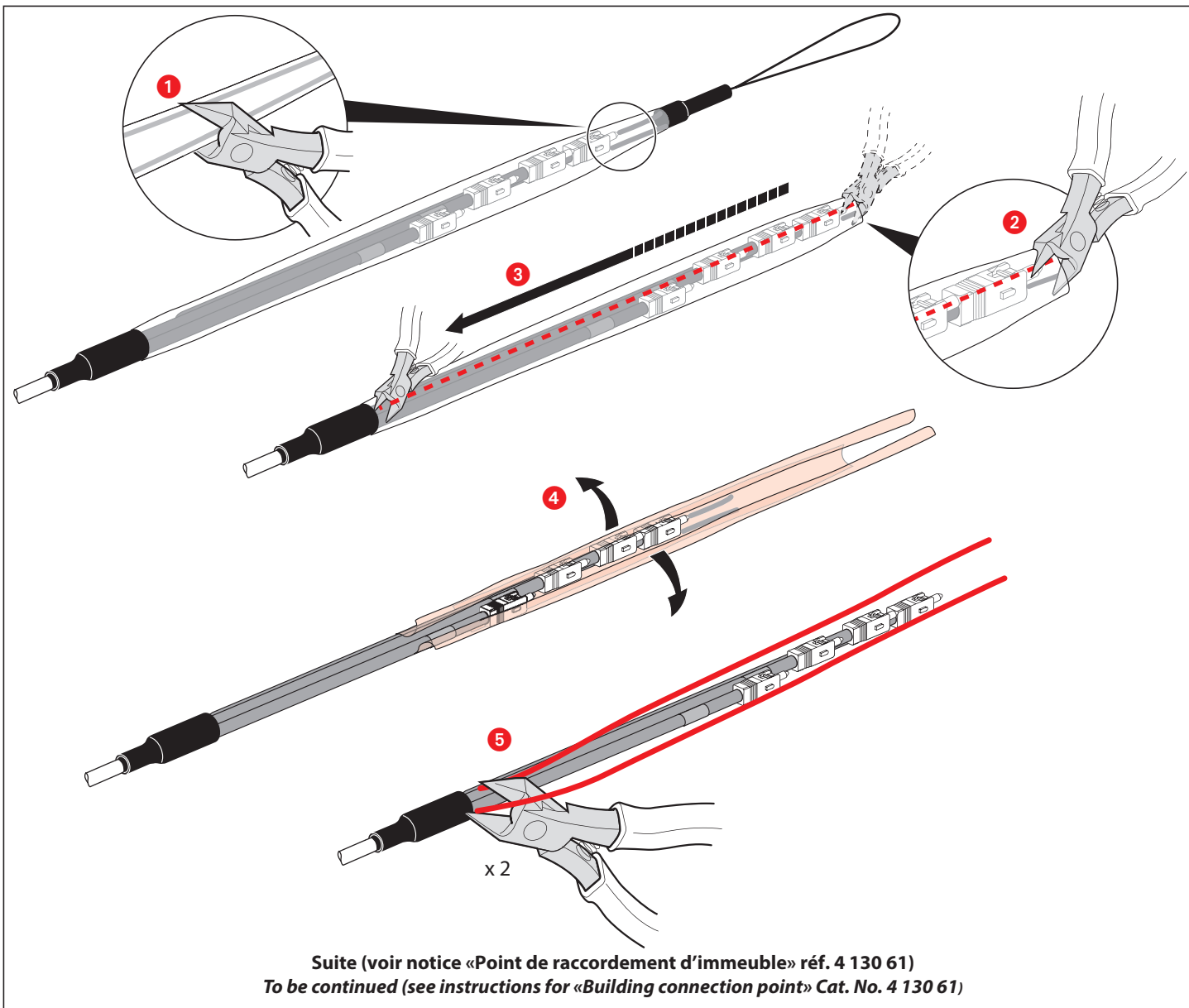


- Montage
- Mounting

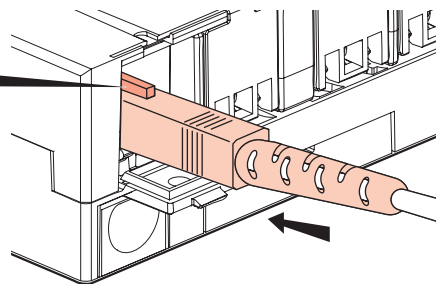
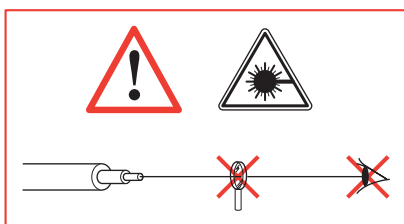
- Démontage
- Dismounting

- Fixation sur boîte d'encastement
- Wall-box mounting

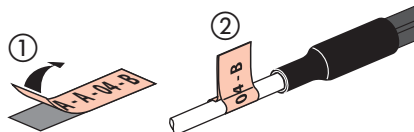
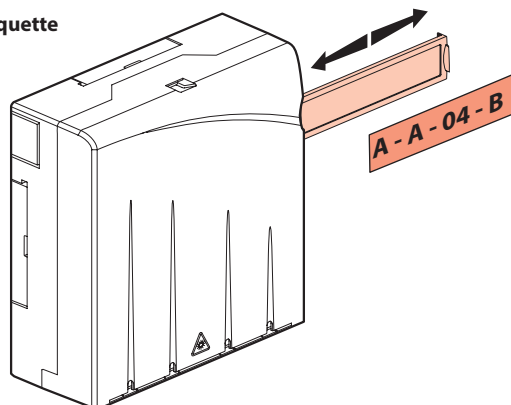




- Connexion
- Connection



- Fonctionnement porte étiquette
- Label Holder mechanism



⚠ Consignes de sécurité

Avant toute intervention, couper le courant.
Respecter strictement les conditions d'installation et d'utilisation.

FR LU BE CH

⚠ Safety instructions

Make sure the power supply is disconnected before any intervention.
Strictly comply with instructions for installation and use.

GB IE