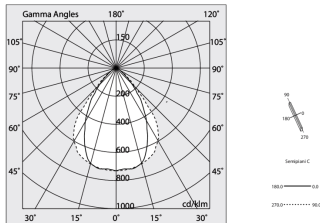
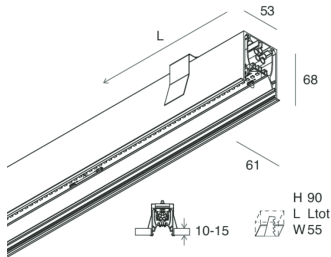
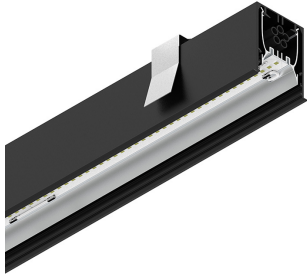


HERO C

108804.02 + 108910.99

novalux
ITALIAN LIGHTING DESIGN SINCE 1948



Features

Use: Indoor
Type of installation: RECESSED INTO PLASTERBOARD
Emission: DIRECT
Optics: MICROPRISMATIZED
Colour: BLACK
Dimming: ON/OFF
Emergency: NO
L: 1120mm
A: 61mm
H: 68mm
Made in: ITALY
Warranty: 5 years
Weight: 2.8kg

Tech data

Luminaire input power: 28.5W
Luminaire luminous flux: 2131lm
IP: 40
Insulation class: I
Supply voltage: 220-240V 50/60Hz
UGR: <19
SELV: Si

Source

Light source: LED
Source power: 24W
Colour temperature: 3000K
CRI: >90
Colour tolerance: 3 Step MacAdam
LED lifespan: 50000h L80 B20

Compliance

CEI EN 60598-1:2021 + A11:2023, CEI EN 60598-2-1:2022, CEI EN 60598-2-2:2012

Standards

Photobiological risk: RISK GROUP 0 Certified fixture in EXEMPT GROUP, in accordance with CEI EN 62471:2010-01, IEC TR 62778:2014.

CAM edilizia: The product complies with the requirements for public buildings, ministerial decree of 23rd June 2022 n.256.

Average luminance

Average luminance limits for DSE workstation 65°(in accordance to EN 12464-1:2012).

[View more product info](#)




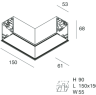
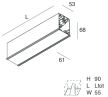
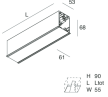
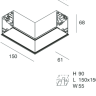
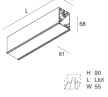
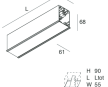
Novalux S.r.l. via Marzabotto, 2 40050 Funo di Argelato (BO) Italy
Tel: +39 051 860558 · Fax +39 051 6647859 · Mail: info@novalux.it · VAT number 00536541204 · novalux.com
Company subject to the management and coordination by SLV GmbH

This technical data sheet is owned by Novalux S.r.l., all rights reserved. Novalux S.r.l. reserves the right to make changes without prior notice.
Last update: 21/3/2024, 17:33:29

HERO C

108804.02 + 108910.99

COMPLETION ACCESSORIES

	HERO C: COPPIA TESTATE NE	108860.02
	HERO C: MOD.CIECO ANG.SX 150 NE	108853.02
	HERO C: MOD.CIECO 1400 NE	108856.02
	HERO C: MOD.CIECO 1680 NE	108857.02
	HERO C: MOD.CIECO ANG.DX 150 NE	108854.02
	HERO C: MOD.CIECO 1120 NE	108855.02
	HERO C: MOD.CIECO 250 NE	108852.02