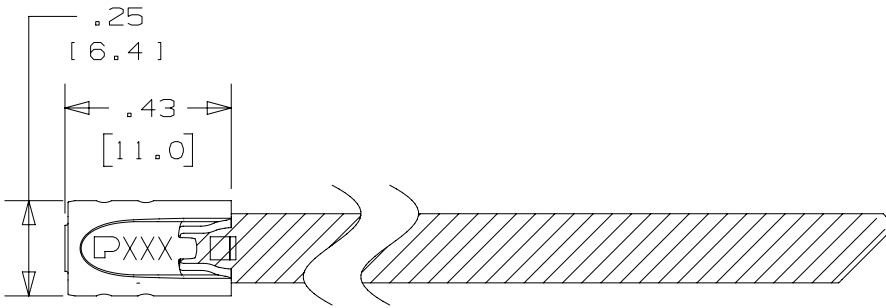
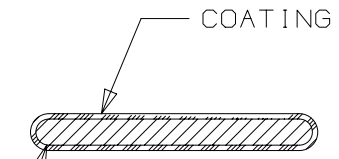
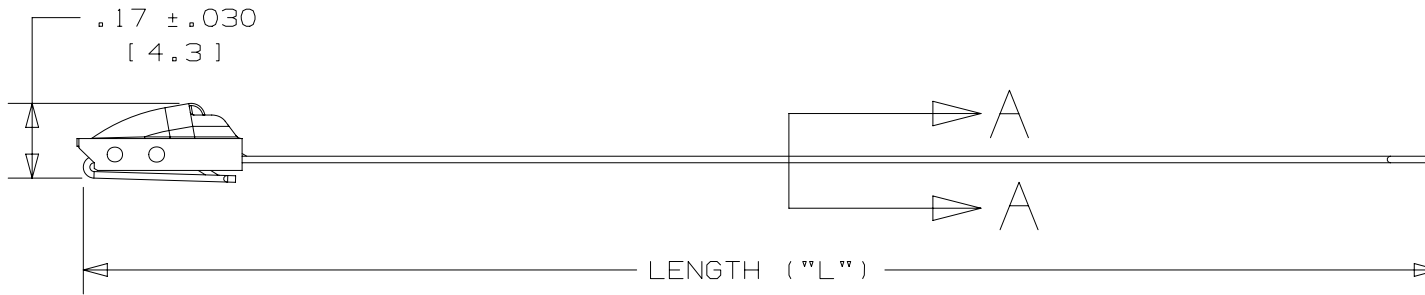


THIS COPY IS PROVIDED ON A RESTRICTED BASIS AND IS NOT TO BE USED IN ANY WAY DETRIMENTAL TO THE INTERESTS OF PANDUIT CORP.



PANDUIT PART NO.	MAX BUNDLE DIAMETER	PACKAGE QTY	LENGTH ('L") +/- .3" [7]
IMLTFC38S-C6L	1.5" [38]	100	6.2" [158]
IMLTFC51S-C6L	2" [51]	100	7.9" [201]
IMLTFC64S-C6L	2.5" [64]	100	9.4" [233]
IMLTFC86S-C6L	3.4" [86]	100	12.2" [310]
IMLTFC102S-C6L	4" [102]	100	14.3" [362]
IMLTFC137S-C6L	5.4" [137]	100	18.2" [462]
IMLTFC152S-C6L	6" [152]	100	20.5" [521]
IMLTFC203S-C6L	8" [203]	100	26.8" [679]



316L STAINLESS STEEL SECTION A - A SCALE 8:1

NOTES:

- 1.) APPLICATION TOOLS - GS4MT, PPTMT, ST2MT, HTMT
- 2.) MINIMUM LOOP TENSILE STRENGTH - 100 LBS. (445 NEWTONS) WHEN TESTED ON A 1.5" MANDREL.
- 3.) BRACKETS [ ] DENOTE DIMENSIONS IN MILLIMETERS, AND ARE SHOWN FOR REFERENCE ONLY
- 4.) TOLERANCES:  
 .XXX = ±.010 [ .25 ]  
 .XX = ±.02 [ .5 ]  
 .X = ±.03 [ .8 ]  
 ANGLES = ±2°
- 5.) MATERIAL: 316L STAINLESS STEEL
- 6.) COATING - EPOXY POLYESTER

TITLE <b>IMLT STANDARD FULLY COATED SINGLE LOOP ASSEMBLY 316L STAINLESS STEEL</b>		<b>PANDUIT</b>
CONTROL DRAWING		
ITEM REVISION NAME 15L355BF/00	MATERIAL: <b>316L STAINLESS STEEL</b>	
DATASET FILE NAME 15L355BF_DC/00		
UNLESS OTHERWISE SPECIFIED, DIMENSIONAL TOLERANCES ARE: IN [mm] .x ± .1 [2.54]      .xxx ± .005 [ .127 ] .xx ± .01 [ .25 ]      ANGLES ± 5 °		DRAWING NUMBER: 15L355BF_DC
THIRD ANGLE PROJECTION		
DRAWN BY JSUN	DATE 3-7-16	CHK JSUN
SCALE 2:1		SHT 1 OF 1
SIZE A		

REV	DATE	BY	CHK	APR	DESCRIPTION	ECN
00	3-7-16	JSUN	SKB	RGRO	INITIAL RELEASE	LPECN.15L355BF_DC/00

D10100DA/16