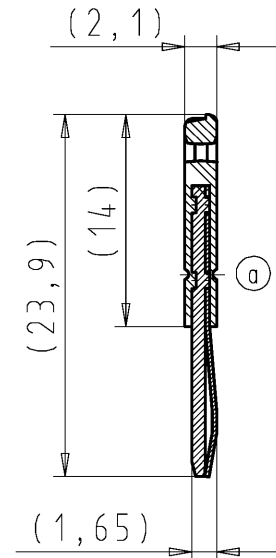
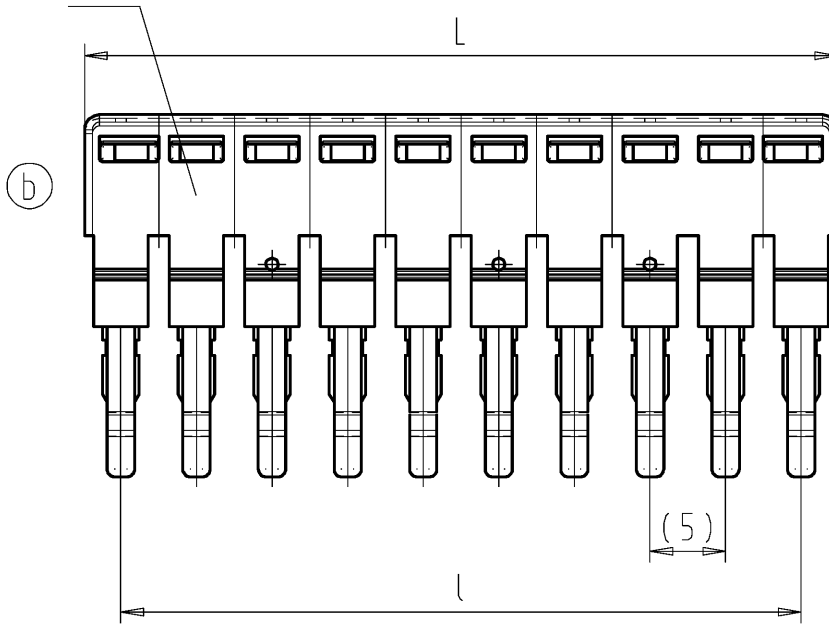


10-polige Ausführung 10 poles variant

PA 66
UL 94 V-2



Weitergabe sowie Vervielfältigung dieses Dokuments, Verwertung und Mitteilung seines Inhalts sind verboten, soweit nicht ausdrücklich gestattet. Die Reproduktion, Distribution und Utilization of this document as well as the communication of its contents to others without express authorization is prohibited.

These dimensions will be especially checked at delivery
Only inspection dimensions
With /E marked dimensions are only valid for internal use

Diese Maße werden bei Abnahme besonders geprüft
Ausschließlich Prüfmaße
Mit /E gekennzeichnete Maße sind nur für interne Zwecke gültig

| Teile-Nr. part nr. | Pol- zahl poles | L-0.2 | l±0,05 | Typ type |
|-----------------------|-----------------------|-------|--------|----------------|
| Z7.280.62MM.0 | 2 | | | IVBWK 2.5 - 2 |
| Z7.280.63MM.0 | 3 | 14.8 | 10 | IVBWK 2.5 - 3 |
| Z7.280.64MM.0 | 4 | 19.8 | 15 | IVBWK 2.5 - 4 |
| Z7.280.65MM.0 | 5 | 24.8 | 20 | IVBWK 2.5 - 5 |
| Z7.280.66MM.0 | 6 | 29.8 | 25 | IVBWK 2.5 - 6 |
| Z7.280.67MM.0 | 7 | 34.8 | 30 | IVBWK 2.5 - 7 |
| Z7.280.68MM.0 | 8 | 39.8 | 35 | IVBWK 2.5 - 8 |
| Z7.280.69MM.0 | 9 | 44.8 | 40 | IVBWK 2.5 - 9 |
| Z7.280.70MM.0 | 10 | 49.8 | 45 | IVBWK 2.5 - 10 |
| Z7.280.71MM.0 | 11 | 54.8 | 50 | IVBWK 2.5 - 11 |
| Z7.280.72MM.0 | 12 | 59.8 | 55 | IVBWK 2.5 - 12 |
| Z7.280.73MM.0 | 13 | 64.8 | 60 | IVBWK 2.5 - 13 |
| Z7.280.74MM.0 | 14 | 69.8 | 65 | IVBWK 2.5 - 14 |
| Z7.280.75MM.0 | 15 | 74.8 | 70 | IVBWK 2.5 - 15 |
| Z7.280.76MM.0 | 16 | 79.8 | 75 | IVBWK 2.5 - 16 |
| Z7.280.77MM.0 | 17 | 84.8 | 80 | IVBWK 2.5 - 17 |
| Z7.280.78MM.0 | 18 | 89.8 | 85 | IVBWK 2.5 - 18 |
| Z7.280.79MM.0 | 19 | 94.8 | 90 | IVBWK 2.5 - 19 |
| Z7.280.80MM.0 | 20 | 99.8 | 95 | IVBWK 2.5 - 20 |

Weitere Daten siehe Katalog
further data see catalog

| | |
|----|---|
| MM | |
| 27 | Katalogteil catalogue part |
| 97 | spezielle Verpackung special packing |

Tolerierung Size ISO 14405 (E) / Tolerance system Size ISO 14405 (E).
{This ISO-standard describes the envelope principle. According to the envelope principle the deviations of form and parallelism are limited by the size tolerances}.

ja/yes Stoffverbots- und Deklarationsliste nach WN 5020.010 ist einzuhalten.
Conformity with Wieland document WN 5020.010 e (list of prohibited / declarable hazardous substances) to be declared!

Freitoleranz nach General tolerance CAD - Zeichnung, keine manuellen Änderungen CAD - drawing, no manual modifications allowed 1.Verwendung: First Use: Blatt: 1 von 1 Sheet: 1 of 1

| | | | | | | |
|---------------------------------|--------------------|---------------------------|----------|----------|---------------------------|-------|
| / | Werkstoff/Material | 2001 | Tag/Date | Name | Zeichnung Nr./Drawing No. | Index |
| / | | gezeichnet drawn | 04.07. | TRESCHAN | | |
| / | Maßstab/Scale | geprüft checked | - | - | Z7.280.6227.0 01K b | b |
| / | 2:1 | Normgepr. Stand. check | - | - | | |
| Maße in mm/Dimensions are in mm | | | | | | |

/ Vol. mm³ OfI./Surf. mm² Ersatz für/Replacement for:

| | | | | |
|-------------------|-------------------------------|---|--------------------|----------------------|
| b | 15.12.2015/ | wieland www.wieland-electric.com | Type | Benennung/Title |
| a | 26.07.2005/ | | Typ | VERBINDUNGSSTECKER |
| Index | Datum / Blatt Date / Sheet | | IVB WK 2,5 - .. | insulated jumper bar |
| Änderung/Revision | | | | |