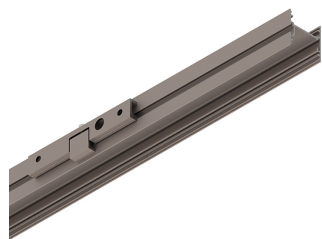


P-30 STRIP LED

105849.21

novalux
ITALIAN LIGHTING DESIGN SINCE 1948



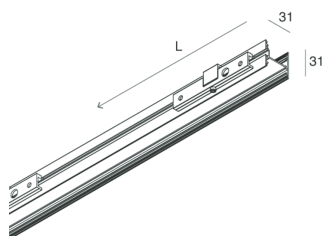
Features

Use: Indoor
Type of installation: WALL
Emission: DIRECT/INDIRECT, DIRECT, INDIRECT
Colour: CAPPUCCINO
L: 800mm
A: 31mm
H: 31mm
Made in: ITALY
Warranty: 5 years

Tech data

IP: 40

[View more product info](#)



Novalux S.r.l. via Marzabotto, 2 40050 Funo di Argelato (BO) Italy
Tel: +39 051 860558 · Fax +39 051 6647859 · Mail: info@novalux.it · VAT number 00536541204 · novalux.com
Company subject to the management and coordination by SLV GmbH

This technical data sheet is owned by Novalux S.r.l., all rights reserved. Novalux S.r.l. reserves the right to make changes without prior notice.

P-30 STRIP LED

105849.21

novalux
ITALIAN LIGHTING DESIGN SINCE 1948

SCREENS



P-30: DIFF. OPALE L=6500

103315.99



P-30: DIFF. ANGOLO L DX+SX 119MM

103330.99



P-30: DIFF. OPALE PER L800

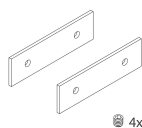
103360.99

COMPLETION ACCESSORIES



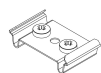
P-30: COPPIA TESTATE STRIP/INCASSO CAPP

103316.21



KIT GIUNZIONE MODULI P-30/LUCKY MINI

103317.99



P-30: KIT MOLLA PER COVER

103326.99



Novalux S.r.l. via Marzabotto, 2 40050 Funo di Argelato (BO) Italy
Tel: +39 051 860558 · Fax +39 051 6647859 · Mail: info@novalux.it · VAT number 00536541204 · novalux.com
Company subject to the management and coordination by SLV GmbH

This technical data sheet is owned by Novalux S.r.l., all rights reserved. Novalux S.r.l. reserves the right to make changes without prior notice.

P-30 STRIP LED

105849.21

novalux

ITALIAN LIGHTING DESIGN SINCE 1948



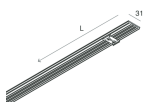
P-30: ANGOLO L PLAFONE-SOSP-PARETE CAPP

103327.21



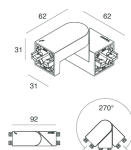
P-30: COVER ANGOLO L CAPP

103329.21



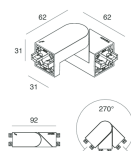
P-30: COVER CON MOLLE CAPP L=800

103363.21



P-30: SNODO 3P PER PCB/STRIP CAPP

105853.21



P-30: SNODO NO CAVI CAPP

105854.21

MOUNTING ACCESSORIES



P-30: AGGANCIO PARETE CAPP

103323.21



Novalux S.r.l. via Marzabotto, 2 40050 Funo di Argelato (BO) Italy
Tel: +39 051 860558 · Fax +39 051 6647859 · Mail: info@novalux.it · VAT number 00536541204 · novalux.com
Company subject to the management and coordination by SLV GmbH

This technical data sheet is owned by Novalux S.r.l., all rights reserved. Novalux S.r.l. reserves the right to make changes without prior notice.