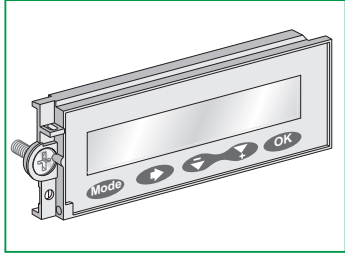


ComPacT NSX100-630
PowerPacT H-J-L

MicroLogic LCD display
Ecran LCD MicroLogic
Pantalla LCD MicroLogic



Schneider
Electric

GHD16347AA-04

PLEASE NOTE

- Electrical equipment should be installed, operated, serviced, and maintained only by qualified personnel.
- No responsibility is assumed by Schneider Electric for any consequences arising out of the use of this material.

REMARQUE IMPORTANTE

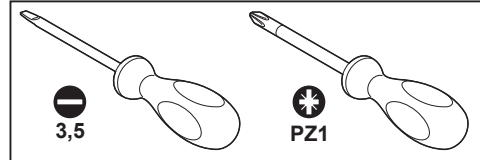
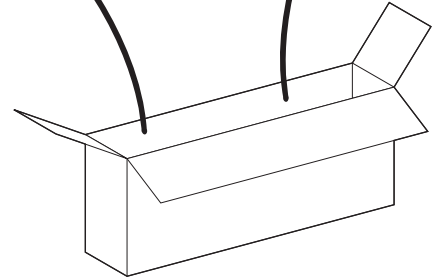
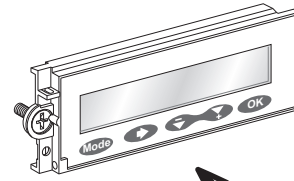
- L'installation, l'utilisation, la réparation et la maintenance des équipements électriques doivent être assurés uniquement par du personnel qualifié.
- Schneider Electric décline toute responsabilité quant aux conséquences de l'utilisation de ce matériel.

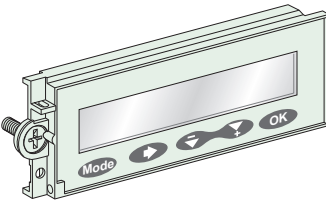
TENGA EN CUENTA

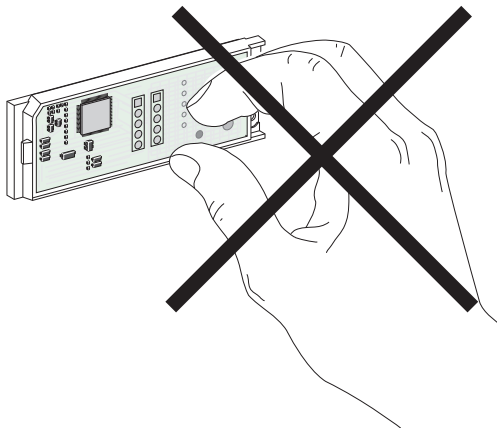

- La instalación, manejo, puesta en servicio y mantenimiento de equipos eléctricos deberán ser realizados sólo por personal cualificado.
- Schneider Electric no se hace responsable de ninguna de las consecuencias del uso de este material.

请注意

- 电气设备的安装、操作、维修和维护工作仅限于合格人员执行。
- Schneider Electric不承担由于使用本资料所引起的任何后果。



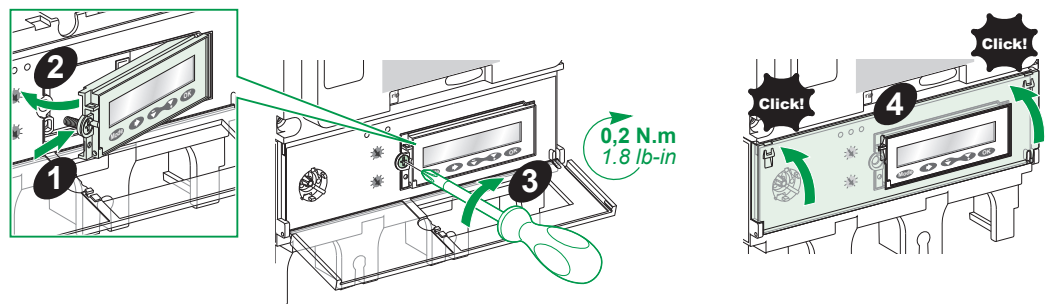
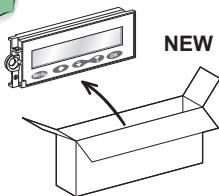
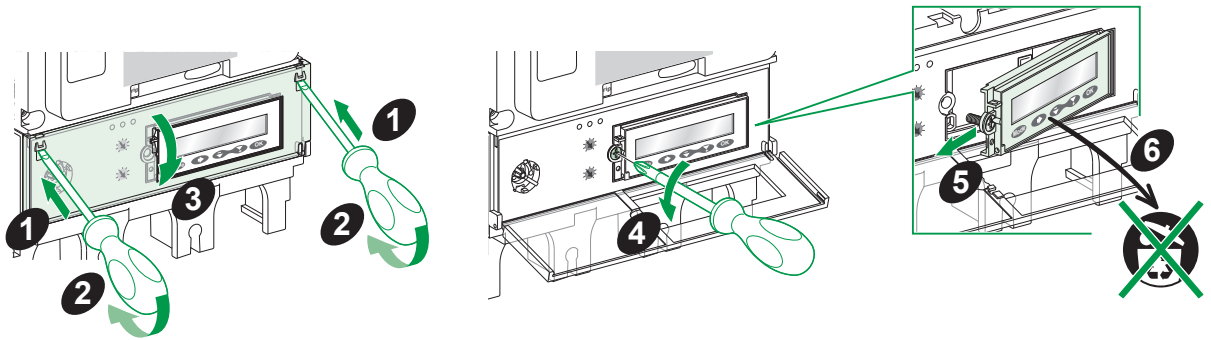
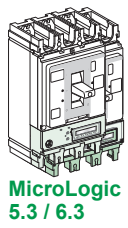
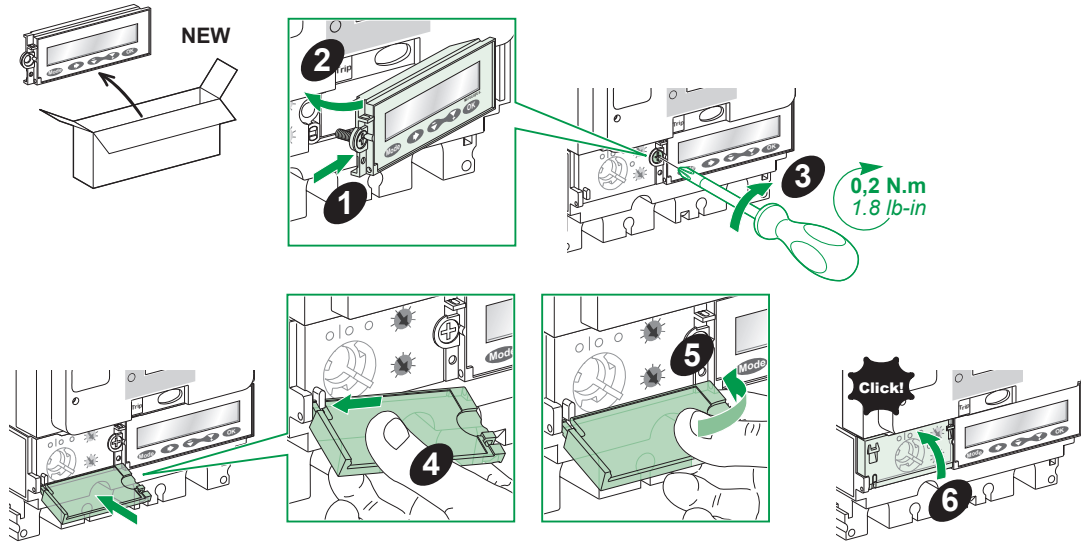
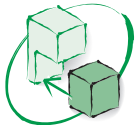
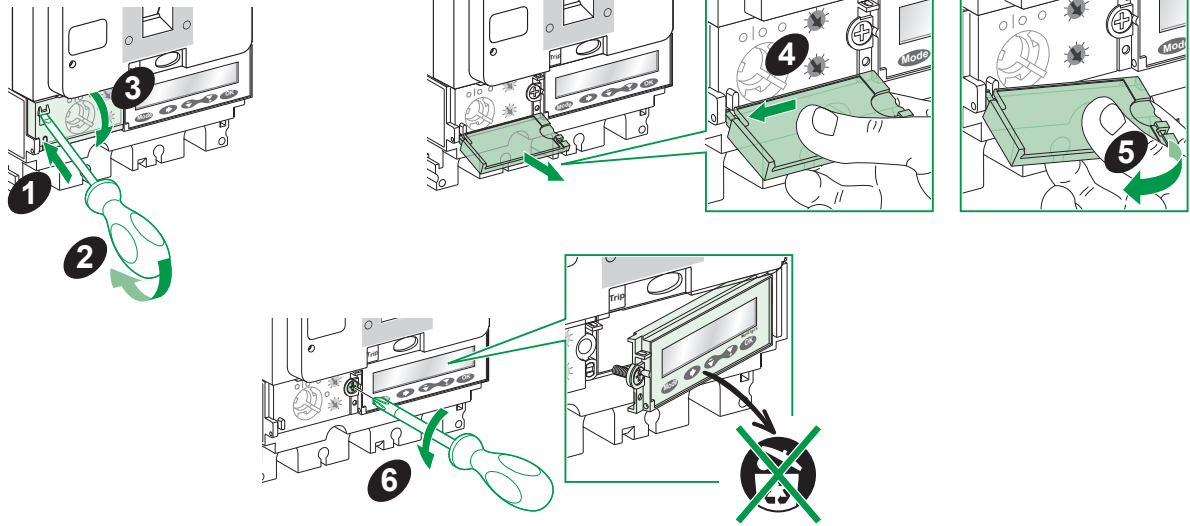
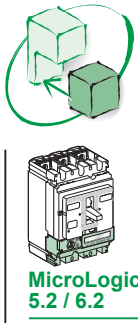
	LV429483	LV429484	LV429486
	MicroLogic 5.2 E 5.2 A 5.3 E 5.3 A	MicroLogic 6.2 E 6.2 A 6.3 E 6.3 A	MicroLogic 6.2 E-M 6.3 E-M

ATTENTION
OBSERVE PRECAUTIONS
FOR HANDLING
ELECTROSTATIC
DISCHARGE
SENSITIVE
DEVICES



ATTENTION
RESPECTER LES PRÉCAUTIONS
DE MANIPULATION
DES DISPOSITIFS
SENSIBLES AUX CHARGES
ELECTROSTATIQUES



Schneider Electric Industries SAS
35 rue Joseph Monier
CS 30323
F - 92506 Reuil Malmaison Cedex
www.se.com



Schneider Electric Limited
Stafford Park 5
Telford, TF3 3BL
United Kingdom
www.se.com/uk

