



DT20-P244B

DT20 Hi

DISPLACEMENT MEASUREMENT SENSORS

SICK
Sensor Intelligence.



Ordering information

Type	Part no.
DT20-P244B	1040406

Other models and accessories → www.sick.com/DT20_Hi



Detailed technical data

Mechanics/electronics

Supply voltage V_s	DC 10 V ... 30 V ¹⁾
Ripple	$\leq 5 V_{pp}$ ²⁾
Power consumption	$\leq 1.8 W$ ³⁾
Warm-up time	≤ 10 min
Housing material	Metal (zinc diecast)
Window material	Plastic (PMMA)
Connection type	Male connector, M12, 5-pin, swivel connector unit
Indication	LC display, 2 x LED
Weight	135 g
Dimensions (W x H x D)	24.3 mm x 72.4 mm x 54.1 mm
Enclosure rating	IP65 (EN 60529)
Protection class	II

¹⁾ Limit values, reverse-polarity protected, operation in short-circuit protected network: max. 8 A.

²⁾ May not fall short of or exceed V_s tolerances.

³⁾ Without load.

Safety-related parameters

MTTF_D	101 years
DC_{avg}	0%

Performance

Measurement range min ... max:	100 mm ... 300 mm ¹⁾
Target	Natural objects
Repeatability	≥ 0.25 mm ^{1) 2) 3)}

¹⁾ 6% ... 90% remission factor.

²⁾ Dependent on the set average or sensitivity.

³⁾ When calibrated in the application regularly.

⁴⁾ 90% remission factor.

Linearity	$\pm 1 \text{ mm}^{3) 4)}$
Response time	$\geq 2.5 \text{ ms}^{2)}$
Measuring frequency	$\leq 400 \text{ Hz}^{1)}$
Output time	$\geq 2.5 \text{ ms}$
Light source	Laser, red visible red light
Laser class	2 (IEC 60825-1:2014, EN 60825-1:2014)
Typ. light spot size (distance)	3 mm x 6 mm (300 mm)
Additional function	Set moving average fast/medium/slow, switching mode: distance to object (DtO), teach-in of digital output, invertable digital output, teach-in of analog output, Invertable analog output, Multifunctional input: laser off / external teach-in / deactivated, switch-off display, lock user interface

1) 6% ... 90% remission factor.

2) Dependent on the set average or sensitivity.

3) When calibrated in the application regularly.

4) 90% remission factor.

Interfaces

Digital output	Number	1 ¹⁾
	Type	PNP
	Maximum output current I_A	$\leq 100 \text{ mA}$
Analog output	Number	1
	Type	Current output
	Current	4 mA ... 20 mA, $\leq 300 \Omega$
	Resolution	12 bit
Multifunctional input (MF)		1 x MF ²⁾

1) PNP: HIGH = $V_S - (< 2 \text{ V})$ / LOW = $< 2 \text{ V}$; NPN: HIGH = $< 2 \text{ V}$ / LOW = V_S .

2) MF can be used as laser-off, external teach-in or deactivated.

Ambient data

Ambient temperature, operation	$-20 \text{ }^\circ\text{C} \dots +55 \text{ }^\circ\text{C}$, Operating temperature at $V_S = 24 \text{ V}$
Ambient temperature, storage	$-20 \text{ }^\circ\text{C} \dots +60 \text{ }^\circ\text{C}$
Temperature drift	$0.25 \text{ mm/K}^{1)}$
Typ. Ambient light immunity	Artificial light: $\leq 3,000 \text{ lx}$ Sunlight: $\leq 10,000 \text{ lx}$
Vibration resistance	EN 60068-2-6, EN 60068-2-64
Shock resistance	EN 60068-2-27

1) 0.5 mm/K : for distances $> 600 \text{ mm}$.

Classifications

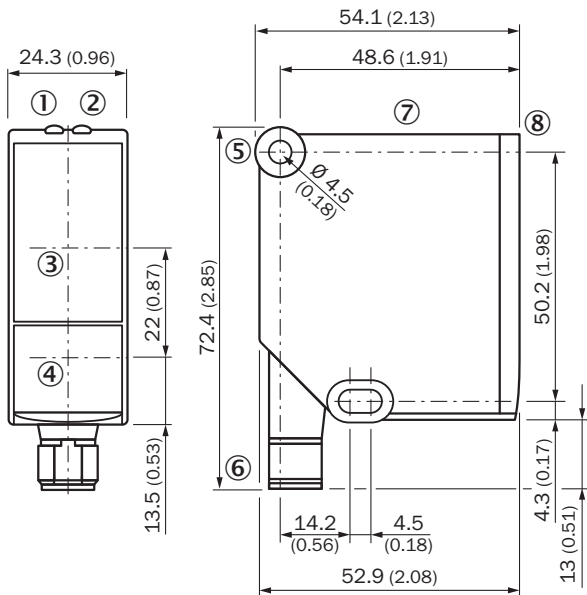
eCl@ss 5.0	27270801
eCl@ss 5.1.4	27270801
eCl@ss 6.0	27270801
eCl@ss 6.2	27270801

DT20-P244B | DT20 Hi

DISPLACEMENT MEASUREMENT SENSORS

eCl@ss 7.0	27270801
eCl@ss 8.0	27270801
eCl@ss 8.1	27270801
eCl@ss 9.0	27270801
eCl@ss 10.0	27270801
eCl@ss 11.0	27270801
eCl@ss 12.0	27270916
ETIM 5.0	EC001825
ETIM 6.0	EC001825
ETIM 7.0	EC001825
ETIM 8.0	EC001825
UNSPSC 16.0901	41111613

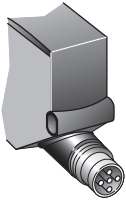
Dimensional drawing (Dimensions in mm (inch))



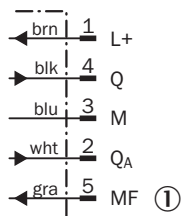
- ① Status display for supply voltage active (green)
- ② Status indicator digital output (orange)
- ③ Optical axis, receiver
- ④ Optical axis, sender
- ⑤ Fixing hole
- ⑥ Connector M12, 5-pin, turnable
- ⑦ Control elements and display
- ⑧ Reference surface = 0 mm

Connection type

Male connector M12, 5-pin

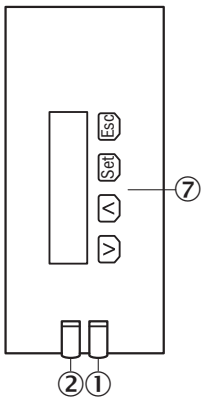


Connection diagram



① Multifunctional input (MF)



Adjustment possible



- ① Status display for supply voltage active (green)
- ② Status indicator digital output (orange)
- ⑦ Control elements and display

Recommended accessories

Other models and accessories → www.sick.com/DT20_Hi

	Brief description	Type	Part no.
Mounting brackets and plates			
	Mounting bracket, stainless steel, without mounting material, for DT20 Hi, without mounting hardware	BEF-WN-DT20	4043524
Plug connectors and cables			
	Head A: female connector, M12, 5-pin, straight, A-coded Head B: Flying leads Cable: Sensor/actuator cable, PVC, unshielded, 2 m	YF2A15-020VB5XLEAX	2096239

Recommended services

Additional services → www.sick.com/DT20_Hi

	Type	Part no.
Commissioning		
<ul style="list-style-type: none"> • Product area: Displacement measurement sensors • Range of services: Inspection of connection and mounting, optimization of parameters of SICK product as well as tests, set-up of previously defined functions of the scaling of the analog measuring range, switching point position, hysteresis, measuring frequency, measured value filter, signal quality, evaluation function, or communication interface • Travel expenses: The prices do not include travel costs such as hotel, flight, travel time and expenses. • Duration: Additional work will be invoiced separately 	DT20 Hi/OD/OL commissioning	1612241
Extended warranty		
<ul style="list-style-type: none"> • Product area: Identification solutions, machine vision, Distance sensors, Detection and ranging solutions • Range of services: The services correspond to the scope of the statutory manufacturer warranty (SICK general terms of delivery). • Duration: Five-year warranty from delivery date. 	Extended warranty for a total of five years from delivery date	1680671

SICK AT A GLANCE

SICK is one of the leading manufacturers of intelligent sensors and sensor solutions for industrial applications. A unique range of products and services creates the perfect basis for controlling processes securely and efficiently, protecting individuals from accidents and preventing damage to the environment.

We have extensive experience in a wide range of industries and understand their processes and requirements. With intelligent sensors, we can deliver exactly what our customers need. In application centers in Europe, Asia and North America, system solutions are tested and optimized in accordance with customer specifications. All this makes us a reliable supplier and development partner.

Comprehensive services complete our offering: SICK LifeTime Services provide support throughout the machine life cycle and ensure safety and productivity.

For us, that is “Sensor Intelligence.”

WORLDWIDE PRESENCE:

Contacts and other locations –www.sick.com