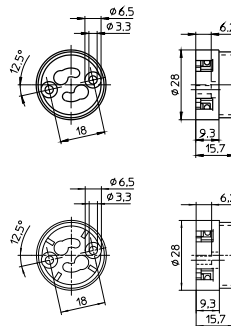


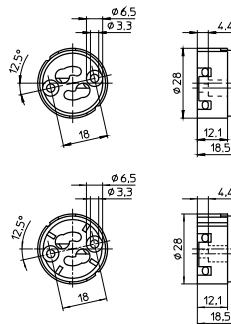
GU10, GZ10 Lampholders, Accessories

For mains voltage halogen incandescent lamps

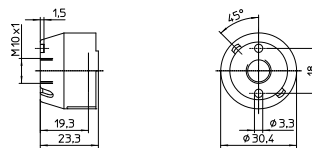
GU10, GZ10 lampholders
 Casing: LCP, black, T270, nominal rating: 2/250
 Push-in twin terminals for stranded conductors
 with ferrule on bare end of core \varnothing 1.4–1.8 mm
 Fixing holes for screws M3
 Weight: 7 g, unit: 1000 pcs.
 Type: 31000/31010
Ref. No.: 108979 GU10, GZ10 lampholder
Ref. No.: 109007 GU10 lampholder



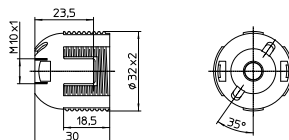
GU10, GZ10 lampholders
 For luminaires of protection class II
 Casing: LCP, black, T270, nominal rating: 2/250
 Push-in twin terminals for stranded conductors
 with ferrule on bare end of core \varnothing 1.4–1.8 mm
 Fixing holes for screws M3
 Weight: 8 g, unit: 1000 pcs.
 Type: 31020/31030
Ref. No.: 502111 GU10, GZ10 lampholder
Ref. No.: 502112 GU10 lampholder



Cover cap for GU10, GZ10 lampholders type 310
 Material: PA GF, black
 Moulded thread: M10x1
 Fixing holes for screws M3
 Weight: 3.4 g, unit: 1000 pcs.
 Type: 97244
Ref. No.: 109411



Cover cap for lampholders 502111/502112
 External thread 32x2
 Material: LCP
 Moulded thread: M10x1
 Weight: 6 g, unit: 1000 pcs.
 Type: 97320
Ref. No.: 502064



1

2

3

4

5

6

7

8

9

10