

Part number

AW M25PJ



Complete cable gland, M25



Product description

Product type	Complete cable gland
Cable entry	M25
Specification	For diameter 9-17 mm

Further technical details

Weight	59,50 g
---------------	---------

General ordering information

EAN13 code	8015747264464
eCl@ss 8.1	27149109
ETIM 7.0	EC000441

Packaging Information

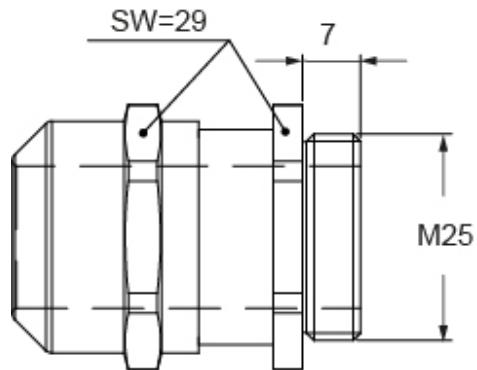
Sub-packaging weight	2,98 kg
Sub-packaging description	Plastic packaging
Sub-packaging quantity	50 Pcs
Sub-packaging EAN barcode	8015747264518

Part number

AW M25PJ



Catalogue drawings



Notes

Dimensions shown in mm are not binding and may be changed without notice.
