



Plug



Coupler



Flange socket



Wall socket

Technical data

Ex-plugs and receptacles acc. to IEC 60309-1/2

Marking accd. to 2014/34/EU	⊕ II 3 G Ex nC IIC T6
EC-Type Examination Certificate	PTB 99 ATEX 1115
Permissible ambient temperature	-20 °C to +40 °C ¹⁾
Rated voltage	690 V (AC)
Rated current	up to 32 A
Frequency	up to 400 Hz
Rated making / Rated breaking capacity AC-3 accd. EN 60947-3	U_e 690 V / I_e 32 A
External back up fuse	without therm. protection: 35 A with therm. protection: 50 A gG (rated current 32 A set to)
Protection class	I
Degree of protection accd. to EN 60529	IP66
Enclosure colour	black

Wall socket

Cable entry/enclosure drilling	1 x M40 cable gland, 1 x M40 plastic Ex-screw plug or 2 x M32 metal thread with 2 plastic Ex-screw plug
Connecting terminals	2 x 4 - 10 mm ²
Enclosure material	glass-fibre reinforced polyester

Plug

Cable entry	Ø 12 - 28 mm
Connecting terminals	1 x 1.0 - 6 mm ²
Enclosure material	Polyamide

Coupler

Cable entry	Ø 12 - 28 mm
Connecting terminals	2 x 4 - 10 mm ²
Enclosure material	Polyamide

Flange socket

Connecting terminals	2 x 4 - 10 mm ²
Enclosure material	Polyamide

¹⁾ extended temperature range on request

Details for used cable glands see pages 2.3.ff

Ex-plugs and receptacles zone 2: 32 A 3/4/5-pole up to 690 V



Wall socket



Flange socket



Coupler



Plug

Ordering details

Voltage	h	Type	Cable entry	Weight approx.	Order No.
Type 32 A 4-pole					
200-250 V		Wall socket	KU	1.8 kg	GHG 517 4409 R0001
		Wall socket	ME	1.9 kg	GHG 517 4409 R3001
		Flange socket		1.0 kg	GHG 517 8409 R0001
		Coupler		1.7 kg	GHG 517 3409 R0001
		Plug		0.7 kg	GHG 517 7409 R0001
380-415 V		Wall socket	KU	1.8 kg	GHG 517 4406 R0001
		Wall socket	ME	1.9 kg	GHG 517 4406 R3001
		Flange socket		1.0 kg	GHG 517 8406 R0001
		Coupler		1.7 kg	GHG 517 3406 R0001
		Plug		0.7 kg	GHG 517 7406 R0001
480-500 V		Wall socket	KU	1.8 kg	GHG 517 4407 R0001
		Wall socket	ME	1.9 kg	GHG 517 4407 R3001
		Flange socket		1.0 kg	GHG 517 8407 R0001
		Coupler		1.7 kg	GHG 517 3407 R0001
		Plug		0.7 kg	GHG 517 7407 R0001
600-690 V		Wall socket	KU	1.8 kg	GHG 517 4405 R0001
		Wall socket	ME	1.9 kg	GHG 517 4405 R3001
		Flange socket		1.0 kg	GHG 517 8405 R0001
		Coupler		1.7 kg	GHG 517 3405 R0001
		Plug		0.7 kg	GHG 517 7405 R0001
Type 32 A 5-pole					
200-250 V 380-415 V		Wall socket	KU	1.8 kg	GHG 517 4506 R0001
		Wall socket	ME	1.9 kg	GHG 517 4506 R3001
		Flange socket		1.0 kg	GHG 517 8506 R0001
		Coupler		1.7 kg	GHG 517 3506 R0001
		Plug		0.7 kg	GHG 517 7506 R0001

other voltage ranges and versions, e.g. with aux. contact, on request

KU = 1 x plastic cable glands M40 cable gland, 1 x M40 plastic Ex-screw plug

ME = 2 x metal thread M32 with plastic Ex-screw plug



Plug



Coupler

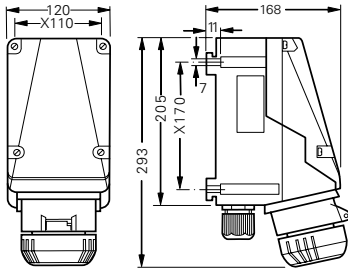


Flange socket

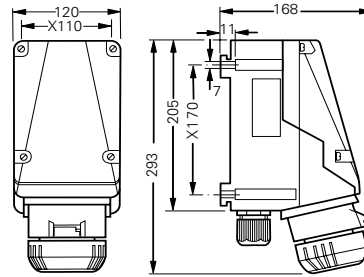


Wall socket

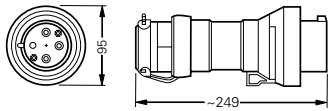
Dimension drawing | Wiring diagram



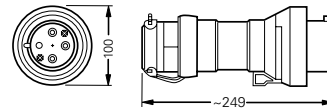
Wall socket 4-pole



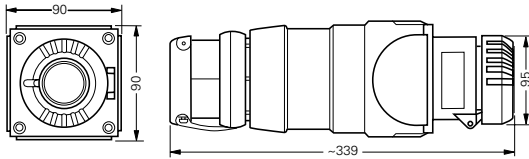
Wall socket 5-pole



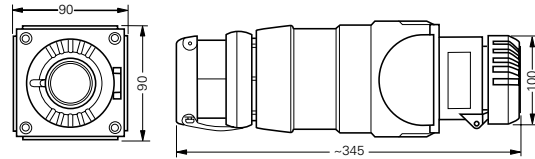
Plug 4-pole



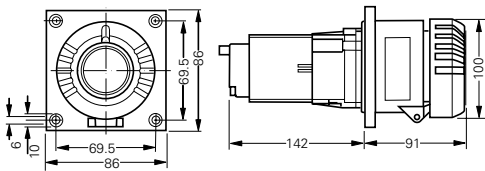
Plug 5-pole



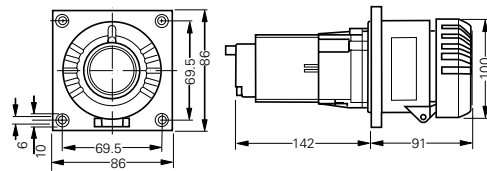
Coupler 4-pole



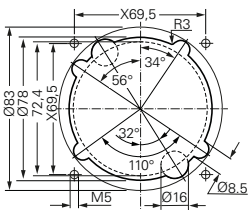
Coupler 5-pole



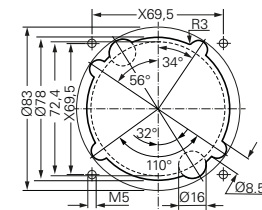
Flange socket 4-pole



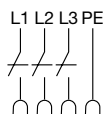
Flange socket 5-pole



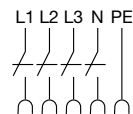
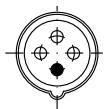
Assembly dimensions flange socket



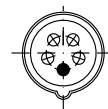
Assembly dimensions flange socket X = fixing dimensions



3P + PE



3P + N + PE



Accessories for Ex-plugs and receptacles 32 A zone 2



Mounting plate



Plug cap

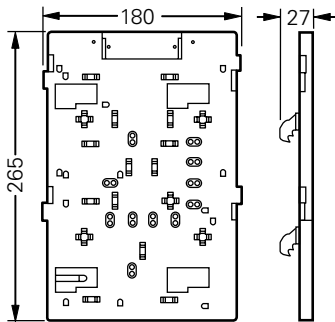


Protective canopy

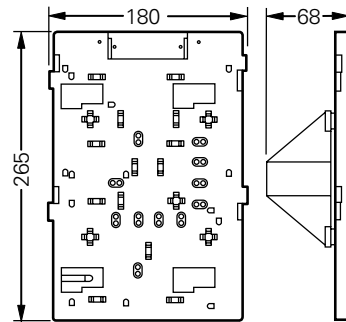
Accessories

Type	Application	Fixing method	Order No.
Mounting plates for wall sockets 32 A			
Size 5	for wall mounting	snap on	GHG 610 1953 R0128
Size 5	for trellis mounting	snap on	GHG 610 1953 R0128
Size 5	for pipe clamp	snap on	GHG 610 1953 R0132
Type			Order No.
Plug cap for plugs 32 A			
Plug 32 A 3-pole/4-pole			GHG 510 1901 R0004
Plug 32 A 5-pole			GHG 510 1901 R0005
Type		OU	Order No.
Accessories for mounting plates			
Mounting set for pipes 1" (Ø 27 - 30 mm) for mounting plates with pipe fixing		10	GHG 610 1953 R0020
Please pay attention that only order units (OU) according to the ordering details can be delivered.			
Type		Application	Order No.
Protective canopy for mounting plate			
Size 5	for mounting plate size 5, snap on		GHG 610 1955 R0108

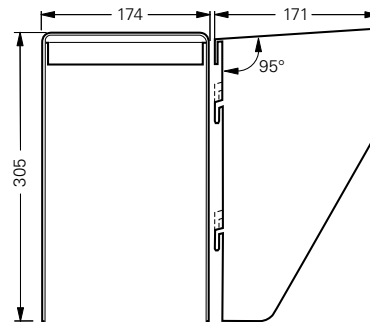
Dimension drawing



Mounting plate size 5
for wall/trellis mounting



Mounting plate size 5
for pipe mounting



Protective canopy size 5