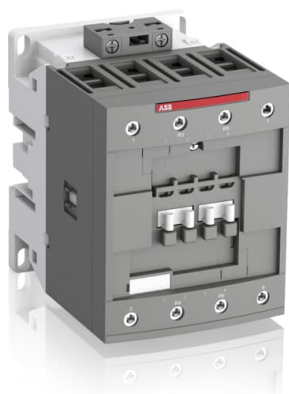


PRODUCT-DETAILS

AF80-22-00-11

AF80-22-00-11 24-60V50/60HZ 20-60VDC

Contacteur



Informations générales

| | |
|------------------------------|--|
| Extension du type de produit | AF80-22-00-11 |
| Code de produit | 1SBL397501R1100 |
| EAN | 3471523133914 |
| Description courte | AF80-22-00-11 24-60V50/60HZ 20-60VDC Contactor |
| Description longue | <p>The AF80-22-00-11 is a 4 pole - 1000 V IEC or 600 UL contactor with screw terminals, controlling motors up to 37 kW / 400 V AC (AC-3) and switching power circuits up to 125 A (AC-1) or 105 A UL general use. Thanks to the AF technology, the contactor has a wide control voltage range (24-60 V 50/60 Hz and 20-60 V DC), managing large control voltage variations, reducing panel energy consumptions and ensuring distinct operations in unstable networks. Furthermore, surge protection is built-in, offering a compact solution. AF contactors have a block type design, can be easily extended with add-on auxiliary contact blocks and an additional wide range of accessories.</p> |

Commande

| | |
|------------------|----------|
| Quantité minimum | 1 pièce |
| Code douanier | 85364900 |

Downloads Préférés

| | |
|-------------------------|-----------------|
| Instructions et manuels | 1SBC101047M6801 |
|-------------------------|-----------------|

CAD Dimensional
Drawing

2CDC001079B0201

Dimensions

| | |
|----------------------|----------|
| Produit Largeur Net | 90 mm |
| Produit Longueur Net | 116 mm |
| Produit Hauteur Net | 125.5 mm |
| Poids net | 1.49 kg |

Technique

| | |
|--|---|
| Number of Main Contacts NO | 2 |
| Number of Main Contacts NC | 2 |
| Number of Auxiliary Contacts NO | 0 |
| Number of Auxiliary Contacts NC | 0 |
| Normes et standards | IEC/EN 60947-1, IEC/EN 60947-4-1, UL 60947-1, UL 60947-4-1, CSA C22.2 No. 60947-1:22, CSA C22.2 No. 60947-4-1:22 |
| Tension | Circuit principal 1000 V |
| Fréquence assignée (f) | Circuit de commande 50 / 60 Hz Circuit principal 50 / 60 Hz |
| Courant thermique conventionnel à l'air libre (I_{th}) | acc. to IEC 60947-4-1, Open Contactors $\Theta = 40\text{ °C}$ 125 A |
| Courant assignée d' emploi AC-1 (I_e) | (690 V) 40 °C 125 A (690 V) 60 °C 105 A (690 V) 70 °C 90 A |
| Courant assignée d' emploi AC-3 (I_e) | (415 V) 60 °C 80 A (440 V) 60 °C 80 A (500 V) 60 °C 65 A (690 V) 60 °C 49 A (1000 V) 60 °C 25 A (380 / 400 V) 60 °C 80 A (220 / 230 / 240 V) 60 °C 80 A |
| Puissance assignée d' emploi AC-3 (P_e) | (415 V) 45 kW (440 V) 45 kW (500 V) 45 kW (690 V) 45 kW (1000 V) 35 kW (380 / 400 V) 37 kW (220 / 230 / 240 V) 22 kW |
| Courant assigné de courte durée admissible (I_{cw}) | at 40 °C Ambient Temp, in Free Air, from a Cold State 10 s 780 A at 40 °C Ambient Temp, in Free Air, from a Cold State 15 min 140 A at 40 °C Ambient Temp, in Free Air, from a Cold State 1 min 300 A at 40 °C Ambient Temp, in Free Air, from a Cold State 1 s 1200 A at 40 °C Ambient Temp, in Free Air, from a Cold State 30 s 450 A |
| Maximum Breaking Capacity | cos phi=0.45 (cos phi=0.35 for $I_e > 100\text{ A}$) at 440 V 1150 A cos phi=0.45 (cos phi=0.35 for $I_e > 100\text{ A}$) at 690 V 750 A |
| Maximum Electrical Switching Frequency | (AC-1) 600 cycles per hour |
| Tension assignée d' isolement (U_i) | acc. to IEC 60947-4-1 1000 V acc. to UL/CSA 600 V |

| | |
|---|--|
| Tension assignée de tenue aux chocs (U_{imp}) | 8 kV |
| Maximum Mechanical Switching Frequency | 3600 cycles per hour |
| Rated Control Circuit Voltage (U_c) | 50 Hz 24 ... 60 V 60 Hz 24 ... 60 V DC Operation 20 ... 60 V |
| Coil Consumption | Average Holding Value 50 / 60 Hz 4 V·A Average Holding Value 50 Hz 4 V·A Average Holding Value 60 Hz 4 V·A Average Holding Value DC 2 W Average Holding Value, from Warm State 2 W |
| Montage sur rail DIN | TH35-15 (35 x 15 mm Mounting Rail) acc. to IEC 60715 |
| Mounting by Screws (not supplied) | 2 x M4 or 2 x M6 screws placed diagonally |
| Connecting Capacity Main Circuit | Flexible with Ferrule 1/2x 6 ... 50 mm ² Flexible with Insulated Ferrule 1/2x 6 ... 50 mm ² Rigid Stranded 1x 6 ... 70 mm ² Rigid Stranded 2x 6 ... 50 mm ² |
| Connecting Capacity Control Circuit | Flexible with Ferrule 1/2x 0.75 ... 2.5 mm ² Flexible with Insulated Ferrule 1x 0.75 ... 2.5 mm ² Flexible with Insulated Ferrule 2x 0.75 ... 1.5 mm ² Rigid Solid 1/2x 1 ... 2.5 mm ² Rigid Stranded 1/2x 1 ... 2.5 mm ² |
| Wire Stripping Length | Control Circuit 10 mm Main Circuit 17 mm |
| Indice de protection | acc. to IEC 60529, IEC 60947-1, EN 60529 Coil Terminals IP20 acc. to IEC 60529, IEC 60947-1, EN 60529 Main Terminals IP10 |
| Type de borne | Screw Terminals |

Technique UL/CSA

| | |
|--|---|
| Maximum Operating Voltage UL/CSA | Circuit principal 600 V |
| General Use Rating UL/CSA | (600 V AC) 105 A |
| Connecting Capacity Main Circuit UL/CSA | Rigid Stranded 1/2x 6-1 AWG |
| Connecting Capacity Control Circuit UL/CSA | Rigid Solid 1/2x 18-14 AWG Rigid Stranded 1/2x 18-14 AWG |
| Tightening Torque UL/CSA | Control Circuit 11 in·lb Main Circuit 53 in·lb |

Environnement

| | |
|--|---|
| Température de l'air ambiant | Close to Contactor for Storage -60 ... +80 °C Near Contactor for Operation in Free Air -40 ... 70 °C |
| Climatic Withstand | Category B according to IEC 60947-1 Annex Q |
| Altitude de fonctionnement maximale autorisée | Without Derating 3000 m |
| REACH Declaration | 2CMT2021-006202 |
| Resistance to Vibrations acc. to IEC 60068-2-6 | 5 ... 300 Hz 3 g Closed position / 2 g Open position |
| Informations RoHS | 2CMT2021-006277 |

Statut RoHS

Following EU Directive 2011/65/EU

Certificats et Déclarations (Numéro de document)

| | |
|-------------------------------------|--|
| Certificat ABS | ABS_20-2060694-PDA |
| Certificat BV | BV_2634H36994B1 |
| CB Certificate | CB_SE-96557M3 |
| CCC Certificate | CCC_2013010304646569 |
| CQC Certificate | CQC2013010304646569 |
| Declaration of Conformity - CCC | 2020980304001255 |
| Déclaration de Conformité - CE | 1SBD250001U1000 |
| Declaration of Conformity - UKCA | 1SBD250032U1000 |
| Certificat DNV | DNV_TAE00001AF-4 |
| EAC Certificate | EAC_RU_FRME77B03447 |
| KC Certificate | KC_HW02016-15013C |
| Certificat UL | UL-US-L312527-1142-02114102-6 UL-CA-L312527-4142-02114102-6 |
| UL Listing Card | UL_E312527 |

Emballage

| | |
|--------------------------------|---------------|
| Emballage Niveau 1 Unités | box 1 pièce |
| Emballage Niveau 1 Largeur | 150 mm |
| Emballage Niveau 1 Longueur | 150 mm |
| Emballage Niveau 1 Hauteur | 103 mm |
| Emballage Niveau 1 Poids | 1.62 kg |
| Emballage Niveau 1 EAN | 3471523133914 |
| Emballage Niveau 2 Unités | box 8 pièce |
| Emballage Niveau 2 Largeur | 250 mm |
| Emballage Niveau 2 Longueur | 300 mm |
| Emballage Niveau 2 Hauteur | 300 mm |
| Emballage Niveau 2 Poids | 12.96 kg |
| Emballage Niveau 3 Unités | 192 pièce |

Classifications

| | |
|-----------------------------------|---|
| Code de classification d'objet | Q |
|-----------------------------------|---|

| | |
|---|---|
| ETIM 4 | EC000066 - Magnet contactor, AC-switching |
| ETIM 5 | EC000066 - Magnet contactor, AC-switching |
| ETIM 6 | EC000066 - contacteur de puissance pour commutation de courant alternatif |
| ETIM 7 | EC000066 - Power contactor, AC switching |
| ETIM 8 | EC000066 - Power contactor, AC switching |
| eClass | V11.0 : 27371003 |
| UNSPSC | 39121529 |
| Code de catégorie granulaire IDEA (IGCC) | 4758 >> Iec Contactors |
| E-Number (Finland) | 3707448 |
| E-Number (Sweden) | 3210350 |

