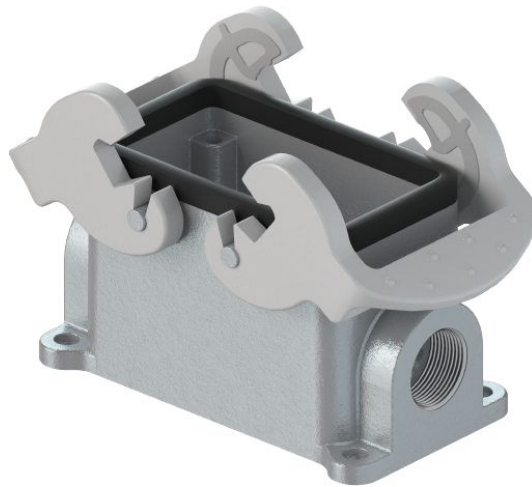


Fiche produit

Article n° 70.330.1035.1

Bas BAS GUT GB 10 M20 A1



Article n°	70.330.1035.1
EAN	4015573599512
Unité de commande	1 Piece(s)

certificats/approbations



Données techniques

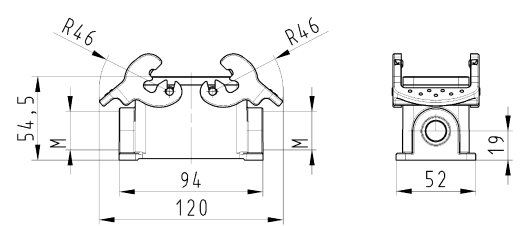

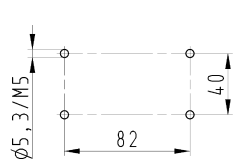
**général**

matière du boîtier	aluminium
Couleur	gris
Surface	Avec revêtement en poudre
Degré de protection (IP)	Autre
Résistant aux UV	Oui
classe d'inflammabilité des matériaux d'isolation selon la norme UL94	Autre
Température de fonctionnement min.	-40 °C
Portée max de température.	120 °C

**Model**

DIN-taille	10
Model	Surface de montage (base)
Mecanisme de verrouillage	Double levier de verrouillage
entrée de câble	double face
Type de câble	fil
Avec presse-étoupe	Aucun
Taille du filetage M	20
Taille du filetage PG	
Le couvercle à charnière	Aucun
EMC-version	Aucun
Longueur	94 mm
largeur	52 mm
hauteur	55 mm

**Dessin technique**

<p>These dimensions will be reported, rounded off, on parts of which no dimensions are given.</p> <p>These dimensions will be reported, rounded off, on parts of which no dimensions are given.</p> <p>These dimensions will be reported, rounded off, on parts of which no dimensions are given.</p>		<p>These dimensions will be reported, rounded off, on parts of which no dimensions are given.</p> <p>These dimensions will be reported, rounded off, on parts of which no dimensions are given.</p> <p>These dimensions will be reported, rounded off, on parts of which no dimensions are given.</p>																												
<b>Varianten/Variants</b> .0 																														
<b>Weitere Daten siehe KATALOG oder eCatalog. www.wieland-electric.com</b> <b>Additional data see CATALOG or eCatalog. eshop.wieland-electric.com</b>																														
<table border="1" style="width:100%; border-collapse: collapse;"> <tr> <td style="width:15%;">70.330.1035.1</td> <td style="width:15%;">BAS GUT GB 10</td> <td style="width:10%;">M25 M20</td> <td style="width:10%;">A 1</td> <td style="width:50%;">Gewindebohrung /Thread hole</td> <td style="width:10%; text-align: center;">X</td> </tr> <tr> <td>70.330.1035.0</td> <td>BAS GUT GB 10</td> <td>M25 M20</td> <td>A 0</td> <td>Kabelverschraubung/KVI, IP54 montiert /Cable gland/CG, IP54 assembled</td> <td></td> </tr> <tr> <td>Bestellnummer /Order number</td> <td>Typ /Type</td> <td colspan="2">Varianten /Variants</td> <td>Art part no.</td> <td>index</td> </tr> </table>			70.330.1035.1	BAS GUT GB 10	M25 M20	A 1	Gewindebohrung /Thread hole	X	70.330.1035.0	BAS GUT GB 10	M25 M20	A 0	Kabelverschraubung/KVI, IP54 montiert /Cable gland/CG, IP54 assembled		Bestellnummer /Order number	Typ /Type	Varianten /Variants		Art part no.	index										
70.330.1035.1	BAS GUT GB 10	M25 M20	A 1	Gewindebohrung /Thread hole	X																									
70.330.1035.0	BAS GUT GB 10	M25 M20	A 0	Kabelverschraubung/KVI, IP54 montiert /Cable gland/CG, IP54 assembled																										
Bestellnummer /Order number	Typ /Type	Varianten /Variants		Art part no.	index																									
<b>Bohrbild /Cut out</b> 																														
<table border="1" style="width:100%; border-collapse: collapse;"> <tr> <td style="width:10%; text-align: center;">1:2</td> <td style="width:30%;"> <b>Material/Material</b>                  Aluminium                  beschichtet/coated                  anodisiert                  anodized             </td> <td style="width:10%;">                 2015                  6063                  6061                  6082             </td> <td style="width:10%;">                 Zugblech                  sheet                  plate                  coil             </td> <td style="width:10%;">                 Farbe                  color                  finish             </td> <td style="width:10%;">                 T                  70.330.1035.0 13K             </td> <td style="width:10%;">                 Zeichnung Nr./Drawing No.                  Made in Germany/Produced in Germany             </td> </tr> <tr> <td colspan="3">                 Werkstoff/Material: Aluminium, beschichtet/coated, anodisiert/anodized             </td> <td colspan="2">                 2015, 6063, 6061, 6082             </td> <td colspan="2">                 Zugblech, sheet, plate, coil             </td> </tr> <tr> <td colspan="3">                 Farbe/color/finish: T             </td> <td colspan="2">                 Zeichnung Nr./Drawing No.: 70.330.1035.0 13K             </td> <td colspan="2">                 Made in Germany/Produced in Germany             </td> </tr> <tr> <td colspan="3">                 Typ/Type: revos             </td> <td colspan="4">                 Bezeichnung/Title: GEHAUSEUNTERTEIL                  Baugröße 10-Kabelabgang 2x M20/M25                  Housing size 10-cable outlet 2x M20/M25             </td> </tr> </table>			1:2	<b>Material/Material</b> Aluminium beschichtet/coated anodisiert anodized	2015 6063 6061 6082	Zugblech sheet plate coil	Farbe color finish	T 70.330.1035.0 13K	Zeichnung Nr./Drawing No. Made in Germany/Produced in Germany	Werkstoff/Material: Aluminium, beschichtet/coated, anodisiert/anodized			2015, 6063, 6061, 6082		Zugblech, sheet, plate, coil		Farbe/color/finish: T			Zeichnung Nr./Drawing No.: 70.330.1035.0 13K		Made in Germany/Produced in Germany		Typ/Type: revos			Bezeichnung/Title: GEHAUSEUNTERTEIL Baugröße 10-Kabelabgang 2x M20/M25 Housing size 10-cable outlet 2x M20/M25			
1:2	<b>Material/Material</b> Aluminium beschichtet/coated anodisiert anodized	2015 6063 6061 6082	Zugblech sheet plate coil	Farbe color finish	T 70.330.1035.0 13K	Zeichnung Nr./Drawing No. Made in Germany/Produced in Germany																								
Werkstoff/Material: Aluminium, beschichtet/coated, anodisiert/anodized			2015, 6063, 6061, 6082		Zugblech, sheet, plate, coil																									
Farbe/color/finish: T			Zeichnung Nr./Drawing No.: 70.330.1035.0 13K		Made in Germany/Produced in Germany																									
Typ/Type: revos			Bezeichnung/Title: GEHAUSEUNTERTEIL Baugröße 10-Kabelabgang 2x M20/M25 Housing size 10-cable outlet 2x M20/M25																											