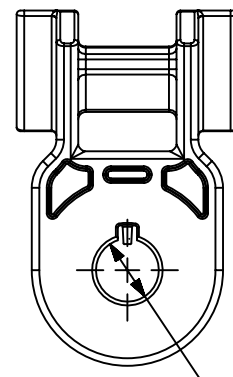
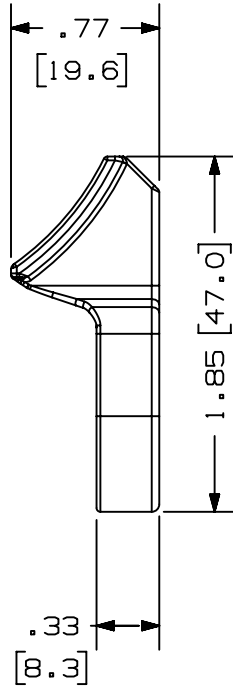
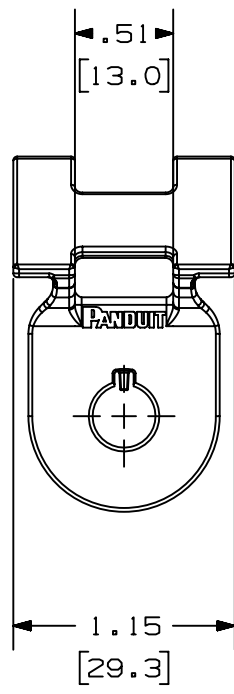
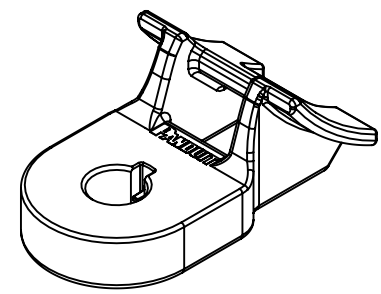


THIS COPY IS PROVIDED ON A RESTRICTED BASIS AND IS NOT TO BE USED IN ANY WAY DETRIMENTAL TO THE INTERESTS OF PANDUIT CORP.

- NOTES:
1. SEE WWW.PANDUIT.COM FOR PART NUMBER SUFFIX DESIGNATION CONCERNING PACKAGE SIZE, PART MATERIAL AND PART COLOR.
 2. DIMENSIONS IN [] ARE METRIC.
 3. ALL MATERIALS AND COMPONENTS USED MEET THE MATERIAL RESTRICTIONS OF RoHS (EUROPEAN DIRECTIVE 2011/65/EU ON THE RESTRICTION OF HAZARDOUS SUBSTANCES) AS PROPOSED BY THE RoHS TECHNICAL ADAPTATION COMMITTEE.
 4. MAX. BOLT TORQUE SPEC. IS 40 lbf-ft.



DIA AA



ITEM	RECOMMENDED BOLT SIZE	P/N	DIA. AA	WEIGHT lbs(g)/100pcs	FOR USE WITH THE FOLLOWING PANDUIT CABLE TIES
1	5/16"; MB	TMEH3S8-D350	0.33 [8.3]	1.55 lbs (703g)	MINIATURE; INTERMEDIATE; STANDARD; LIGHT HEAVY; HEAVY; EXTRA HEAVY
2	3/8"; M10	TMEH3S10-D350	0.40 [10.3]	1.51 lbs (683g)	
3	1/2"; M12	TMEH3S13-D350	0.51 [12.9]	1.41 lbs (641g)	

PART NUMBER		HD MEDIUM TORQUE MOUNT FAMILY	
TITLE		HD MEDIUM TORQUE MOUNT FAMILY	
CUSTOMER DRAWING			
ITEM REVISION NAME		00149EBA/01	
DATASET FILE NAME		00149EBA_DC/01	
		THIRD ANGLE PROJECTION	
MATERIAL		POLYAMIDE 6,6 IMPACT MODIFIED, HEAT STABILIZED, UV RESISTANT, BLACK	
DRAWING NUMBER		00149EBA_DC	
DRAWN BY	DATE	CHK	SCALE
CHN-MZ SG	FEB/14/19	DE	NONE
SHEET 1 OF 1		A	

A-SIZE CUSTOMER

01	07.26.19	BDK	DAEI	TGS	RELEASED TO PRODUCTION	049851
00A	FEB/14/19	CHN-MZSG	DE	PM	INITIAL RELEASE	
REV	DATE	BY	CHK	APR	DESCRIPTION	ECN