



Transformer plug

**Technical data**

**Ex-transformer plug acc. to IEC 60309-1/2, up to 415 V**

Marking accd. to 2014/34/EU	⊕ II 2 G Ex ed IIC T5
EC-Type Examination Certificate	PTB 99 ATEX 1039
Marking accd. to IECEx	Ex ed [ia] IIC T6/T5
IECEX Certificate of Conformity	IECEX BKI 04.0002
Permissible ambient temperature	-20 °C to + 40 °C
Rated voltage primary	250 V AC
Rated voltage secondary	12 V, 24 V, 36 V, 42 V or 230 V~
Frequency	50 - 60 Hz
Power consumption	max. 65 VA
Back up fuse, internal	0.5 A mT, replaceable
Connecting terminals	1 x 1 - 4 mm <sup>2</sup>
Protection class	I
Degree of protection accd. to EN 60529	IP54
Cable entry	Ø 10 - 20 mm
Enclosure material	glass-fibre reinforced polyester, polyamide

**Ordering details**

Voltage	h	Type	Weight approx.	Sec voltage	Order No.
<b>16 A transformer plug 4-pole</b>					
200-250 V		Transformer plug 65 VA	2.3 kg	42 V	<b>GHG 531 6469 V0000</b>
		Transformer plug 65 VA	2.3 kg	24 V	<b>GHG 531 6469 V5005</b>
		Transformer plug 65 VA	2.3 kg	12 V	<b>GHG 531 6469 V5025</b>
<b>16 A transformer plug 5-pole</b>					
380-415 V		Transformer plug 65 VA	2.3 kg	42 V	<b>GHG 531 6566 V0000</b>
		Transformer plug 65 VA	2.3 kg	24 V	<b>GHG 531 6566 V5005</b>
		Transformer plug 65 VA	2.3 kg	12 V	<b>GHG 531 6566 V5025</b>
		Transformer plug 65 VA	2.3 kg	230 V	<b>GHG 531 6566 V5023</b>
<b>Plug with fuse</b>					
200-250 V		Plug with fuse max. 6.3 A	1.3 kg	–	<b>GHG 531 7536 V0000</b>

**Accessories**

Plug cap 3/4 pole	<b>GHG 530 1935 R0002</b>
Plug cap 5 pole / Plug with fuse	<b>GHG 530 1935 R0005</b>

## 32 A 4-/5-pole transformer plug/ plug with fuse

1



Transformer plug



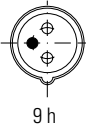

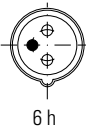
Plug cap

### Technical data

Ex-transformer plug acc. to IEC 60309-1/2, up to 415 V

Marking accd. to 2014/34/EU	⊕ II 2 G Ex de IIC T5
EC-Type Examination Certificate	PTB 99 ATEX 1041
IECEX Certificate of Conformity	IECEX BK1 04.0006
Marking accd. to IECEx	Ex ed [ia] IIC T6/T5
Permissible ambient temperature	-20 °C to +40 °C
Rated voltage primary	250 V AC
Rated voltage secondary	24 V, 36 V or 42 V/230 V AC
Frequency	50/60 Hz
Power consumption	max. 65 VA
Back up fuse, internal	0.5 A mT, replaceable
Connecting terminals	1 x 1 - 4 mm <sup>2</sup>
Protection class	I
Degree of protection accd. to EN 60529	IP54
Cable entry	∅ 10 - 20 mm
Enclosure material	glass-fibre reinforced polyester, polyamide

### Ordering details

Voltage	h	Type	Weight approx.	Sec voltage	Order No.
200-250 V		Transformer plug 65 VA	2.3 kg	42 V	<b>GHG 532 6469 V0000</b>
		Transformer plug 65 VA	2.3 kg	24 V	<b>GHG 532 6469 V5005</b>
380-415 V		Transformer plug 65 VA	2.3 kg	42 V	<b>GHG 532 6566 V0000</b>
		Transformer plug 65 VA	2.3 kg	24 V	<b>GHG 532 6566 V5005</b>
		Transformer plug 65 VA	2.3 kg	12 V	<b>GHG 532 6566 V5025</b>
		Transformer plug 65 VA	2.3 kg	230 V	<b>GHG 532 6566 V5023</b>
200-250 V		Plug with fuse max. 6.3 A	1.3 kg		<b>GHG 532 7536 V0000</b>
<b>Accessories</b>					
Plug cap 4 pole					<b>GHG 530 1935 R0002</b>
Plug cap 5 pole / plug with fuse					<b>GHG 530 1935 R0005</b>



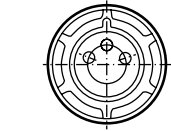
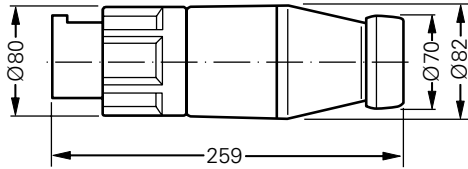
Transformer plug



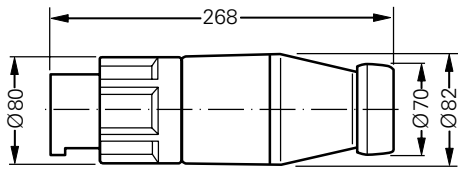
Plug cap

1

Dimension drawing



Transformer plug 16 A



Transformer plug 32 A