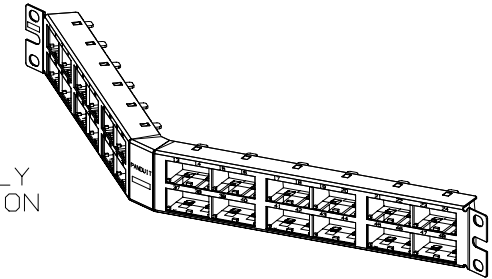
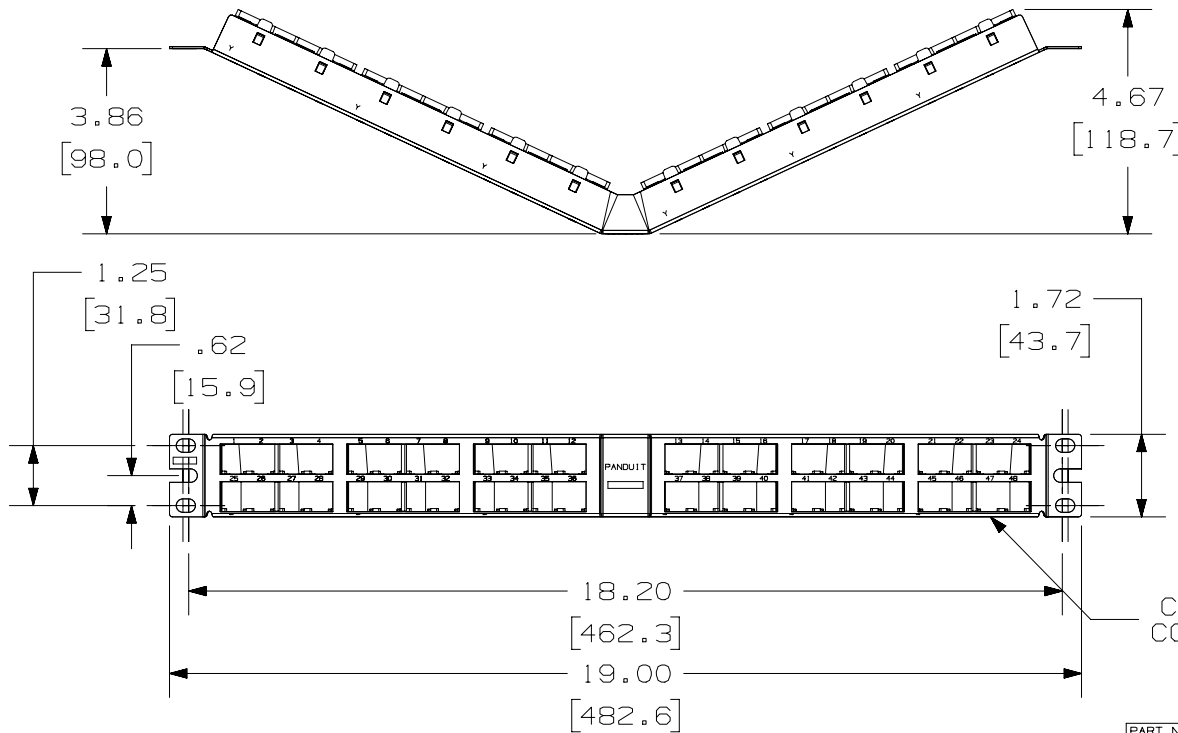


THIS COPY IS PROVIDED ON A RESTRICTED BASIS AND IS NOT TO BE USED IN ANY WAY DETRIMENTAL TO THE INTERESTS OF PANDUIT CORP.

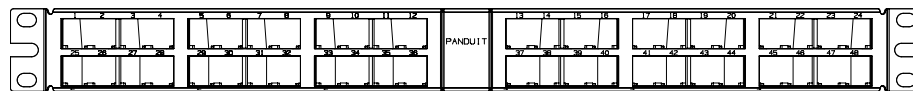
PANDUIT P/N	WEIGHT
CPPA48HDWBL Y CPPA48HDWWH	6.88 LB/10 PCS (3215.2.0 g/10 PCS)

NOTES:

- SEE CURRENT CATALOG FOR ADDITIONAL PART NUMBER SUFFIXES TO INDICATE COLOR AND OR PACKAGE QUANTITY.
- SEE CATALOG FOR COMPLETE LIST OF PARTS APPLICABLE FOR USE WITH THIS PART.
- PACKAGE CONTENTS:
 (1) -48 PORT ANGLED STAMPING
 (6) -8 POSITION FACEPLATE (ASSEMBLED TO PANEL)
 (1) -SCREW KIT (INCLUDES FOUR #12-24 SCREWS)
- DIMENSIONS IN [] ARE IN METRIC.
- CPPA48HDWBL Y FABRICATED COMPONENTS ARE BLACK.
 CPPA48HDWWH FABRICATED COMPONENTS ARE WHITE.



CPPA48HDWBL Y CONFIGURATION



CPPA48HDWWH CONFIGURATION
NOTE: NO RECTANGULAR BOXES

PART NUMBER CPPA48HDWBL Y / CPPA48HDWWH	
TITLE MINI-COM 48 PORT ANGLED HIGH DENSITY MODULAR PATCH PANEL	
CUSTOMER DRAWING	
ITEM REVISION NAME M02479DB/01	
DATASET FILE NAME M02479DB_DC82/01A	
UNLESS OTHERWISE SPECIFIED, DIMENSIONAL TOLERANCES ARE: IN [mm] .x ± .03 [.8] .xxx ± .010 [.3] .xx ± .03 [.8] ANGLES ±	
THIRD ANGLE PROJECTION	
DRAWING NUMBER: 02479-082	
DRAWN BY JSP	DATE 8-8-06
CHK MJD	SCALE NONE
SHT 1 OF 1	
SIZE A	

REV	DATE	BY	CHK	APR	DESCRIPTION	ECN
3	11/12/18	BAME	KRKE	MMR	B. REMOVED METRIC SCREWS	02479-082
2	10/4/17	BAME	KRKE	MMR	ADDED P/N CPPA48HDWWH	02479-082
1	5/7/14	JSP	REFR	MMR	A. REVISED DRAWING TITLE BLOCK	02479-082
R	8-8-06	JSP	MJD	MJD	RELEASED TO PRODUCTION	02479-082

D10100DA/14