

Lampholders for Halogen Incandescent Lamps

Partly enclosed R7s lampholder

Casing: ceramic, T350

Contact pin: Cu, silver bulb

Nominal rating: 8/250

Leads: Cu nickel-plated, stranded conductors

0.75 mm², PTFE-insulation, length: 200 mm

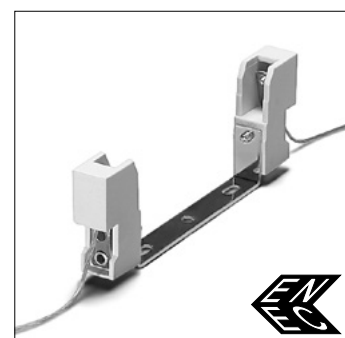
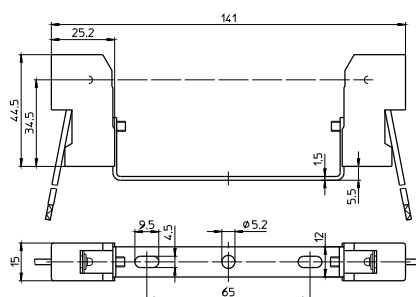
Oblong holes for screws M4

Central hole for screw M5

Weight: 71.3 g, unit: 200 pcs.

Type: 32380 contact distance: 114.2 mm

Ref. No.: 109497



R7s Metal Lampholders

For mains voltage halogen incandescent lamps

R7s lampholder

Casing: Al, T300, contact pin: Cu, silver bulb

Nominal rating: 10/250

Lead: Cu nickel-plated, stranded conductors

1 mm², PTFE-insulation, length: 300 mm

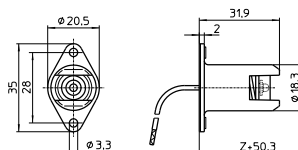
Fixing flange

Fixing holes for screws M3

Weight: 15.7 g, unit: 1000 pcs.

Type: 30523

Ref. No.: 100710



R7s lampholder

Casing: Al, T300, contact pin: Cu, silver bulb

Nominal rating: 10/250

Lead: Cu nickel-plated, stranded conductors

1 mm², PTFE-insulation, length: 350 mm

Fixing bracket

Fixing holes for screws M4

Weight: 24.8 g, unit: 500 pcs.

Type: 30550

Ref. No.: 100720

