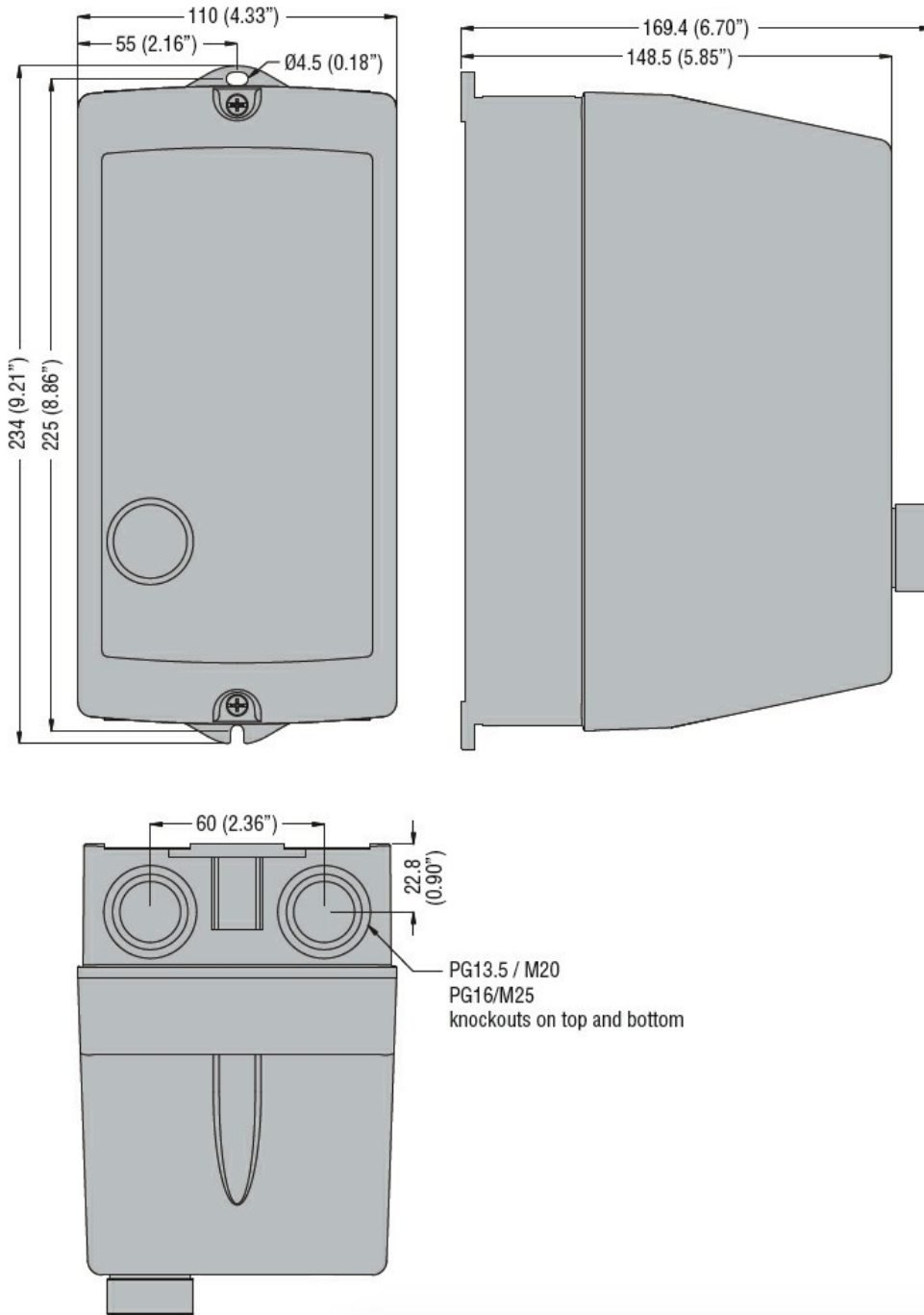
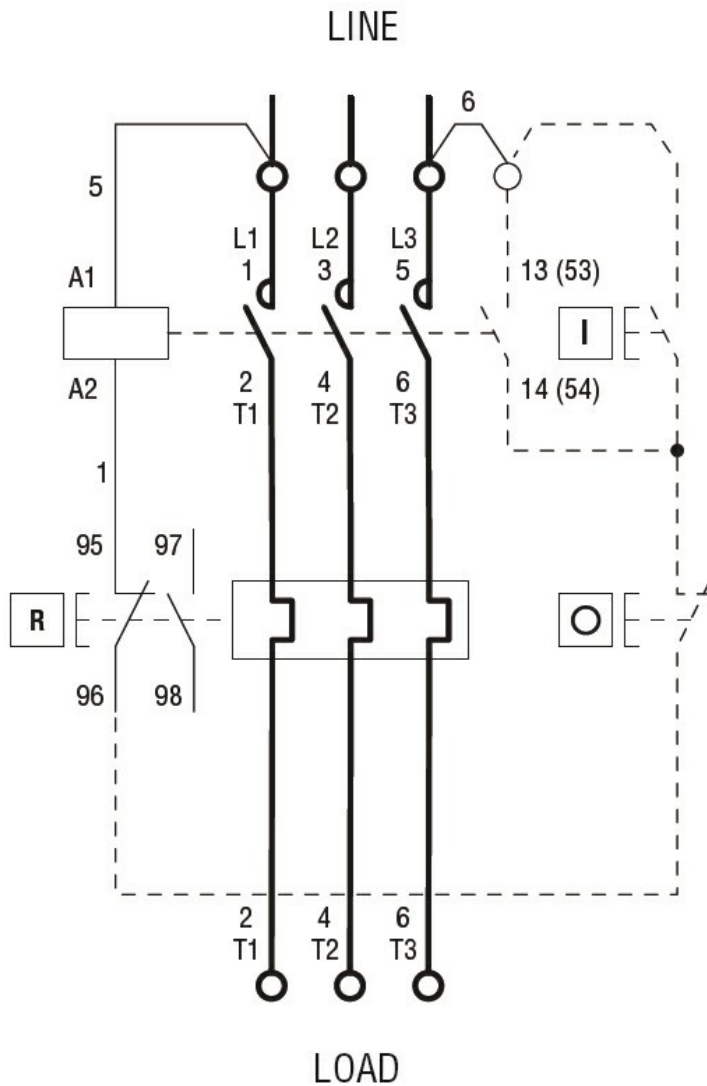




Product designation	Direct-on-line starter		
Product type designation	M2R02512...B3		
Electrical features			
Relay adj range	A	20-25	
IEC technical characteristics ($\leq 440V$)			
	le	A	25
	kW	kW	11
Components			
Starter enclosure standard supplied	M2RA		
Contactor standard supplied	BF2510A		
Thermal relay standard supplied	RF382500		
Mechanical features			
Weight	g	1165	
Ambient conditions			
Operating temperature			
	min	°C	-25
	max	°C	+60
Storage temperature			
	min	°C	-40
	max	°C	+70
Resistance & Protection			
Frontal IP degree	IP65		
Dimensions			



Wiring diagrams



R = Reset; I = Start; O = Stop

Certifications and compliance

Compliance

- IEC/EN 60947-1
- IEC/EN 60947-4-1
- UL508 CSA C22.2 n° 14

Certificates

- CSAus
- cULus
- EAC

ETIM classification

ETIM 8.0

EC001037 -
Motor
starter/Motor
starter
combination