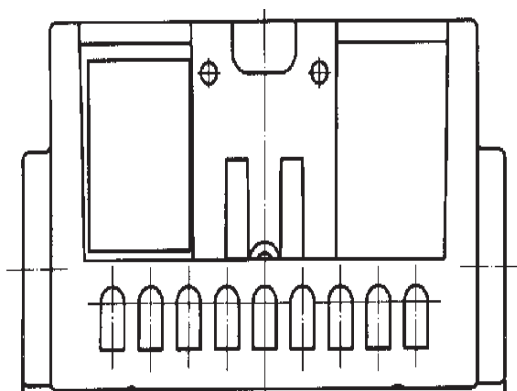


Montageanleitung Wandhalter SW

Mounting instructions Wall Bracket SW

Mode d'emploi Support Mural SW


CE



3 1145 000 962 D/E/F (f)

EAT•N

Powering Business Worldwide

1. Sicherheitshinweise


Achtung! Wandhalter nur außerhalb explosionsgefährdeter Bereiche montieren!

2. Anwendung/Beschreibung

Der Wandhalter dient zur Aufbewahrung von CEAG Leuchten der Serien

SE5...

W 28...

SEB 8 / SEB 7


SEB 9 / SEB 10

3. Montage

Der Wandhalter kann mit drei Schrauben durch die Rückwand und mit vier Schrauben durch den Boden befestigt werden.

4. Maßbild

Befestigungsbohrungen
Ø 5mm

1. Safety instructions:


Attention! The wall is only to be installed in a safe area!

2. Use/ Description

The wall bracket is used for storing CEAG Handlamps series

SE5...

W 28...

SEB 8 / SEB 7

SEB 9 / SEB 10

3. Installation

The wall bracket can be fixed with 3 screws through its back and 4 screws through its bottom.

4. Dimension drawing

Fastening holes
dia. Ø 5mm

1. Consignes de sécurité:

Attention! le support mural ne doit être installé qu'en dehors d'une atmosphère explosive!

3. Installation

Le support mural peut être fixé avec 3 vis à travers son dos avec 4 vis à travers son fond.

4. Plan coté

Trous de fixation dia. Ø 5mm

2. Utilisation/ Description

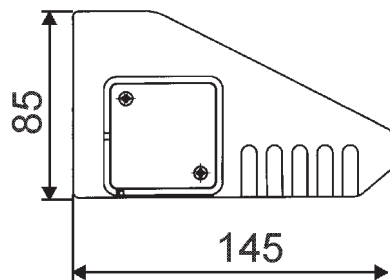
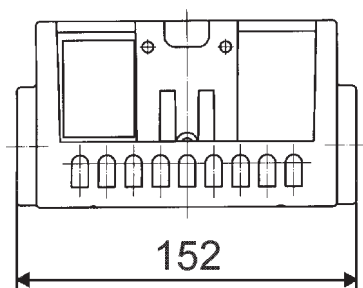
Le support mural sert à garder des projecteurs des séries!

SE5...

W 28...

SEB 8 / SEB 7

SEB 9 / SEB 10



CZ: "Tento návod k použití si můžete vyžádat ve svém mateřském jazyce u příslušného zastoupení společnosti Cooper Crouse-Hinds/CEAG ve vaší zemi."

DK: "Montagevejledningen kan oversættes til andre EU-sprog og rekvireres hos Deres Cooper Crouse-Hinds/CEAG leverandør"

E: "En caso necesario podrá solicitar de su representante Cooper Crouse-Hinds/CEAG estas instrucciones de servicio en otro idioma de la Unión Europea"

EST: "Seda kasutusjuhendit oma riigikeeles võite küsida oma riigis asuvasst asjaomasesst Cooper Crouse-Hinds/CEAG esindusest."

FIN: "Tarvittaessa tämän käyttöohjeen käännös on saatavissa toisella EU:n kielellä Teidän Cooper Crouse-Hinds/CEAG - edustajaltanne"

GR: *Εάν χρειασθεί, μεταφράση των οδηγιών χρήσε-
ως σε άλλη γλώσσα της ΕΕ, μπορεί να ζητηθεί από
τον Αντιπρόσωπο της Cooper Crouse-
Hinds/CEAG*

H: "A kezelési útmutatót az adott orszá-
g nyelvéen a Cooper Crouse-Hinds/CEAG cég
helyi képviselőtől igényelheti meg."

I: "Se desiderate la traduzione del manuale
operativo in un'altra lingua della Comunità a
Europa potete richiederla al vostro
rappresentante Cooper Crouse-Hinds/CEAG"

LT: Šios naudojimo instrukcijos, išverstos į Jūsų
gimtają kalbą, galite pareikalauti atsakingoje
Cooper Crouse-Hinds/CEAG atstovybėje savo
šalyje.

LV: "Šo ekspluatācijas instrukciju valsts valodā
varat pieprasīt jūsu valsts atbildīgajā Cooper
Crouse-Hinds/CEAG pārstāvniecībā."

M: Jistghu jitolbu dan il-manwal fil-lingwa
nazzjonali tagħhom minghand ir-rappreżentant
ta' Cooper Crouse Hinds/CEAG f'pajjiżhom.

NL: "Indien noodzakelijk kan de vertaling van
deze gebruiksinstructie in een andere EU-taal
worden opgevraagd bij Uw Cooper Crouse-
Hinds/CEAG - vertegenwoordiging"

P: "Se for necessária a tradução destas
instruções de operação para outro idioma da
União Europeia, pode solicita-la junto do seu
representante Cooper Crouse-Hinds/CEAG"

PL: Niniejszą instrukcję obsługi w odpowiedniej
wersji językowej można zamówić w
przedstawicielstwie firmy Cooper-Crouse-
Hinds/CEAG na dany kraj.

S: "En översättning av denna montage- och
skötselinstruktion till annat EU - språk kan vid
behov beställas från Er Cooper Crouse-
Hinds/CEAG - representant"

SK: "Tento návod na obsluhu Vám vo Vašom
rodnom jazyku poskytnú zastúpenie spoločnosti
Cooper Crouse-Hinds/CEAG vo Vašej krajine."

SLO: "Navodila za uporabo v Vašem jeziku
lahko zahtevate pri pristojnem zastopništvu
podjetja Cooper Crouse-Hinds/CEAG v Vaši
državi."

RUS: "При необходимости, вы можете запрашивать
перевод данного руководства на другом языке
ЕС или на русском от вашего
Cooper Crouse-Хиндс / CEAG - представителей."

Eaton is dedicated to ensuring that reliable, efficient and safe power is available when it's needed most. With unparalleled knowledge of electrical power management across industries, experts at Eaton deliver customized, integrated solutions to solve our customers' most critical challenges.

Our focus is on delivering the right solution for the application. But, decision makers demand more than just innovative products. They turn to Eaton for an unwavering commitment to personal support that makes customer success a top priority. For more information, visit

www.eaton.com/electrical.

Cooper Crouse-Hinds GmbH

Neuer Weg-Nord 49
69412 Eberbach
E-Mail: Info-Ex@Eaton.com
www.crouse-hinds.de

© 2015 Eaton
All Rights Reserved
Printed in Germany
Publication No.
31 145000962 D/E/F (f)
Auflage /32.2015/ CS

Changes to the products, to the information contained in this document, and to prices are reserved; so are errors and omissions. Only order confirmations and technical documentation by Eaton is binding. Photos and pictures also do not warrant a specific layout or functionality. Their use in whatever form is subject to prior approval by Eaton. The same applies to Trademarks (especially Eaton, Moeller, and Cutler-Hammer). The Terms and Conditions of Eaton apply, as referenced on Eaton Internet pages and Eaton order confirmations. Eaton is a registered trademark.

All trademarks are property of their respective owners.