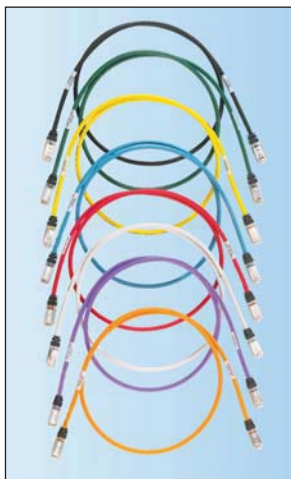


UL US TX6A™ 10Gig™ Shielded Patch Cords

- Exceed requirements ANSI/TIA-568-C.2 Category 6A, IEEE 802.3an-2006, and ISO 11801 Class E_A channel standards
- Exceed requirements of ANSI/TIA-568-C.2 Category 6A and ISO 11801 Class E_A component standards
- Meet requirements of IEEE 802.3af and IEEE 802.3at for PoE applications
- Color-coded, keyed modular plugs mechanically and visually distinguish connections to prevent unintentional mating with unlike keyed or non-keyed jack modules accommodating more discrete networks
- Each patch cord is 100% performance tested and wired T568B
- Constructed of 26 AWG stranded shielded copper cable (nominal cable diameter is 0.23 in.) and TX6™ PLUS Shielded Modular Plugs for superior performance
- Cable includes overall metal shield that provides conductive path for grounding
- Plug meets all applicable ANSI/TIA-968-A requirements and exceeds IEC 60603-7 specifications
- Plug uses an integral pair manager to optimize performance and consistency by reducing untwisting of conductors within the plug
- Plug performance in center of TIA/EIA component range, ensuring interoperability and 10GBASE-T Ethernet channel performance
- Labels on patch cords provide identification of performance level, length, and quality control number
- Patented tangle-free latch prevents snags and provides easy release, saving time on frequent moves, adds, and changes
- Optional patch cord color bands snap on and off individual patch cables offering endless color-coding options
- Optional RJ45 plug lock-in device blocks unauthorized removal of cable, IP phone, other networking equipment, or critical connection



Part Number	Part Description	Length (Ft.)	Cable Color	Std. Pkg. Qty.	Std. Ctn. Qty.
Non-Keyed Patch Cord					
STP6X3IG‡	Category 6A, 10 Gb/s S/FTP patch cord with TX6™ PLUS Modular Plugs on each end.	3	Off White	1	10
Keyed Patch Cord					
STP6X3BL*	Keyed, Category 6A, shielded patch cord with TX6™ PLUS Keyed Modular Plug on one end and TX6™ Non-Keyed Modular Plug on the other end.	3	International Gray	1	10

‡For lengths 2 to 20 feet (increments of one foot) and 25, 30, 35, 40 feet change the length designation in the part number to the desired length. For standard cable colors other than IG (International Gray) replace IG suffix with BL (Black), BU (Blue), GR (Green), RD (Red), YL (Yellow), OR (Orange), or VL (Violet) to end of part number. For example, the part number for a blue 15-foot patch cord is STP6X15BU.

*For lengths other than 3 feet (5, 7, 10, 14 feet) change the length designation in the part number to the desired length. For standard cable colors other than Black, replace suffix BL (Black) with BU (Blue), RD (red), YL (Yellow), GR (Green) or OR (Orange), each color representing a different keyed configuration.

Contact customer service for universal reference patch cords.

Patch cord color bands available on page B.91.

RJ45 plug lock-in device available on page B.89.

Must be installed as part of a complete TX6A™ 10Gig™ Copper Cabling System in order to achieve 10GBASE-T certified performance.

Labels for TX6A™ 10Gig™ Shielded Patch Cords



Suggested Label Solutions for TIA/EIA-606-A Compliance

Patch Cord Part Number	Laser/Ink Jet Desktop Printer Label	TDP43ME Thermal Transfer Desktop Printer Label	PanTher™ LS8E Hand-Held Printer Label	Cougar™ LS9 Hand-Held Printer Label
All Patch Cords	S100X150YAJ	S100X150VATY	S100X150VAC	T100X000CBC-BK

For complete labeling solutions and product information, reference charts on pages O.1 – O.22 of SA-NCCB51.