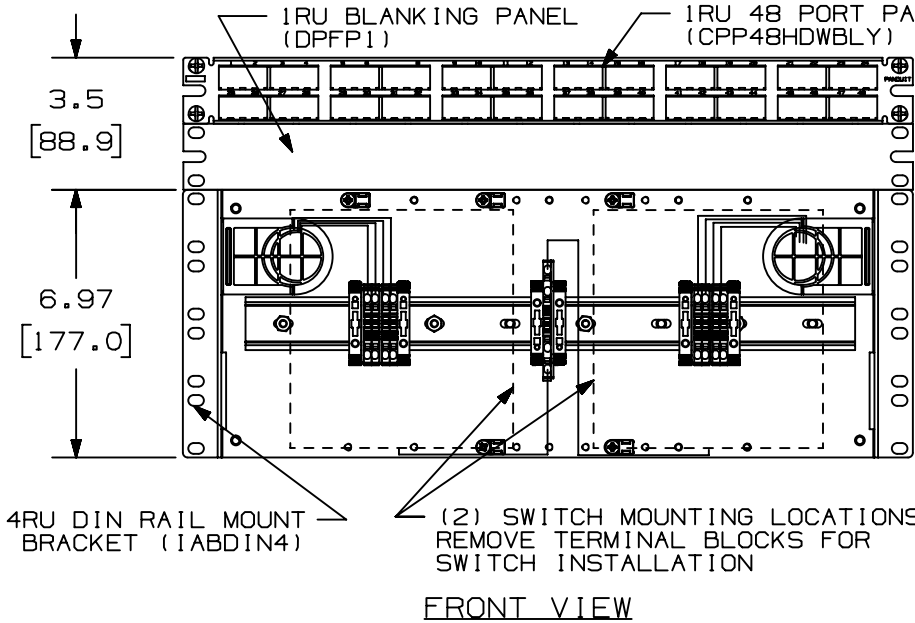
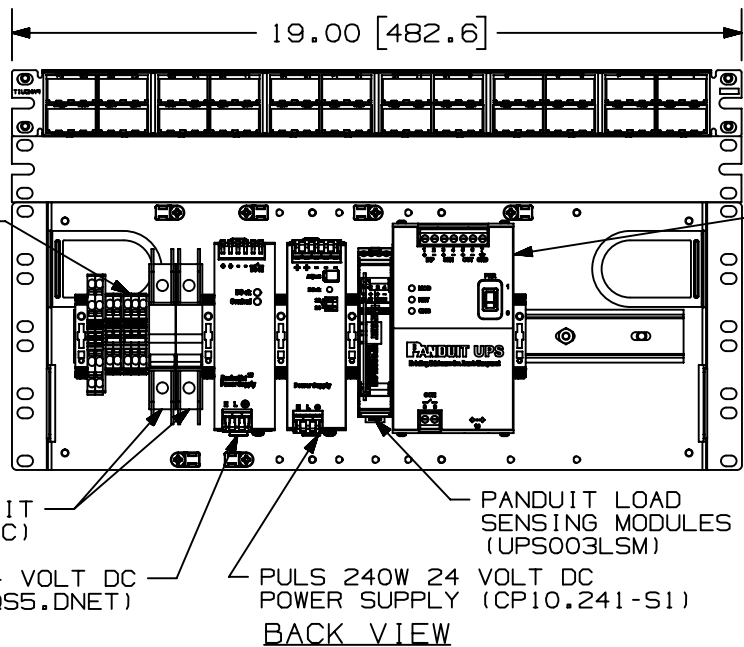


THIS COPY IS PROVIDED ON A RESTRICTED BASIS AND IS NOT TO BE USED IN ANY WAY DETRIMENTAL TO THE INTERESTS OF PANDUIT CORP.



NOTES:

- PART INCLUDES:
    - (1) DIN RAIL MOUNT BRACKET (IABDIN4)
    - (1) PULS 91.2W 24 VOLT DC POWER SUPPLY (QS5.DNET)
    - (1) PULS 240W 24 VOLT DC POWER SUPPLY (CP10.241-S1)
    - (2) WEIDMULLER CIRCUIT BREAKERS (BR1D5UC)
    - (2) WEIDMULLER RED AND WHITE TERMINAL BLOCKS FOR INCOMING POWER (100-240 VAC 50-60HZ)
    - (1) 48 PORT PATCH PANEL (CPP48HDWBLY)
    - (1) 1RU BLANKING PANEL (DPFP1)
  - RECOMMENDED TO IMPROVE THERMAL PERFORMANCE OF SWITCHES AND REDUCE UNINTENDED CONTACT WITH POWER SUPPLIES. IF NO SPACE IS AVAILABLE FOR THE BLANKING PANEL, MOVE THE PATCH PANEL DOWN 1RU TOWARD THE TIER.
  - (1) PANDUIT UNINTERRUPTIBLE POWER SUPPLY, 24 VOLT DC 100W (UPS00100DC)
  - (1) PANDUIT LOAD SENSING MODULES (UPS003LSM)
  - (2) STRAIN RELIEF BARS (SRB19MDBL AND SRB19BLY) - (NOT SHOWN)
- POWER CIRCUIT DESIGNED FOR UP TO (2) 24 VOLT DC INDUSTRIAL ETHERNET SWITCHES NOT TO EXCEED 42 WATTS PER SWITCH
  - COMPLIES WITH UL508A, WHEN INSTALLED PER PANDUIT INSTRUCTIONS
  - CLASS 2 POWER CIRCUITS ARE PRE-WIRED, LABELED, AND TESTED.

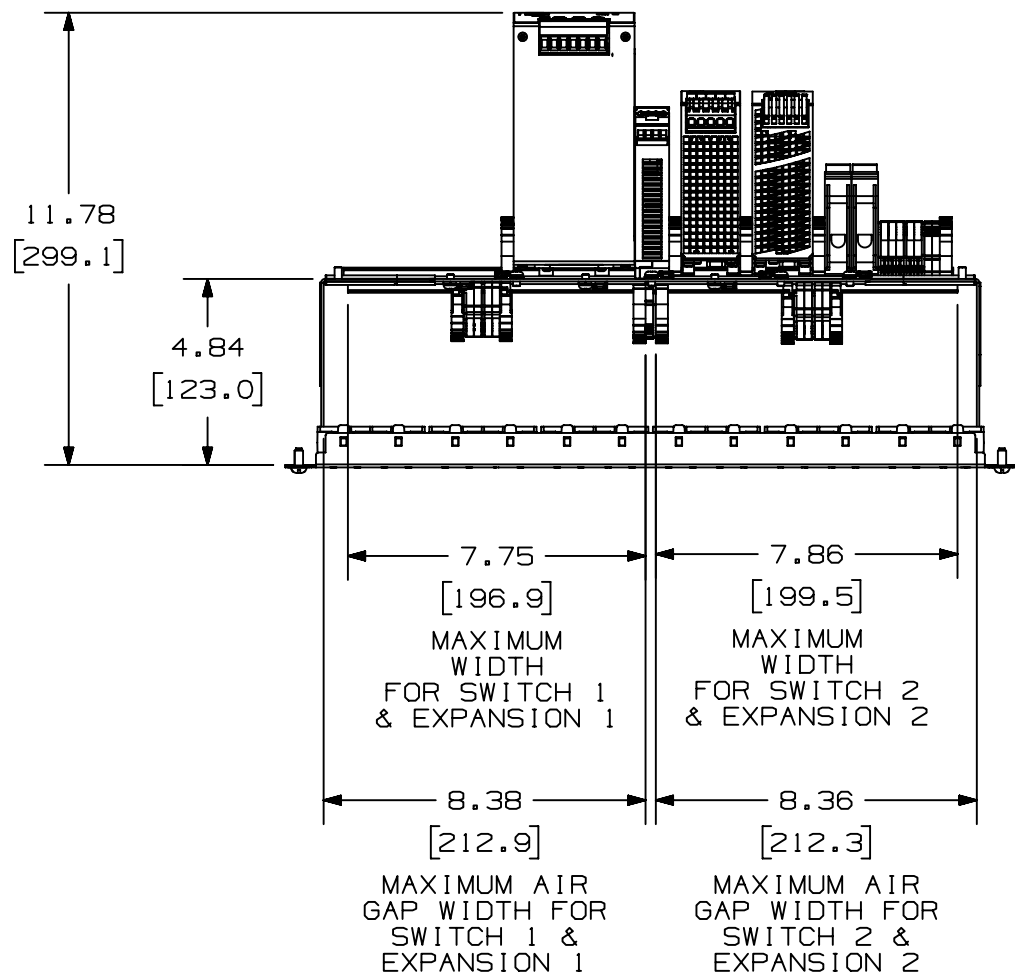


PART NUMBER		ZDINS25		
TITLE		UNIVERSAL IDF, 100-240VAC IN, (2) PAN UPS 100W, HIGH DENSITY PATCH PANEL		
ITEM REVISION NAME		CUSTOMER DRAWING		
DATASET FILE NAME		00157EDD/02		
MATERIAL		N/A		
DRAWING NUMBER		00157EDD-DC		
THIRD ANGLE PROJECTION				
REV	DATE	BY	CHK	SCALE
02A	2/7/22	JBO	MRWA	NONE
DESCRIPTION		ECN	SHEET 1 OF 2	
ADDED 1RU BLANKING PANEL		00157EDD	A	
ADDED DIM OF MAX AMOUNT OF SPACE FOR SWITCHES & MAX AIR GAP, SHEET 2				

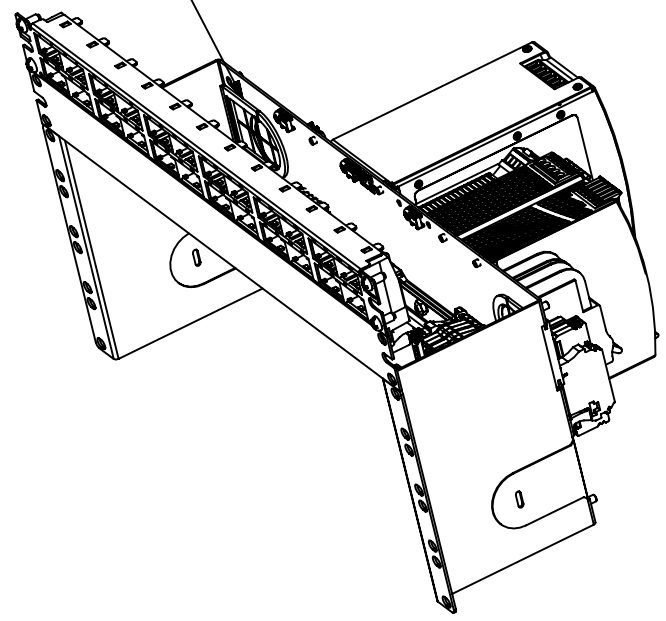
A-SIZE CUSTOMER

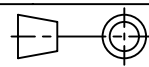
THIS COPY IS PROVIDED ON A RESTRICTED BASIS AND IS NOT TO BE USED IN ANY WAY DETRIMENTAL TO THE INTERESTS OF PANDUIT CORP.

TOP VIEW



WIRE HARNESS FROM POWER PASSES THROUGH THE GROMMET TO SWITCH MOUNTING LOCATIONS



TITLE		UNIVERSAL IDF, 100-240VAC IN, (2) PAN UPS 100W, HIGH DENSITY PATCH PANEL		
		CUSTOMER DRAWING		
ITEM REVISION NAME		00157EDD/02		
DATASET FILE NAME		00157EDD_DC/02A		
		THIRD ANGLE PROJECTION		
MATERIAL		N/A		
		DRAWING NUMBER		
		00157EDD-DC		
DRAWN BY	DATE	CHK	SCALE	SIZE
RHG	4/16/18	EHA	NONE	A

A-SIZE CUSTOMER

02A	2/7/22	JBO	MRWA	BETL	REFER TO SHEET 1 FOR REVISION CONTROL	00157EDD
REV	DATE	BY	CHK	APR	DESCRIPTION	ECN