

911 20

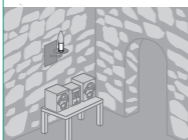


 **legrand**<sup>®</sup>

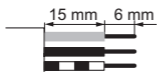
**DOUILLE A VIS**  
**E14 - 100W maxi**

 **legrand**<sup>®</sup>

[www.legrandelectric.com](http://www.legrandelectric.com)






## PREPARATION



Câble souple 0,5 mm<sup>2</sup>

## RECOMMANDATIONS

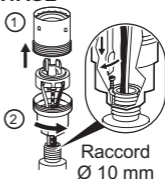
Lampe incandescente   
ou halogène   
ou basse consommation 

100 W maxi - 230 V~

## DEMONTAGE



## MONTAGE



• Acier laitoné.

 Respecter strictement les conditions d'installation et d'utilisation.  
Avant toute intervention, couper le courant.



**2** ans  
GARANTIE

