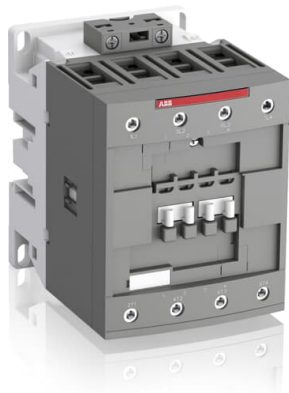


PRODUCT-DETAILS

# AF80-40-00-12

## AF80-40-00-12 48-130V50/60HZ-DC Contactor



### Informations générales

Extension du type de produit	AF80-40-00-12
Code de produit	1SBL397201R1200
EAN	3471523133723
Description courte	AF80-40-00-12 48-130V50/60HZ-DC Contactor

Description longue	<p>The AF80-40-00-12 is a 4 pole - 1000 V IEC or 600 UL contactor with screw terminals, controlling motors up to 37 kW / 400 V AC (AC-3) and switching power circuits up to 125 A (AC-1) or 105 A UL general use. Thanks to the AF technology, the contactor has a wide control voltage range (48-130 V 50/60 Hz and DC), managing large control voltage variations, reducing panel energy consumptions and ensuring distinct operations in unstable networks. Furthermore, surge protection is built-in, offering a compact solution. AF contactors have a block type design, can be easily extended with add-on auxiliary contact blocks and an additional wide range of accessories.</p>
--------------------	---

### Commande

Quantité minimum	1 pièce
Code douanier	85364900

### Downloads Préférés

Instructions et manuels	1SBC101047M6801
-------------------------	-----------------

CAD Dimensional  
Drawing

2CDC001079B0201

---

## Dimensions

---

Produit Largeur Net	90 mm
Produit Longueur Net	116 mm
Produit Hauteur Net	125.5 mm
Poids net	1.49 kg

---

## Technique

---

Number of Main Contacts NO	4
Number of Main Contacts NC	0
Number of Auxiliary Contacts NO	0
Number of Auxiliary Contacts NC	0
Normes et standards	IEC/EN 60947-1, IEC/EN 60947-4-1, UL 60947-1, UL 60947-4-1, CSA C22.2 No. 60947-1:22, CSA C22.2 No. 60947-4-1:22
Tension	Circuit principal 1000 V
Fréquence assignée (f)	Circuit de commande 50 / 60 Hz Circuit principal 50 / 60 Hz
Courant thermique conventionnel à l'air libre ( $I_{th}$ )	acc. to IEC 60947-4-1, Open Contactors $\Theta = 40\text{ °C}$ 125 A
Courant assignée d' emploi AC-1 ( $I_e$ )	(690 V) 40 °C 125 A (690 V) 60 °C 105 A (690 V) 70 °C 90 A
Courant assignée d' emploi AC-3 ( $I_e$ )	(415 V) 60 °C 80 A (440 V) 60 °C 80 A (500 V) 60 °C 65 A (690 V) 60 °C 49 A (1000 V) 60 °C 25 A (380 / 400 V) 60 °C 80 A (220 / 230 / 240 V) 60 °C 80 A
Puissance assignée d' emploi AC-3 ( $P_e$ )	(415 V) 45 kW (440 V) 45 kW (500 V) 45 kW (690 V) 45 kW (1000 V) 35 kW (380 / 400 V) 37 kW (220 / 230 / 240 V) 22 kW
Courant assigné de courte durée admissible ( $I_{cw}$ )	at 40 °C Ambient Temp, in Free Air, from a Cold State 10 s 780 A at 40 °C Ambient Temp, in Free Air, from a Cold State 15 min 140 A at 40 °C Ambient Temp, in Free Air, from a Cold State 1 min 300 A at 40 °C Ambient Temp, in Free Air, from a Cold State 1 s 1200 A at 40 °C Ambient Temp, in Free Air, from a Cold State 30 s 450 A
Maximum Breaking Capacity	cos phi=0.45 (cos phi=0.35 for $I_e > 100\text{ A}$ ) at 440 V 1150 A cos phi=0.45 (cos phi=0.35 for $I_e > 100\text{ A}$ ) at 690 V 750 A
Maximum Electrical Switching Frequency	(AC-1) 600 cycles per hour
Tension assignée d' isolement ( $U_i$ )	acc. to IEC 60947-4-1 1000 V acc. to UL/CSA 600 V

Tension assignée de tenue aux chocs ( $U_{imp}$ )	8 kV
Maximum Mechanical Switching Frequency	3600 cycles per hour
Rated Control Circuit Voltage ( $U_c$ )	50 Hz 48 ... 130 V 60 Hz 48 ... 130 V DC Operation 48 ... 130 V
Coil Consumption	Average Holding Value 50 / 60 Hz 4 V·A Average Holding Value 50 Hz 4 V·A Average Holding Value 60 Hz 4 V·A Average Holding Value DC 2 W Average Holding Value, from Warm State 2 W
Montage sur rail DIN	TH35-15 (35 x 15 mm Mounting Rail) acc. to IEC 60715
Mounting by Screws (not supplied)	2 x M4 or 2 x M6 screws placed diagonally
Connecting Capacity Main Circuit	Flexible with Ferrule 1/2x 6 ... 50 mm <sup>2</sup> Flexible with Insulated Ferrule 1/2x 6 ... 50 mm <sup>2</sup> Rigid Stranded 1x 6 ... 70 mm <sup>2</sup> Rigid Stranded 2x 6 ... 50 mm <sup>2</sup>
Connecting Capacity Control Circuit	Flexible with Ferrule 1/2x 0.75 ... 2.5 mm <sup>2</sup> Flexible with Insulated Ferrule 1x 0.75 ... 2.5 mm <sup>2</sup> Flexible with Insulated Ferrule 2x 0.75 ... 1.5 mm <sup>2</sup> Rigid Solid 1/2x 1 ... 2.5 mm <sup>2</sup> Rigid Stranded 1/2x 1 ... 2.5 mm <sup>2</sup>
Wire Stripping Length	Control Circuit 10 mm Main Circuit 17 mm
Indice de protection	acc. to IEC 60529, IEC 60947-1, EN 60529 Coil Terminals IP20 acc. to IEC 60529, IEC 60947-1, EN 60529 Main Terminals IP10
Type de borne	Screw Terminals

## Technique UL/CSA

Maximum Operating Voltage UL/CSA	Circuit principal 600 V
General Use Rating UL/CSA	(600 V AC) 105 A
Connecting Capacity Main Circuit UL/CSA	Rigid Stranded 1/2x 6-1 AWG
Connecting Capacity Control Circuit UL/CSA	Rigid Solid 1/2x 18-14 AWG Rigid Stranded 1/2x 18-14 AWG
Tightening Torque UL/CSA	Control Circuit 11 in·lb Main Circuit 53 in·lb

## Environnement

Température de l'air ambiant	Close to Contactor for Storage -60 ... +80 °C Near Contactor for Operation in Free Air -40 ... 70 °C
Climatic Withstand	Category B according to IEC 60947-1 Annex Q
Altitude de fonctionnement maximale autorisée	Without Derating 3000 m
REACH Declaration	2CMT2021-006202
Resistance to Vibrations acc. to IEC 60068-2-6	5 ... 300 Hz 3 g Closed position / 2 g Open position
Informations RoHS	2CMT2021-006277

Statut RoHS

Following EU Directive 2011/65/EU

---

**Certificats et Déclarations (Numéro de document)**


---

Certificat ABS	ABS_20-2060694-PDA
Certificat BV	BV_2634H36994B1
CB Certificate	CB_SE-96557M3
CCC Certificate	CCC_2013010304646569
CQC Certificate	CQC2013010304646569
Declaration of Conformity - CCC	2020980304001255
Déclaration de Conformité - CE	1SBD250001U1000
Declaration of Conformity - UKCA	1SBD250032U1000
Certificat DNV	DNV_TAE00001AF-4
EAC Certificate	EAC_RU_FRME77B03447
KC Certificate	KC_HW02016-15013C
Certificat LR	LRS_LR2002723TA-02
Certificat RMRS	RMRS_1400682124
Certificat UL	UL-US-L312527-1142-02114102-6 UL-CA-L312527-4142-02114102-6
UL Listing Card	UL_E312527

---

**Emballage**


---

Emballage Niveau 1 Unités	box 1 pièce
Emballage Niveau 1 Largeur	150 mm
Emballage Niveau 1 Longueur	150 mm
Emballage Niveau 1 Hauteur	103 mm
Emballage Niveau 1 Poids	1.62 kg
Emballage Niveau 1 EAN	3471523133723
Emballage Niveau 2 Unités	box 8 pièce
Emballage Niveau 2 Largeur	250 mm
Emballage Niveau 2 Longueur	300 mm
Emballage Niveau 2 Hauteur	300 mm
Emballage Niveau 2 Poids	12.96 kg
Emballage Niveau 3 Unités	192 pièce

---

**Classifications**


---

Code de classification d'objet	Q
ETIM 4	EC000066 - Magnet contactor, AC-switching
ETIM 5	EC000066 - Magnet contactor, AC-switching
ETIM 6	EC000066 - contacteur de puissance pour commutation de courant alternatif
ETIM 7	EC000066 - Power contactor, AC switching
ETIM 8	EC000066 - Power contactor, AC switching
eClass	V11.0 : 27371003
UNSPSC	39121529
Code de catégorie granulaire IDEA (IGCC)	4758 >> Iec Contactors
E-Number (Finland)	3707459
E-Number (Sweden)	3210314

