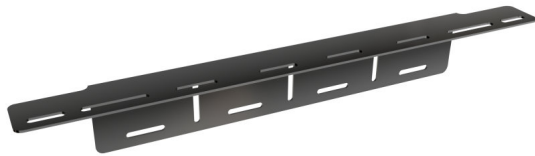


License Plate Bracket AX



Vibrant LED light for more safety on the road

To support the installation of the OSRAM LEDriving driving & working lights, OSRAM has developed a special series with suitable accessories for them. With the OSRAM License Plate Bracket AX, the OSRAM LEDriving driving & working lights, can now be installed quickly and easily on the appropriate vehicle. The OSRAM License Plate Bracket AX is a practical license plate bracket and holder for the OSRAM LEDriving driving lights in one. The OSRAM License Plate Bracket AX is compatible with a wide range of driving lights in the OSRAM LEDriving driving lights series. OSRAM also offers a 2-year guarantee¹). Please note: Special installation regulations apply. Individual special requirements and legislation of the countries must be observed.

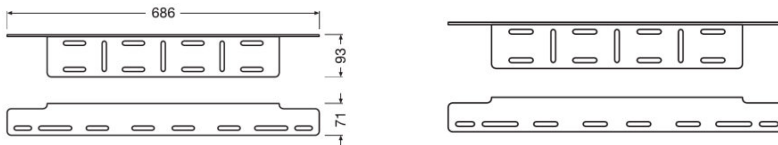
Product datasheet

Technical data

Product information

Order reference	LEDDL ACC 103
-----------------	---------------

Dimensions & weight



Product weight	680.00 g
Length	0.0 mm

Lifespan

Guarantee	2 years
-----------	---------

Country specific categorizations

Order reference	LEDDL ACC 103
-----------------	---------------

Logistical data

Commodity code	761699909900
----------------	--------------



Logistical Data

Product code	Product description	Packaging unit (Pieces/Unit)	Dimensions (length x width x height)	Volume	Gross weight
4062172147705	License Plate Bracket AX	Folding carton box 1	- x - x -		
4062172147712	License Plate Bracket AX	Shipping carton box 6	708 mm x 246 mm x 223 mm	38.84 dm ³	5495.00 g

The mentioned product code describes the smallest quantity unit which can be ordered. One shipping unit can contain one or more single products. When placing an order, for the quantity please enter single or multiples of a shipping unit.

Download Data

Product datasheet

File	
	User instruction LEDriving, License Plate Bracket AX
	360 Degree Image License Plate Bracket AX LEDDL ACC 103

Legal advice:

1) Precise terms and conditions at: www.osram.com/am-guarantee

Application advice:

For more detailed application information and graphics please see product datasheet and user instruction.

Application advice

For more detailed application information and graphics please see product datasheet.

Disclaimer

Subject to change without notice. Errors and omission excepted. Always make sure to use the most recent release.

OSRAM