

EN

One phase energy meter, direct connection 40 A

with MID declaration of conformity and 1 pulse (S0) output

MID certification concerns active energy only.

User instructions

EU declaration of conformity:
<http://hgr.io/r/ecp140d>



6LE005492Ad

ECP140D

Safety instructions

This device must be installed only by a professional electrician fitter according to local applicable installation standards. Do not plug in or unplug this product when the power supplying is ON. Its use is only permitted within the limits shown and stated in the installation instructions. The device and the equipment connected can be destroyed by loads exceeding the values stated.

Error condition:

When the display shows the message **ERROR 2** or **ERROR 3**, the meter has got a malfunction and must be replaced.

Operating principle

This meter measures the active energy used in an electrical installation.
 - Active Energy Class B (according to EN 50470)
 - Active Power Class 1 (according to IEC 62053-21 and IEC 61557-12)
 This device has a LCD and 1 push-button key to read Energies, V, I, PF, F, P. The design and manufacture of this meter comply with Standard EN 50470-3 requirements.

Product presentation

LCD display:



Energy register (kWh), not resettable



Energy import (consumption →)
 Energy export (production ←)

Symbols

- One phase
- Protected by double insulation (Class II)
- Backstop: Reversal preventing device

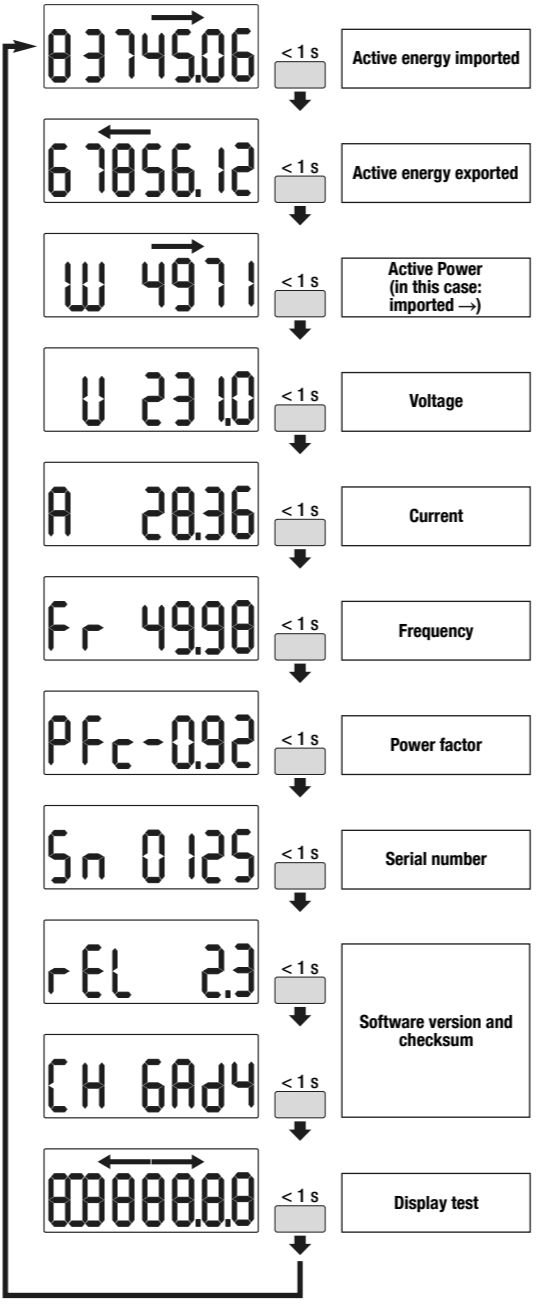
Commands

- Command button:
Short press: Push briefly (<1 sec.) the button and then release it.
 Used to scroll pages.
- Optical metrological LED
 5000 Imp/kWh

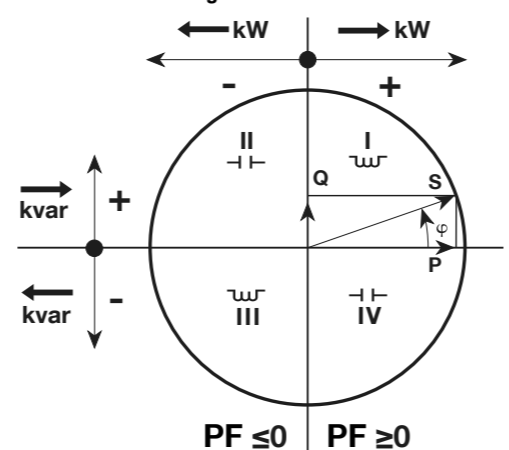
Note:
 If no button is pushed for at least 20 seconds the display goes back to the Main Page.

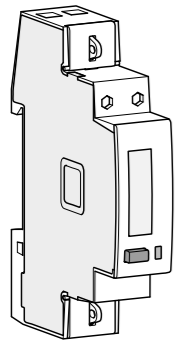


Main page is depending on current power direction indication ←→ with the corresponding global and partial energy register display.



Power factor Convention according to IEC 62053-23





Eenfase energiemeter, directe stroommeting 40 A

met MID-verklaring van overeenstemming en 1 puls (S0) uitvoer

MID certificering heeft alleen betrekking op werkelijke energie.

Gebruikersinstructies

EU-conformiteitsverklaring:
<http://hgr.io/r/ecp140d>



6LE005492Ad

ECP140D

Veiligheidsinstructies

Dit apparaat mag alleen worden geïnstalleerd door een professionele installateur in overeenstemming met de geldende installatienormen. Sluit dit product niet aan of koppel het niet los bij ingeschakelde spanning. Het gebruik ervan is alleen toegestaan binnen de aangegeven grenzen en vermeld in de installatie-instructies. Het apparaat en het aangesloten apparaat kunnen worden beschadigd door belastingen die de vermelde waarden overschrijden.

Werkingsprincipe

Deze meter meet de actieve energie die wordt gebruikt in een elektrische installatie. Alleen het totale actieve energieregister kan voor factureringdoeleinden worden gebruikt volgens de meetinstrumentrichtlijn (MID).

- Reële energieklasse B (volgens EN 50470)
 - Reële vermogensklasse 1 (volgens IEC 62053-21 en IEC 61557-12)
 Dit apparaat heeft een LCD en 1 druktoets om Energies, V, I, PF, F, P te lezen. Het ontwerp en de fabricage van deze meter voldoen aan de vereisten van norm EN 50470-3.

Productpresentatie

LCD scherm:



Energiregister (kWh), niet opnieuw instelbaar



Energie-import (consumptie →)
 Energie-export (productie ←)

Symbolen

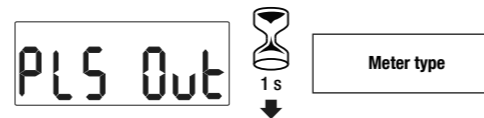
- ⊕ Een fase
- ⊠ Beschermd door dubbele isolatie (klasse II)
- ⏪ Backstop: apparaat om achteruitrijden te voorkomen

Commando's

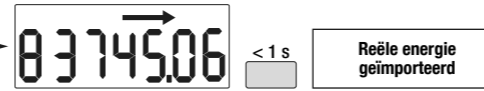
- ⏏ Command knop: **Korte druk:** Druk kort (<1 sec.) Op de knop en laat deze dan los. Gebruikt om door pagina's te bladeren.
- 5000 imp/kWh Optische metrologische LED

Opmerking:

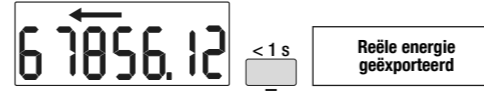
Als er ten minste 20 seconden lang op geen enkele knop wordt gedrukt, keert het display terug naar de hoofdpagina.



Hoofdpagina is afhankelijk van de huidige aanduiding van de stroomrichting ←→ met het bijbehorende algemeen en gedeeltelijke energieregisterscherm.



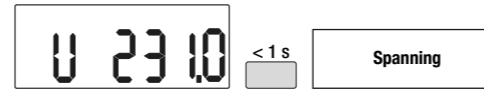
Reële energie geïmporteerd



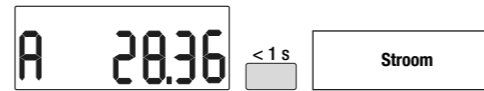
Reële energie geëxporteerd



Reëel vermogen (in dit geval: geïmporteerd →)



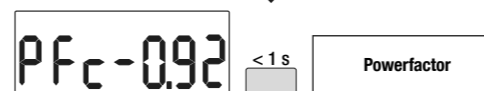
Spanning



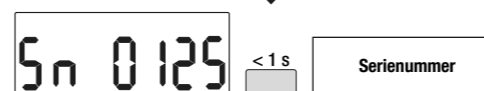
Stroom



Frequentie



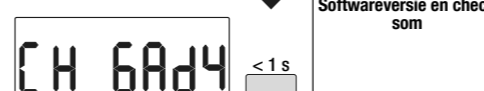
Powerfactor



Serienummer



Softwareversie en check som

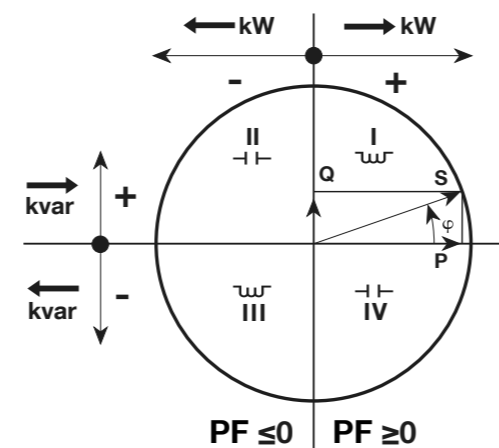


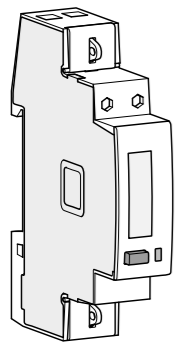
Softwareversie en check som



Displaytest

Powerfactor Conventie volgens IEC 62053-23





IT

Contatore di energia monofase, inserzione diretta 40 A

con dichiarazione di conformità MID e 1 impulso (S0) in uscita

La certificazione MID riguarda solo la energia attiva.

Istruzioni per l'utente

Dichiarazione di conformità UE:
<http://hgr.io/r/ecp140d>



Condizione di errore:

Quando il display mostra il messaggio **ERROR 2** o **ERROR 3**, lo strumento ha un malfunzionamento e deve essere sostituito.

6LE005492Ad

ECP140D

Istruzioni per la sicurezza

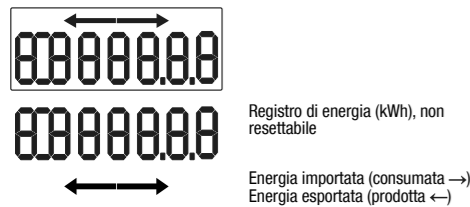
Questo dispositivo deve essere installato esclusivamente da un elettricista professionista secondo le norme di installazione locali applicabili. Non collegare o scollegare il prodotto quando è alimentato. Il suo utilizzo è consentito solo nei limiti indicati e dichiarati nelle istruzioni di installazione. Il dispositivo e le apparecchiature collegate possono essere danneggiati da carichi che superano i valori indicati.

Principio di funzionamento

Questo contatore misura l'energia attiva utilizzata in un'installazione elettrica. Solo il registro di energia attiva totale può essere utilizzato per la fatturazione in base alla direttiva dello strumento di misura (MID).
 - Classe Energia Attiva B (secondo EN 50470)
 - Classe Potenza Attiva 1 (secondo IEC 62053-21 e IEC 61557-12)
 Questo dispositivo ha un display LCD e 1 pulsante per leggere Energia, V, I, PF, F, P. La progettazione e la fabbricazione di questo strumento sono conformi ai requisiti della norma EN 50470-3.

Presentazione del prodotto

Display LCD:



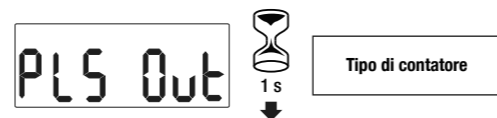
Symbols

- Monofase
- Protetto da doppio isolamento (Classe II)
- ⚡ Backstop: dispositivo anti inversione

Comandi

- ▭ Pulsante di comando:
Breve pressione: Premere brevemente (<1 sec.) Il pulsante e quindi rilasciarlo. Utilizzato per scorrere le pagine.
 LED metrologico ottico
- 5000 imp/kWh

Nota:
 Se non viene premuto alcun pulsante per almeno 20 secondi, il display torna alla pagina principale.



La pagina principale dipende dall'indicazione della direzione della potenza impostata ← → con il corrispondente display del registro di energia globale e parziale.



Fattore di potenza
 Convenzione secondo IEC 62053-23

