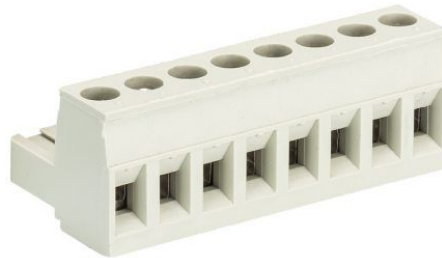


Fiche produit

Article n° 25.340.5153.0

Connecteur PCB 8213 B / 21 OB

Barette à enfichage indirect, pas 5,08mm enfichage dans le sens du conducteur, raccordement par vis, 21 pôles, couleur gris, sans marquage, type 8213 B/21 OB



Article n°	25.340.5153.0
EAN	4015573190009
Unité de commande	50 Piece(s)

certificats/approbations

Données techniques
général

Espacement modulaire	5,08 mm
Type de connexion	Connexion à vis
processus de soudure	Aucun
Répartiteur compact	boîte
Nombre de pôles	21
Marquage	Aucun
Fixation	Aucun
Sens de branchement du connecteur	180°

Données techniques

Section transversale nominale	2,5 mm ²
Courant nominal	12 A
Catégorie de surtension I	1000 V
Catégorie de surtension II	400 V
Catégorie de surtension III	250 V
Tension nominale d'impulsion	4 kV
longueur de fil	6 mm

données de connection

Section minimum fil rigide	0,14 mm ²
Section maximum fil rigide	2,5 mm ²
Section minimum multi-brins	0,14 mm ²
Section maximum multi-brins	2,5 mm ²
longueur de fil	6 mm

Données techniques UL/CSA

Section traversante norme UL	22-12 AWG
Tension UL	300 V
Câblage actuel	15 A
Câblage d'usine actuelle	15 A
Section traversante norme CSA	22-12 AWG
Tension CSA	300 V

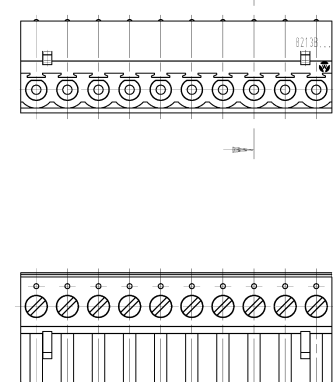
CSA actuel	15 A
------------	------

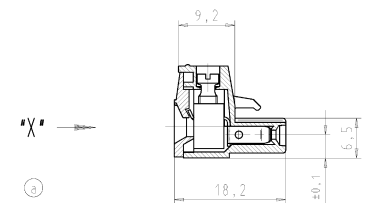
Autre

Type de matériau d'isolation	Thermo-plastique
Couleur	gris
hauteur	15 mm
profondeur	18,2 mm
matière Vis de fixation	CuSn
matière de base de contact	CuSn
matière surface de contact	Sn

Dessin technique

gezeichnete Ausführung:
10-polig
drawn version
10 poles





Ansicht "X"
view "X"

Further data see catalog
weiterer Daten siehe Katalog

Teile-Nr. part number	Pol-Z. pole	L	l1	Typ type
25.340.3253.F	2	10.16	5.08	8213 B/ 2 OB
25.340.3353.F	3	15.24	10.16	8213 B/ 3 OB
25.340.3453.F	4	20.32	15.24	8213 B/ 4 OB
25.340.3553.F	5	25.40	20.32	8213 B/ 5 OB
25.340.3653.F	6	30.48	25.40	8213 B/ 6 OB
25.340.3753.F	7	35.56	30.48	8213 B/ 7 OB
25.340.3853.F	8	40.64	35.56	8213 B/ 8 OB
25.340.3953.F	9	45.72	40.64	8213 B/ 9 OB
25.340.4053.F	10	50.80	45.72	8213 B/10 OB
25.340.4153.F	11	55.88	50.80	8213 B/11 OB
25.340.4253.F	12	60.96	55.88	8213 B/12 OB
25.340.4353.F	13	66.04	60.96	8213 B/13 OB
25.340.4453.F	14	71.12	66.04	8213 B/14 OB
25.340.4553.F	15	76.20	71.12	8213 B/15 OB
25.340.4653.F	16	81.28	76.20	8213 B/16 OB
25.340.4753.F	17	86.36	81.28	8213 B/17 OB
25.340.4853.F	18	91.44	86.36	8213 B/18 OB
25.340.4953.F	19	96.52	91.44	8213 B/19 OB
25.340.5053.F	20	101.60	96.52	8213 B/20 OB
25.340.5153.F	21	106.68	101.60	8213 B/21 OB
25.340.5253.F	22	111.76	106.68	8213 B/22 OB
25.340.5353.F	23	116.84	111.76	8213 B/23 OB
25.340.5453.F	24	121.92	116.84	8213 B/23 OB

<table border="1"> <tr> <th>F</th> <th>Farbe/colour</th> <th>6</th> <th>blau/blue</th> </tr> <tr> <th>0</th> <td>grau/grey</td> <th>7</th> <td>grün/green</td> </tr> <tr> <th>1</th> <td>schwarz/black</td> <th>8</th> <td>gelb/yellow</td> </tr> <tr> <th>2</th> <td>weiß/white</td> <th>9</th> <td>orange</td> </tr> <tr> <th>3</th> <td></td> <td></td> <td></td> </tr> <tr> <th>4</th> <td>braun/brown</td> <td></td> <td></td> </tr> </table>	F	Farbe/colour	6	blau/blue	0	grau/grey	7	grün/green	1	schwarz/black	8	gelb/yellow	2	weiß/white	9	orange	3				4	braun/brown			<table border="1"> <tr> <th>2011</th> <th>Top/Bach</th> <th>Name</th> <th>Zeichnung Nr./Drawing No.</th> <th>Blatt/Sheet</th> <th>von/of</th> </tr> <tr> <td>2011</td> <td>01.01</td> <td>Schnitt 1</td> <td>25.340.3253.0</td> <td>01K</td> <td>1</td> </tr> </table>	2011	Top/Bach	Name	Zeichnung Nr./Drawing No.	Blatt/Sheet	von/of	2011	01.01	Schnitt 1	25.340.3253.0	01K	1
F	Farbe/colour	6	blau/blue																																		
0	grau/grey	7	grün/green																																		
1	schwarz/black	8	gelb/yellow																																		
2	weiß/white	9	orange																																		
3																																					
4	braun/brown																																				
2011	Top/Bach	Name	Zeichnung Nr./Drawing No.	Blatt/Sheet	von/of																																
2011	01.01	Schnitt 1	25.340.3253.0	01K	1																																
<table border="1"> <tr> <th>Material</th> <th>2011</th> <th>Top/Bach</th> <th>Name</th> <th>Zeichnung Nr./Drawing No.</th> <th>Blatt/Sheet</th> <th>von/of</th> </tr> <tr> <td>8213 B/ OB</td> <td>2011</td> <td>01.01</td> <td>Schnitt 1</td> <td>25.340.3253.0</td> <td>01K</td> <td>1</td> </tr> </table>	Material	2011	Top/Bach	Name	Zeichnung Nr./Drawing No.	Blatt/Sheet	von/of	8213 B/ OB	2011	01.01	Schnitt 1	25.340.3253.0	01K	1	<table border="1"> <tr> <th>Material</th> <th>2011</th> <th>Top/Bach</th> <th>Name</th> <th>Zeichnung Nr./Drawing No.</th> <th>Blatt/Sheet</th> <th>von/of</th> </tr> <tr> <td>8213 B/ OB</td> <td>2011</td> <td>01.01</td> <td>Schnitt 1</td> <td>25.340.3253.0</td> <td>01K</td> <td>1</td> </tr> </table>	Material	2011	Top/Bach	Name	Zeichnung Nr./Drawing No.	Blatt/Sheet	von/of	8213 B/ OB	2011	01.01	Schnitt 1	25.340.3253.0	01K	1								
Material	2011	Top/Bach	Name	Zeichnung Nr./Drawing No.	Blatt/Sheet	von/of																															
8213 B/ OB	2011	01.01	Schnitt 1	25.340.3253.0	01K	1																															
Material	2011	Top/Bach	Name	Zeichnung Nr./Drawing No.	Blatt/Sheet	von/of																															
8213 B/ OB	2011	01.01	Schnitt 1	25.340.3253.0	01K	1																															