

Wiser Micro Module Light Switch

Device user guide

Information about features and functionality of the device.

03/2023

Legal Information

The Schneider Electric brand and any trademarks of Schneider Electric SE and its subsidiaries referred to in this guide are the property of Schneider Electric SE or its subsidiaries. All other brands may be trademarks of their respective owners.

This guide and its content are protected under applicable copyright laws and furnished for informational use only. No part of this guide may be reproduced or transmitted in any form or by any means (electronic, mechanical, photocopying, recording, or otherwise), for any purpose, without the prior written permission of Schneider Electric.

Schneider Electric does not grant any right or license for commercial use of the guide or its content, except for a non-exclusive and personal license to consult it on an "as is" basis. Schneider Electric products and equipment should be installed, operated, serviced, and maintained only by qualified personnel.

As standards, specifications, and designs change from time to time, information contained in this guide may be subject to change without notice.

To the extent permitted by applicable law, no responsibility or liability is assumed by Schneider Electric and its subsidiaries for any errors or omissions in the informational content of this material or consequences arising out of or resulting from the use of the information contained herein.

Table of Contents

Safety information	4
Wiser Micro Module Light Switch	5
For your safety	5
About the device	6
Installing the device	6
Testing the device	6
Pairing the device	6
Configuring the device	7
Selecting a location for the device	7
Renaming the device	8
Identifying the device	9
Using the device	10
Manual operation	10
Turning On/Off Puck using app	10
Setting up a schedule	10
Creating a moment	11
Creating an automation	13
Removing the device	20
Resetting the device	20
LED indication	21
Troubleshooting	21
Technical data	22

Safety information

Important information

Read these instructions carefully and look at the equipment to become familiar with the device before trying to install, operate, service, or maintain it. The following special messages may appear throughout this manual or on the equipment to warn of potential hazards or to call attention to information that clarifies or simplifies a procedure.



The addition of either symbol to a “Danger” or “Warning” safety label indicates that an electrical hazard exists which will result in personal injury if the instructions are not followed.



This is the safety alert symbol. It is used to alert you to potential personal injury hazards. Obey all safety messages that accompany this symbol to avoid possible injury or death.

DANGER

DANGER indicates a hazardous situation which, if not avoided, **will result in** death or serious injury.

Failure to follow these instructions will result in death or serious injury.

WARNING

WARNING indicates a hazardous situation which, if not avoided, **could result in** death or serious injury.

CAUTION

CAUTION indicates a hazardous situation which, if not avoided, **could result in** minor or moderate injury.

NOTICE

NOTICE is used to address practices not related to physical injury.

Wiser Micro Module Light Switch



CCT5011-0002W

For your safety

⚡⚠ DANGER

HAZARD OF ELECTRIC SHOCK, EXPLOSION, OR ARC FLASH

Safe electrical installation must be carried out only by skilled professionals. Skilled professionals must prove profound knowledge in the following areas:

- Connecting to installation networks.
- Connecting several electrical devices.
- Laying electric cables.
- Safety standards, local wiring rules and regulations.

Failure to follow these instructions will result in death or serious injury.

⚠ DANGER

HAZARD OF ELECTRIC SHOCK

- Make sure that the terminal connection area does not come in contact with the metallic parts of any device installed in the same location.
- Do not short the outputs to neutral.
- The switch contact and live conductor connection must be separated from one another by a 240 VAC basic insulation.

Failure to follow these instructions will result in death or serious injury.

⚠ WARNING

HAZARD OF ELECTRIC SHOCK

- Observe the regulations for working on live parts.
- Only actuate the device buttons using insulated auxiliary equipment that meets the requirements of EN 60900.

Failure to follow these instructions can result in death, serious injury, or equipment damage.

About the device

The Wiser Micro Module Light Switch (hereinafter referred to as **Puck**) combines the advantages of smart switch functionality with ordinary mechanical push-button switches. It transforms a conventional switch into a connected device that can be controlled from the switch or through the Wiser app. It can switch ohmic, inductive or capacitive loads.

NOTE: Do not control any devices that depend on a permanent power supply.

Additional features:

- Remote controlled with maximum of 10 mechanical push-buttons.
- Setting a time schedule.

Installing the device

Refer to the installation instructions supplied with this product.

Testing the device

Before using the Puck, manually test the Puck and make sure that it works when connected to the devices.

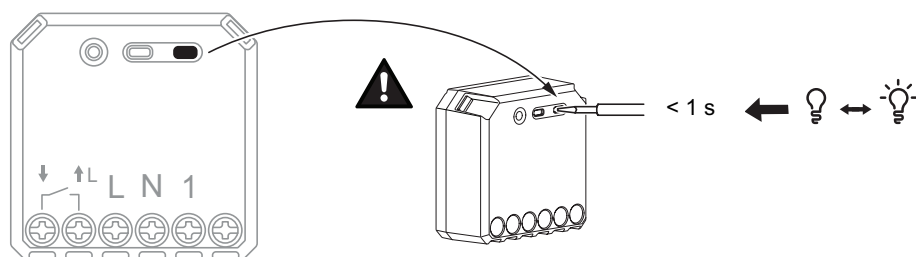
⚠ WARNING

HAZARD OF ELECTRIC SHOCK

- Observe the regulations for working on live parts.
- Only actuate the device buttons using insulated auxiliary equipment that meets the requirements of EN 60900.

Failure to follow these instructions can result in death, serious injury, or equipment damage.

Short press the test button once, the connected device turns On/Off.



Pairing the device

Using the Wiser Home app, pair your Puck with the **Wiser Hub** to access and control the Puck.

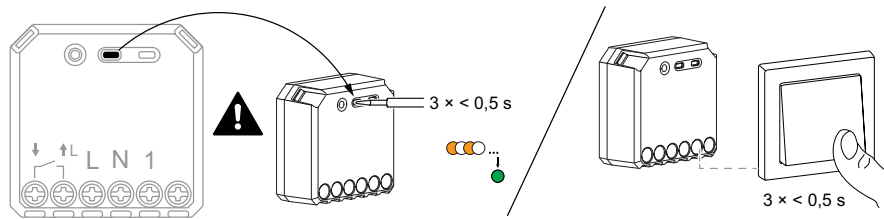
To pair the Puck:

1. On the Home page, tap .
2. Tap **Devices** >  and tap **Lights** > **Micromodule** > **Next**.

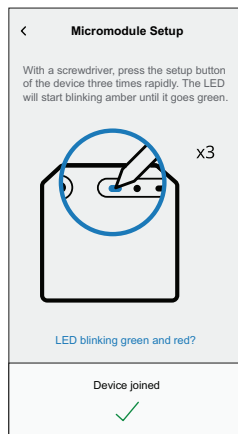
NOTE: The next screen shows the joining process of **Puck**.

3. Select any one of the options to add the device:
 - Short press the setup/reset button 3 times on the Puck with a screwdriver and make sure the LED blinks amber.
 - Short press the push button 3 times.

NOTE: If the puck is located behind the push button, the status LED is not visible.



4. Wait for a few seconds until the LED turns green. You can also see in the app that the device is joined.




5. Tap **Next** to enter the name of the device and assign the device to a new room or an existing room.
The **Puck** is now listed under **All devices**.

Configuring the device

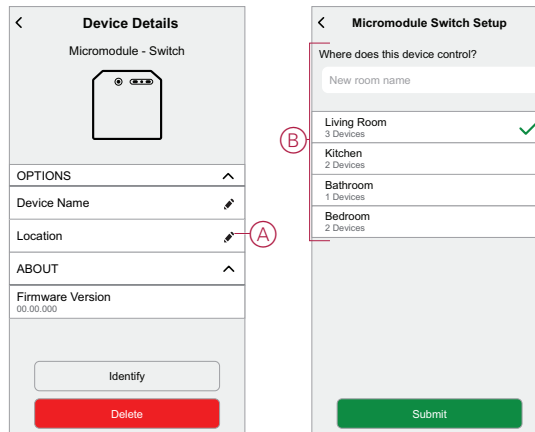
Selecting a location for the device

Using the Wiser Home app, add the Puck to any room (such as living room, bedroom, kitchen etc).

1. On the Home page, tap .

2. Tap **Devices > Micromodule Switch > Location (A)** to assign the puck to an existing room or a new room (B) and tap **Submit**.

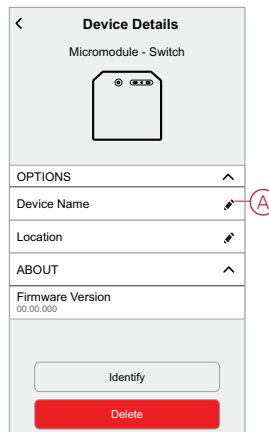
NOTE: Micromodule Switch is the name given to the device by the user. Any name can be assigned when pairing with the Wiser hub.



Renaming the device

Rename the device using the Wiser Home app.

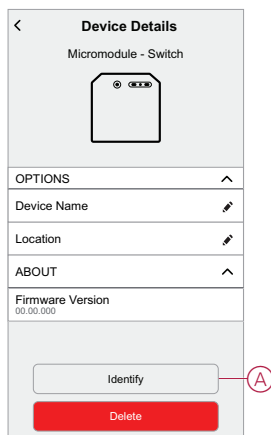
1. On the Home page, tap .
2. Tap **Devices > Micromodule Switch > Device Name (A)** to rename the device.



Identifying the device

Using the Wiser Home app, identify the Puck among the devices available in a home.

1. On the Home page, tap .
2. Tap **Devices > Micromodule Switch > Identify (A)**.



The status LED blinks red and connected devices blinks On/Off, upon successful identification of the Puck.

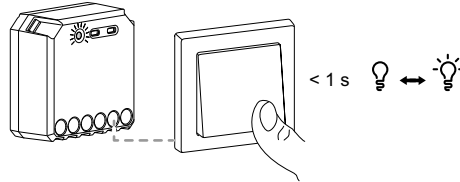
3. Tap **OK** to finish identifying the device.

Using the device

Manual operation

When the puck is connected to a mechanical push button, the connected devices can be controlled manually by short pressing the push-button rocker.


NOTE: Since the puck is installed inside the wall box, the status LED is not visible while using the puck.

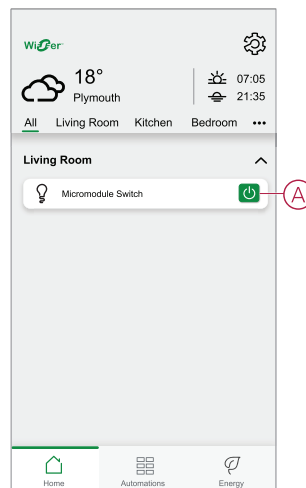


Turning On/Off Puck using app

Using the Wiser Home app, you can turn On/Off the Puck remotely.

To turn On/Off the Puck using the app:



1. Go to the Home page, tap **All** and find the device.
2. Tap  (A) to turn on/off puck.



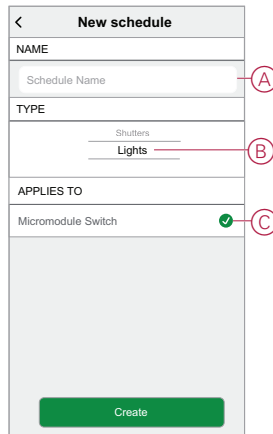
Setting up a schedule

The devices can be fully controlled by schedule. Once the schedule is set, the devices operates at a given time.

To create a schedule:

1. On the **Home** page, tap .
2. Go to **Schedules** >  to create a schedule.
3. Enter the name of the schedule (A).
4. In the **TYPE** menu, select **Lights** (B).
5. In the **APPLIES TO** menu, select **Micromodule Switch** (C) from the listed devices.

6. Tap **Create** to setup events.





7. Tap **+** to add an event such as **STATE** (lights On/Off) and **WHEN** (sunrise/ sunset or specific time range).

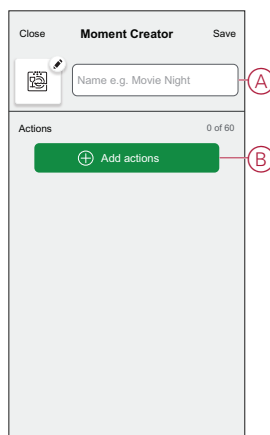
NOTE: Tap **+** to copy the schedule from one day to another day or from one room to another room.

8. Tap **Set** to save the schedule.

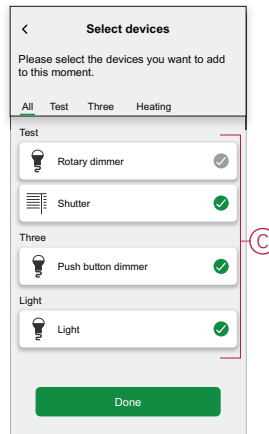
Creating a moment

Moment allows you to group multiple actions that are usually performed together. By using the Wiser Home app, you can create moments based on your needs. To create a moment:

1. On the **Home** page, tap .
2. Go to **Moments** > **+** to create a moment.
3. Enter the name of the moment (A).
TIP: You can choose the cover image that best represents your moment by tapping .
4. Tap **Add actions** (B) to select the list of devices.




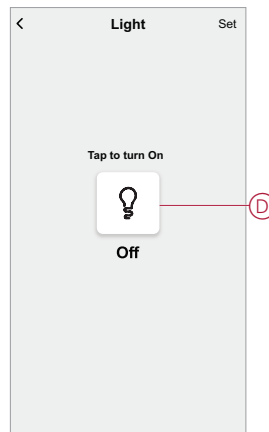
5. In the **Add actions** menu, you can select the devices (C).



6. Once all the device are selected, tap **Done**.

7. On the **Moment creator** page, tap on the device to set the condition. For example, select micromodule switch.

– Tap  (D) to turn on.





When the desired condition is set, tap **Set**.

8. Once all conditions are set, tap **Save**.

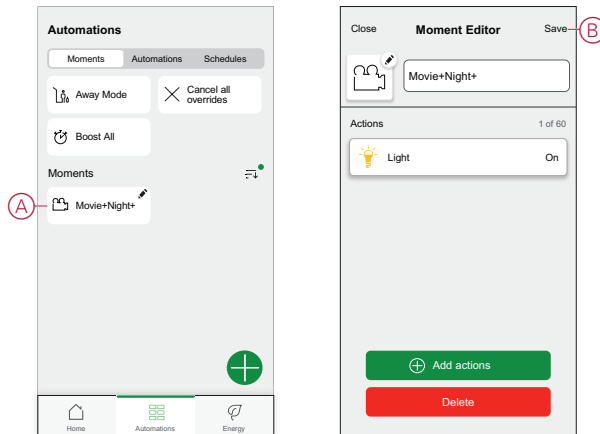
Once the moment is saved, it is visible on the **Moments** tab. You can tap on the moment to enable it.

Editing a moment

To edit a moment:



1. On the **Home** page, tap .
2. Go to **Moments**, locate the moment you want to edit and tap  (A).

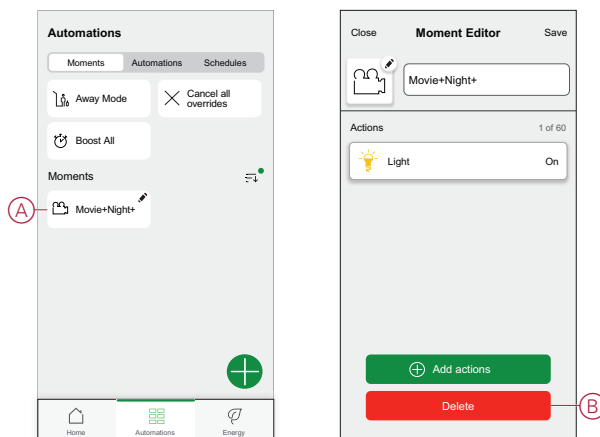
- On the **Moment Editor** page, you can tap each item to change the settings and tap **Save** (B).



Deleting a moment

To delete a moment:

- On the **Home** page, tap .
- Go to **Moments**, locate the moment you want to delete and tap  (A).
- On the Moment Editor page, tap **Delete** (B) and tap **Ok**.



Creating an automation

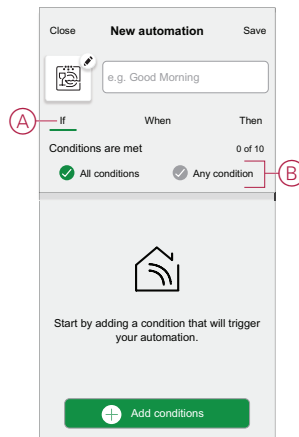
An automation allows you to group multiple actions that are usually done together, triggered automatically or at scheduled times. By using the Wiser app, you can create automations based on your needs.

To create an automation:

- On the **Home** page, tap .
- Go to **Automation** >  to create an automation.

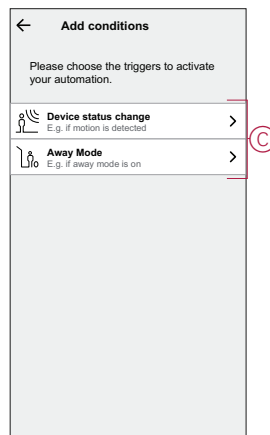
3. Tap **If** (A) and select any of the following conditions (B):


- **All conditions:** This triggers an action only when all conditions are met.
- **Any condition:** This triggers an action when at least one condition is met.

4. Tap **Add conditions** and select any of the following (C):

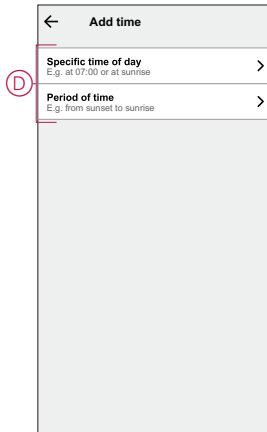
- **Device status change:** Select a device to enable automation.
- **Away Mode: Enable / Disable** away mode to trigger an action.


TIP: Away mode can also be used as a trigger to turn off the lights, dimmer or closing the shutter etc. For more information refer to *Away mode*.

**NOTE:** .

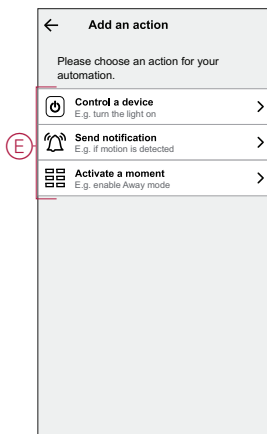
- Max. 10 conditions can be added.
- To remove condition, swipe left and then tap .

5. To set a specific time for your automation, tap **When > Add time** and select any of the following (D):
- **Specific time of the day: Sunrise, Sunset, Custom**
 - **Period of time: Daytime, Night time, Custom**

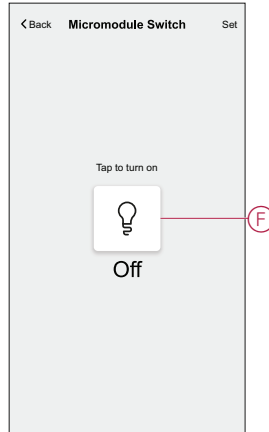


NOTE: To remove a specific time, swipe left and tap .


6. To add an action, tap **Then > Add an action** and select any of the following (E):
- **Control a device:** Select a devices that you want to trigger.
 - **Send notification:** Turn on the notification for the automation.
 - **Activate a moment:** Select the moment that you want to trigger.




7. Tap **Control a device** > **Micromodule Switch**, then tap  (F) to turn on/off, then tap **Set**.

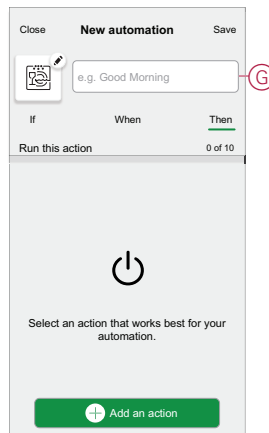


NOTE:

- Max. 10 actions can be added.
- To remove an action, swipe left on the action and tap .


8. Enter the automation name (G) .

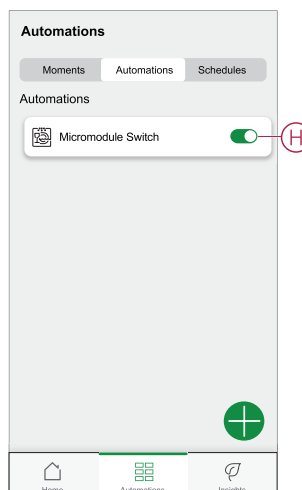
You can choose the cover image that represents your automation by tapping .



9. Tap **Save**.


Once the automation is saved, it is visible on the **Automation** tab.

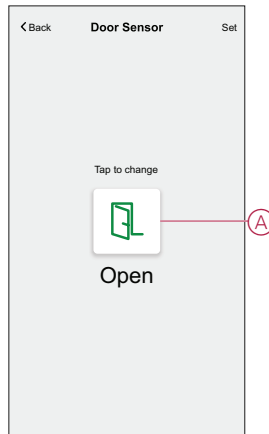
Using the  (H) you can enable or disable the automation.



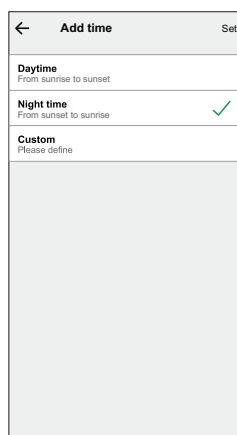
Example of an automation

This demonstration shows you how to create an automation to turn on the light switch when the Door is open during Night time.

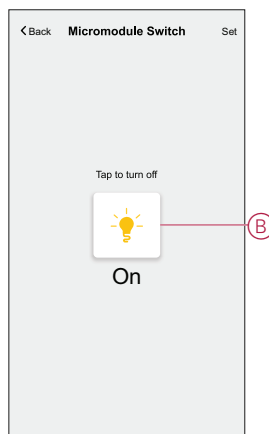
1. Go to **Automation** >  to create an automation.
2. To add a condition, tap **Add Condition** > **Device status change** > **Door Sensor**, tap (A) to **Open**, then tap **Set**.



3. Read the information and tap **OK**.
4. To set the time, tap **When** > **Add time** > **Period of time** > **Night time** > **Set**.




5. To add an action, tap **Then** > **Add an action** > **Control a device** > **Micromodule Switch**, tap (B) to turn on, then tap **Set**.



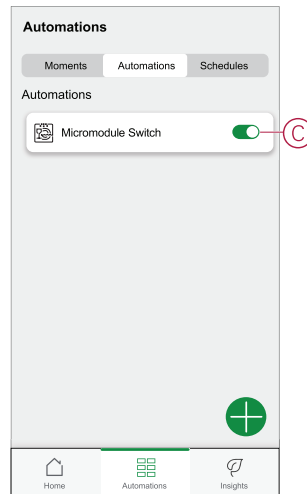
6. Read the information and tap **OK**.


7. Enter the name of the automation.

TIP: You can choose the cover image that represents your automation by tapping .

8. Tap **Save**.


Once the automation is saved, it is visible on the **Automation** tab.

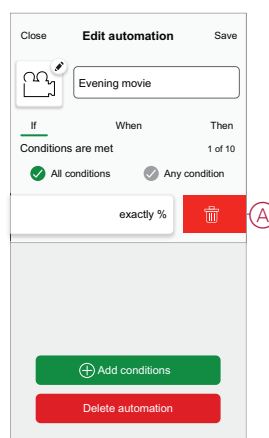


NOTE: You can enable or disable automations on the **Automation** tab by using  (C).

Editing an automation

To edit an automation:


1. On the **Home** page, tap .
2. Go to **Automation**, tap the automation you want to edit.
3. On the **Edit automation** page, you can:
 - Change the icon.
 - Rename the automation.
 - Change/Delete the condition or action.
4. Remove the Condition or Action by swiping it to the left and tapping the **bin** (A).

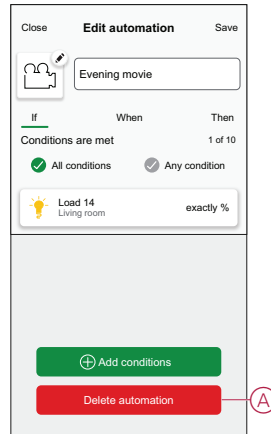


5. Add a new condition or action and then tap **Save**.

Deleting an automation

To delete an automation:

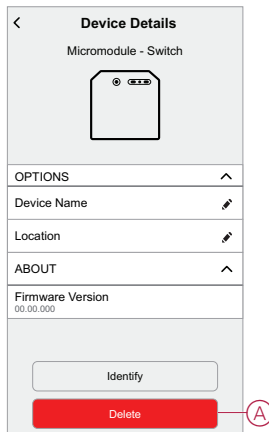
1. On the **Home** page, tap .
2. Go to **Automation**, tap the automation you want to delete .
3. On the Edit automation page, tap **Delete Automation (A)** and tap **Ok**.



Removing the device

Using the Wiser app, you can remove the Puck from the system.
To remove the device:

1. On the Home page, tap .
2. Tap **Devices > Micromodule Switch > Delete (A)**.



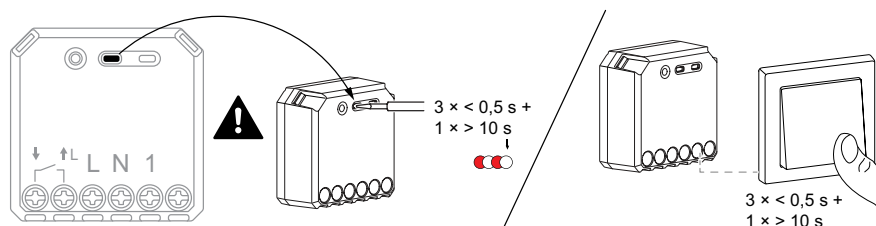
NOTE:

- Removing the device will reset the Puck. After reset the LED turns amber indicating that the Puck is ready to pair with another network.
- If there is a problem while pairing or resetting the Puck, refer to Resetting the device, page 20.

Resetting the device



Select any one of the options to reset the device to factory default mode:

- Short press the Setup/Reset button 3 times and then long press the Setup/Reset button once for 10 s on the puck with a screwdriver.
- Short press the push button 3 times and then long press the push button once for 10 s.





LED indication

Pairing the device




User Action	LED Indication	Status
Short press the setup/reset button or push button 3 times.	LED blinks amber once per second. 	Pairing mode is active for 30 seconds. When pairing is completed, LED displays green for a few seconds before turning Off. 

Resetting the device


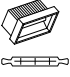


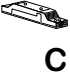




User Action	LED Indication	Status
Short press the setup/reset button or push button 3 times and hold it down once for > 10 s or < 20 s.	LED blinks red once per second. 	The device is in reset mode. The device then restarts and LED turns amber indicating that the device is ready for pairing. 

Troubleshooting

Error	Possible cause	Solution
The device is not ready to pair after the device is removed from the app.	The device is not reset correctly.	Reset to factory default settings, refer to Resetting the device, page 20

Symptom	Possible cause	Solution
The device is not able to connect with the Hub. After pressing 3 times, the device LED blinks green/red for 30 s.  NOTE: This does not apply to newer Zigbee® model.	Pairing mode has changed.	<ol style="list-style-type: none"> 1. Factory reset the device. 2. After reset, press top right corner of the switch for 4 times and then hold for 20 s, until the LED blinks red.  The device should reboot into the correct mode. 3. After reboot, press 3 times on top right corner of the switch to initiate pairing mode. LED flashes orange. 

Technical data

Nominal power rating for load type		
	Incandescent lamp	2200 W
	Halogen lamp	2000 W
	Iron core transformer	500 VA
	Motor	1000 VA
	Electronic step-down converter	1050 VA 10 A, 140 µF
	Fluorescent lamp	100 W
	LED	200 W
	Boiler	2000 W
	Room heater	1500 W

Nominal voltage	AC 220-240 V, 50/60 Hz
Nominal current	10 AX
Switching channel	1, dry contact
Standby	Max. 0.3 W
Operating Temperature	0 °C to 35 °C
Neutral conductor	Required
Connecting terminals	Max. 2 x 2.5 mm ² , solid or stranded types
Extension connection	Max. 10 mechanical push buttons
Length of all cable sections	Max. 50 m for 3-wire NYM cable
Fuse protection	16 A circuit breaker
Operating frequency	2405 - 2480 MHz
Max. radio-frequency power transmitted	<10 mW
IP rating	IP20
Product dimensions (H x W x D)	43 x 43 x 22 mm
Communication protocol	Zigbee 3.0 certified

Compliance

Compliance information for Green Premium products

Find and download comprehensive information about Green Premium products, including RoHS compliance and REACH declarations as well as Product Environmental Profile (PEP) and End-of-Life instructions (EOLI).

General information about Green Premium products

Click the link below to read about Schneider Electric's Green Premium product strategy.

<https://www.schneider-electric.com/en/work/support/green-premium/>

Find compliance information for a Green Premium product

Click the link below to search for a product's compliance information (RoHS, REACH, PEP and EOLI).

NOTE: You will need the product reference number or product range to perform the search.

<https://www.reach.schneider-electric.com/CheckProduct.aspx?cskey=ot7n66yt63o1xblflyfj>

Trademarks

This guide makes reference to system and brand names that are trademarks of their relevant owners.

- Zigbee is a trademark of the Connectivity Standard Alliance™.
- Apple® and App Store® are brand names or registered trademarks of Apple Inc.
- Google Play™ Store and Android™ are brand names or registered trademarks of Google Inc.
- Wi-Fi® is a registered trademark of Wi-Fi Alliance®.
- Wiser™ is a trademark and the property of Schneider Electric, its subsidiaries and affiliated companies.

Other brands and registered trademarks are the property of their respective owners.

Schneider Electric
35 rue Joseph Monier
92500 Rueil Malmaison
France

+ 33 (0) 1 41 29 70 00

www.se.com

As standards, specifications, and design change from time to time,
please ask for confirmation of the information given in this publication.

© 2021 – 2023 Schneider Electric. All rights reserved.

DUG_Micro Module Light Switch_WH-01