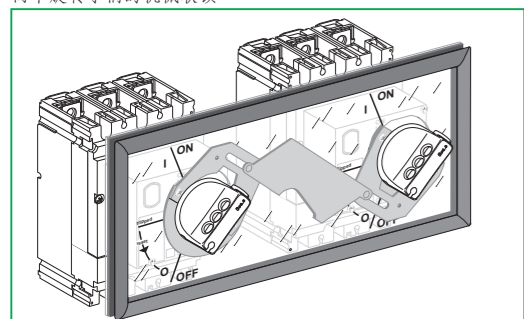


Mechanical interlock for 2 rot handles
Interruillage méca 2 cdes rotative
Interclavamiento mecánico 2 mando rota
两个旋转手柄的机械联锁



Schneider Electric Industries SAS
35, rue Joseph Monier
CS 90323
F - 92506 Rueil Malmaison Cedex
www.schneider-electric.com



© 2016 Schneider Electric.
All rights reserved.

PLEASE NOTE
■ This device must be installed by a qualified electrician.
■ We cannot accept any responsibility for failure to follow the instructions provided in this document.
■ Read and understand the safety instructions accompanying this document before performing any procedure.

REMARQUE IMPORTANTE
■ L'installation de cet appareil doit être effectuée par des professionnels de l'électricité.
■ Le non-respect des indications de la présente notice ne saurait engager la responsabilité du constructeur.
■ Lisez attentivement les consignes de sécurité jointes à ce document avant toute opération.

TENGA EN CUENTA
■ La instalación y mantenimiento de este aparato sólo debe ser realizado por electricistas profesionales.
■ El fabricante no se hace responsable en caso de no cumplir con las indicaciones expuestas en este aviso.
■ Lea atentamente las indicaciones de seguridad adjuntas a este documento antes de realizar cualquier operación.

请注意
■ 本设备只能由专业电气人员进行安装。
■ 施耐德电气对因未遵循本资料而产生的后果不承担责任。
■ 执行每一步骤前，请阅读并理解本资料所提供的安全说明。

1 commande rotative directe / direct rotary handle / 直接旋转手柄

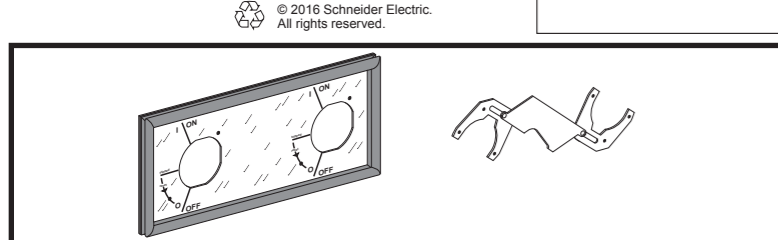
	NSX 100→NSX 250 NSF 150-NSF 250	NSX 400-630 NSJ 400-600
A	9,25 mm 0.36 in.	5 mm 0.2 in.
B	9 mm 0.35 in.	24,6 mm 0.97 in.
C	75 mm 2.95 in.	74,5 mm 2.93 in.
D	150 mm 5.90 in.	175 mm 6.89 in.
E	75,5 mm 2.97 in.	100 mm 3.94 in.
F	295 mm 11.61 in.	386 mm 15.2 in.
G	156 mm 6.14 in.	210 mm 8.27 in.

3

4 FZ
M3 x 10
1 Nm
8.6 lb-in

TEST

1
2
3
4
5



x 2		x 2	
CBLZS M3 x 6	x 4		Ø 3 mm
FZ M3 x 10	x 4		CBLZS M4 x 10
FZ M3 x 30	x 2		Ø 4 mm

x 1 Pozidriv n° 2 ou plat slotted screwdriver / Pozidriv 2号螺丝刀 / 一字螺丝刀

mm: 2,5
in.: 3/32

2

2 CBLZS
M3 x 6
1 Nm
8.6 lb-in

4

2 FZ
M3 x 30
1 Nm
8.6 lb-in

2 CBLZS
M3 x 6
1 Nm
8.6 lb-in

1 commande rotative prolongée / extended rotary handle / 延伸旋转手柄

	NSX 100-250 NSF 150-NSF 250	NSX 400-630 NSJ 400-600
A	9,25 mm 0.36 in.	5 mm 0.2 in.
B	9 mm 0.35 in.	24,6 mm 0.97 in.
C	156 mm 6.14 in.	210 mm 8.27 in.

2 NSX 100-250, NSX 400-630

4 CBLZS
M3 x 6
1 Nm
8.6 lb-in

3

4 FZ
M3 x 10
1 Nm
8.6 lb-in

4

2 CBLZS
M4 x 10
1,5 Nm
13 lb-in

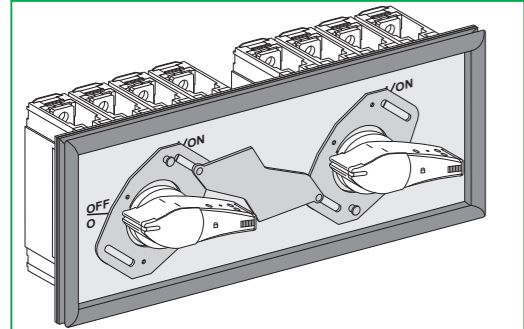
1 Nm
9 lb-in

TEST

1
2
3
4
5

**Compact
INS 80-630**

Mechanical interlock for 2 rot handles
Interrouillage méca 2 cdes rotative
Interclavamiento mecánico 2 mando rota
两个旋转手柄的机械联锁



Schneider Electric Industries SAS
35, rue Joseph Monier
CS 30323
F - 92506 Rueil Malmaison Cedex
www.schneider-electric.com



© 2016 Schneider Electric.
All rights reserved.

**PLEASE READ
INS 80-630**

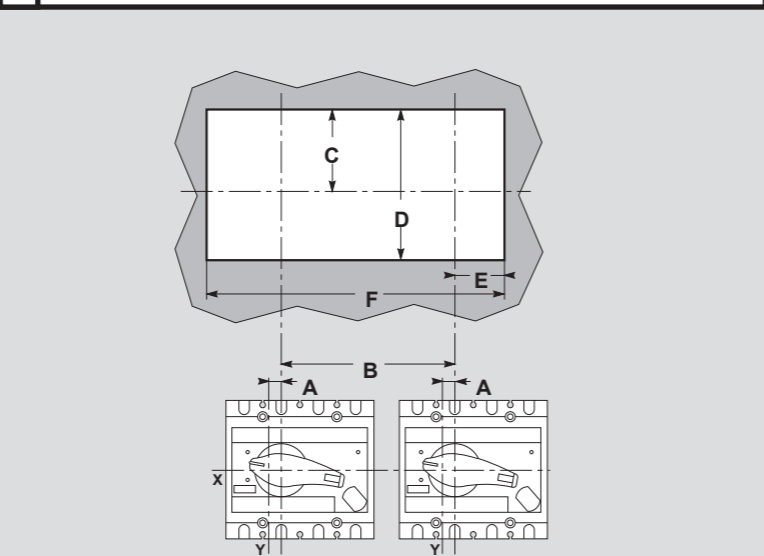
This device must be installed by a qualified electrician.
We cannot accept any responsibility for failure to follow the instructions provided in this document.
Read and understand the safety instructions accompanying this document before performing any procedure.

REMARQUE IMPORTANTE
L'installation de cet appareil doit être effectuée par des professionnels de l'électricité.
Le non-respect des indications de la présente notice ne saurait engager la responsabilité du constructeur.
Lisez attentivement les consignes de sécurité jointes à ce document avant toute opération.

TENGA EN CUENTA
La instalación y mantenimiento de este aparato sólo debe ser realizado por electricistas profesionales.
El fabricante no se hace responsable en caso de no cumplir con las indicaciones expuestas en este aviso.
Lea atentamente las indicaciones de seguridad adjuntas a este documento antes de realizar cualquier operación.

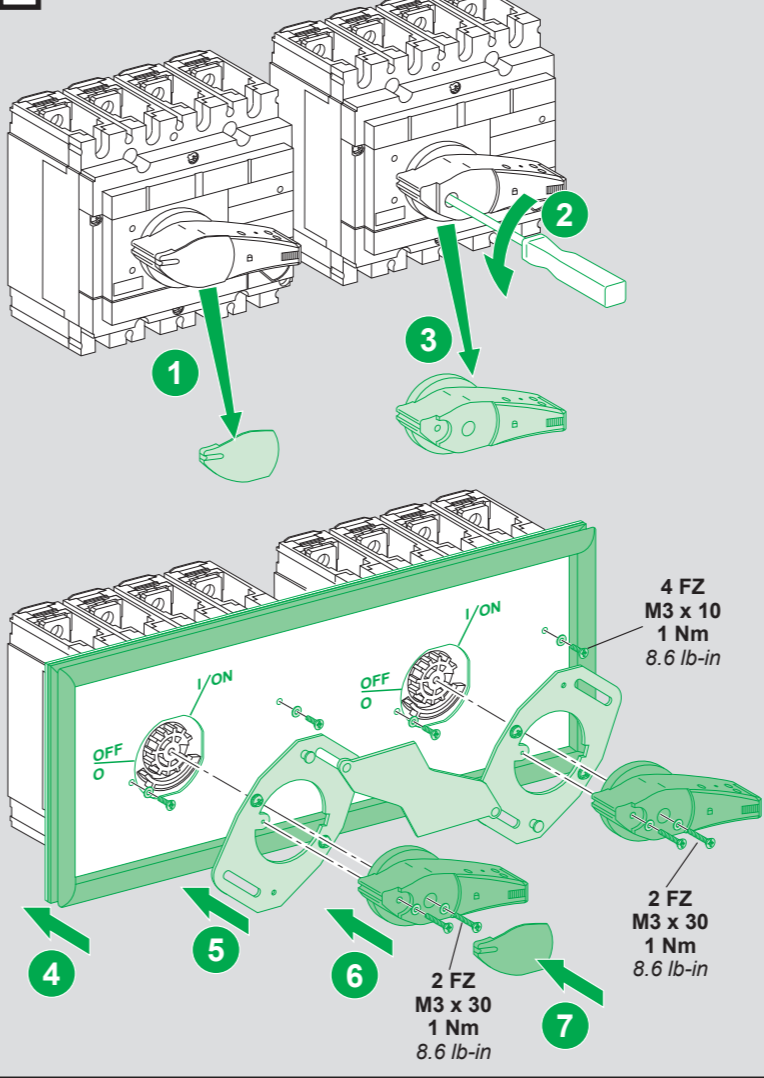
请注意
本设备只能由专业电气人员进行安装。
施耐德电气对因未遵循本资料而产生的后果不承担责任。
执行每一步骤前，请阅读并理解本资料所提供的安全说明。

1 commande rotative directe / direct rotary handle / 直接旋转手柄

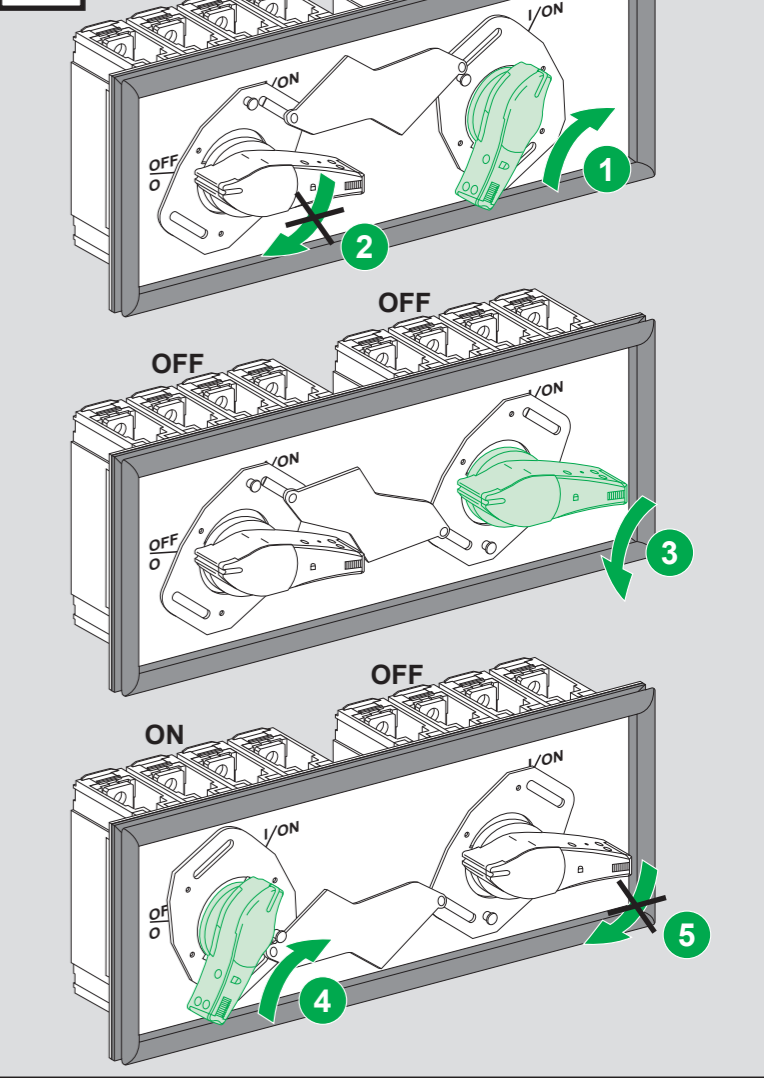


	INS250	INS630
A	17,5 mm 0.69 in.	22,5 mm 0.89 in.
B	156 mm 6.14 in.	210 mm 8.27 in.
C	75 mm 2.95 in.	74,5 mm 3.44 in.
D	150 mm 5.90 in.	175 mm 6.89 in.
E	75,5 mm 2.95 in.	100 mm 3.94 in.
F	295 mm 11.61 in.	386 mm 15.2 in.

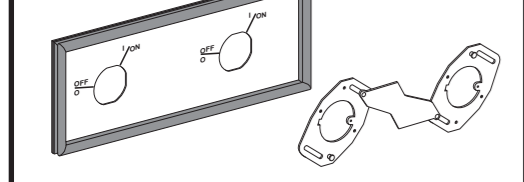
2



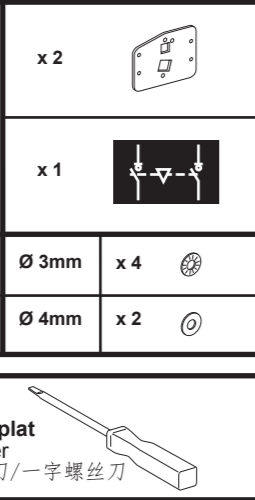
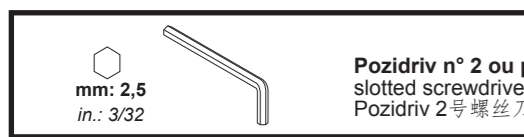
TEST



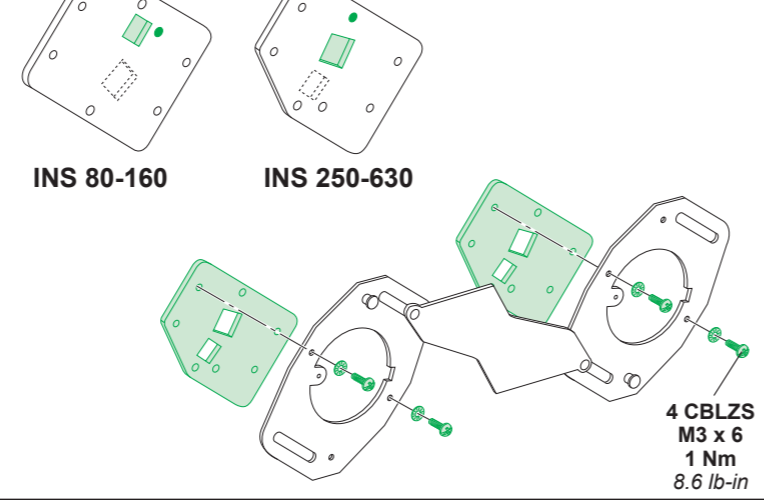
INS 250-630



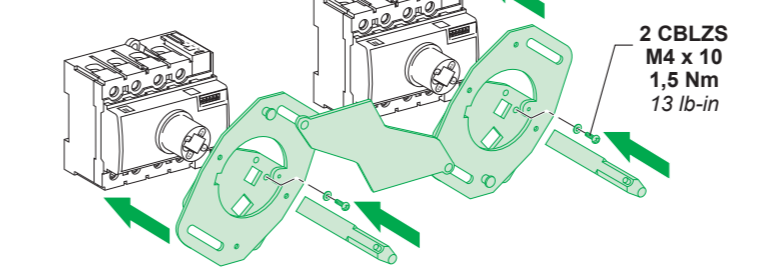
CBLZS M3 x 6	x 4	FZ M3 x 10	x 4	Ø 3mm	x 4
CBLZS M4 x 10	x 2	FZ M3 x 30	x 2	Ø 4mm	x 2



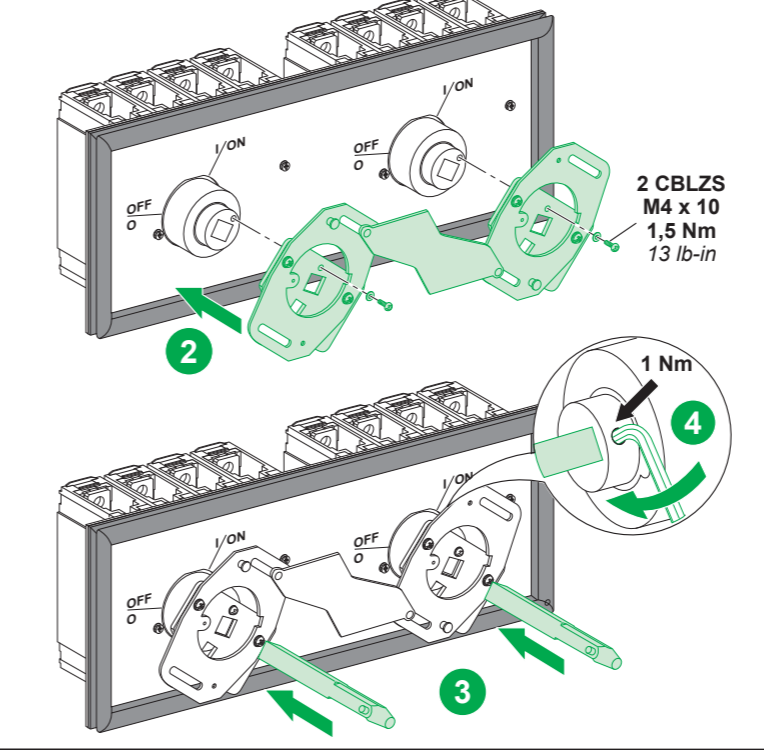
2



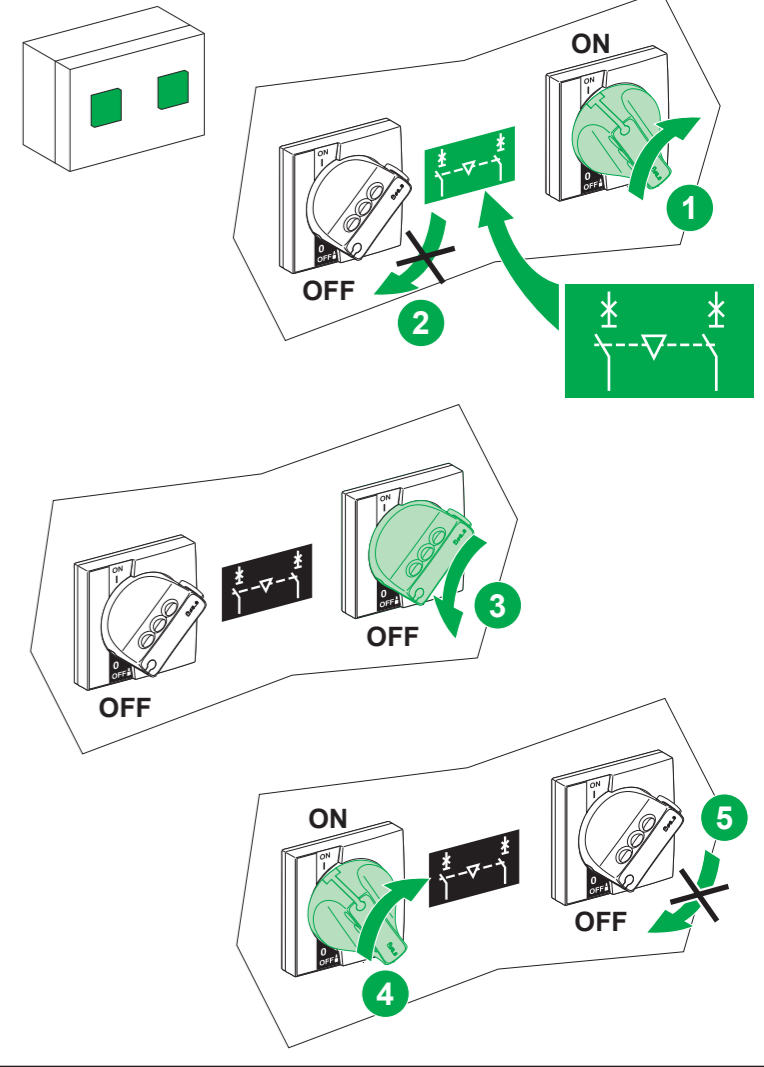
INS 80-160



INS 250-630



TEST

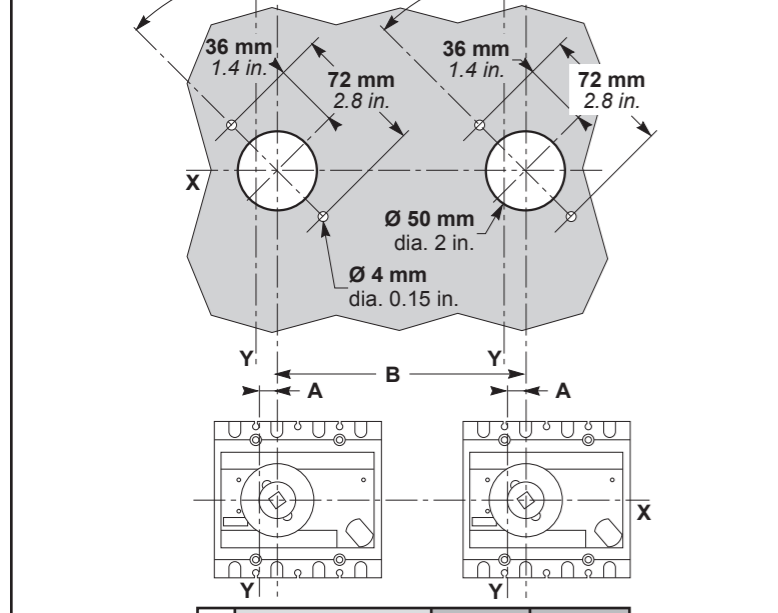


**commande rotative prolongée
extended rotary handle
延伸旋转手柄**



CBLZS M3 x 6	x 4	CBLZS M4 x 10	x 2	Ø 3mm	x 4
--------------	-----	---------------	-----	-------	-----

1 commande rotative prolongée / extended rotary handle / 延伸旋转手柄



	INS80	INS160	INS250	INS630
A	1 mm 0.04 in.	7,5 mm 0.30 in.	17,5 mm 0.69 in.	22,5 mm 0.89 in.
B	156 mm 6.14 in.	156 mm 6.14 in.	210 mm 8.27 in.	

3 INS 250-630

