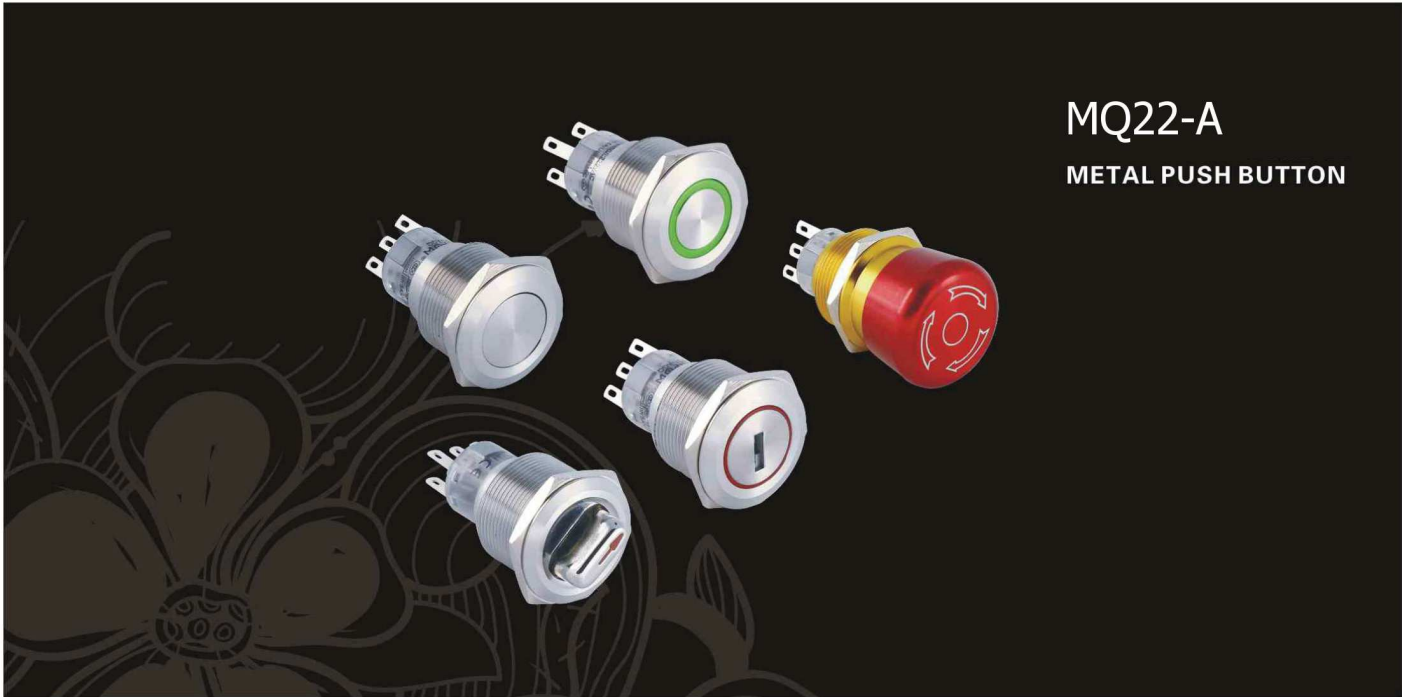


MQ22-A

METAL PUSH BUTTON



Part-number Description

MQ22-A	-	A	-	□	■	◇	/	◆●	/	△	/	▲	/	○
Code of series	Code Name	Contact Structure 11 1NO1NC 22 2NO2NC	Operation mode Z Latching type X Selector type Y Key-lock type TSB Emergency stop B type	Lamp type D Dot E Ring	◆ Operation position of selector and Key-lock type 2 Two position 3 Three position	Lamp color R red G green Y yellow O orange B blue W white	Lamp voltage AC/DC 6V AC/DC 12V AC/DC 24V AC/DC 110V AC/DC 220V	The Crust Material S stainless steel						
		See the detailed description which are available	No letter means momentary		● Operation type of selector and Key-lock type 1 Maintain 3 Return		Other voltage can be made to order							

Note: Please read the catalog carefully, and choose the right part-number according to the sign.

Switch Rating

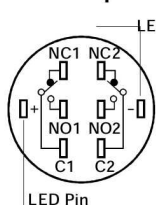
Rated Insulation Voltage U_i		250V				
Thermal Current I_{th}		Max. 5A				
Rated voltage		12V	24V	110V	220V	
Rated Operation Current	AC 50/60Hz	Resistive load	—	1A	0.5A	
		Inductive load	—	0.7A	0.5A	
	DC	Resistive load	1A	1A	0.2A	—
		Inductive load	0.7A	0.7A	0.1A	—
Contact material		Silver Alloy				

Minimum load: 3V AC/DC, 5mA (Reference)
Application scope depends on operating environment and load type

Performance Characteristic

Operating Temp	-25°C~+55°C (Non freezing) Keep the switch air circulating well
Operating Humidity	45-85%RH(Non condensing)
Contact Resistance	≤ 50mΩ
Insulation Resistance	≥ 1000MΩ
Max. withstanding Voltage	2000V, AC50Hz, 5s
Vibration Resistance	50Hz, amplitude about 1.2mm
Shock Resistance	> 10g
Solder Heat Resistance	320°C (or 30W soldering iron) no more than 2s

Terminal Description



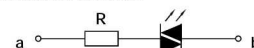
LED Pin two sets at most
C1NO1NC1 and C2NO2NC2
are one set respectively. C is common used,
NO is normal opened, NC is normal closed;
+ - are lamp terminals, the standard LED
have no difference of anode and cathode;
Lamp and switch are relatively independent
and can use switch or peripheral circuit to
control the lamp state.

Standard and Certificate

Standard	Certification mark
UL508	
EN61058	
GB14048.5-2008	
EN61058-1:2002+A2:2008	
EN60947-1:2004	

Lamp Ratings

Lamp Type	LED lamp(AC/DC)
LED Color	R G Y O B W
Life	40000 hours (Reference)
Rated Voltage	AC/DC6V, AC/DC12V, AC/DC110V, AC/DC24V, AC/DC36V, AC/DC220V
Rated Current	About 15mA; About 2mA
Dropping Way	Inner resistor
Lamp Circuit Diagram	Using AC/DC LED lamp, the terminals have no difference of anode and cathode: Using inner resistor, do not need connect outer resistor.



Note: DC LED and other voltage can be made to order.

Switching Operation

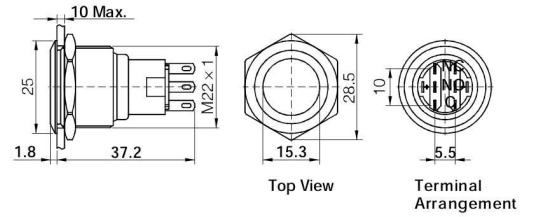
Type	Diagram	Sign
C		

MQ22-A Anti-vandal Water-proof Metal push button

MQ22-A -□■/S
flat round



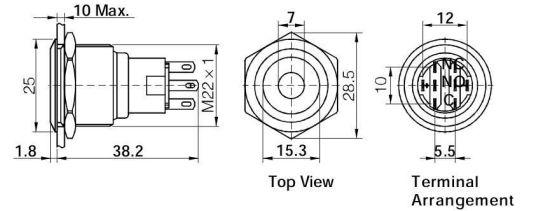
stainless steel



MQ22-A -□■D/△/▲/S
flat round, dot illuminated



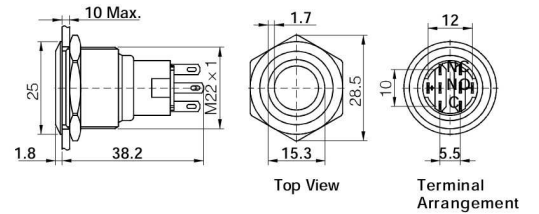
stainless steel



MQ22-A -□■E/△/▲/S
flat round, ring illuminated



stainless steel

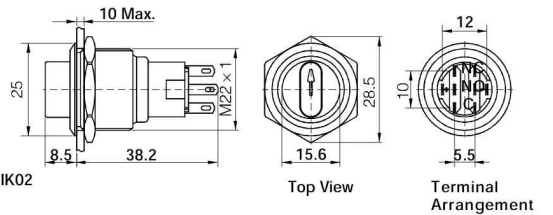


MQ22-A -□X/◆●/△/▲/☆/S
illuminated selector switch



stainless steel

Operation Position(◆●):
90° 2 position maintain(21)
90° 2 position return(23)
45° 3 position maintain(31)
45° 3 position return(33)
IP Degree(☆):
return IP40,
maintain IP65(IP67 made to order); IK02

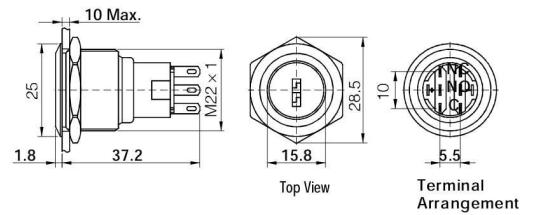


MQ22-A -□Y/◆●/S
key-lock switch

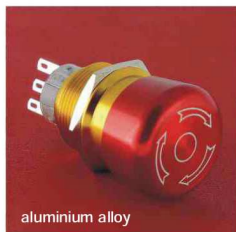


stainless steel

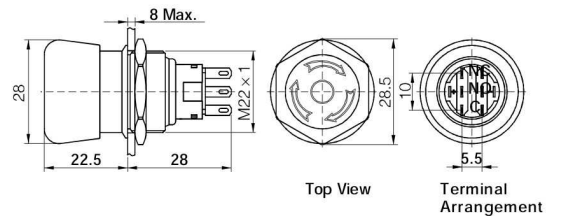
Operation Type(◆●):
90° 2 position maintain (21)
90° 2 position return (23)
45° 3 position maintain(31)
IP Degree: IP40, IK02



MQ22-A -□TSB
emergency-stop switch



aluminium alloy



- ⊙ Diameter: $\Phi 22\text{mm}$
- ⊙ Switch Rating: Ith:5A, Ui:250V
- ⊙ Contact Configuration: 1NO1NC(11)/2NO2NC(22)
- ⊙ Operation Type(■): Momentary / Latching(Z)
- ⊙ LED Color(△): R G Y O B W
- ⊙ LED Voltage(▲): 6V/12V/24V/110V/220V
- ⊙ IP Degree: IP65,IK09(pushbutton switch)
IP65,IK02(emergency-stop switch)

- ⊙ Terminal Type: Pin terminal(2.8 × 0.5mm)
- ⊙ Switching: C(single-break fast-motion chnageover contact)
- ⊙ Mechanical Life: Selector switch:500,000 cycles
Key-lock switch:200,000 cycles
- ⊙ Electrical Life: > 50, 000 cycles

- ⊙ Actuator Material: Stainless steel/Aluminium alloy
- ⊙ Crust Material: Stainless steel/Aluminium alloy
- ⊙ Base Material: PBT
- ⊙ Operation Pressure: About 2N(1NO1NC)
About 3N(2NO2NC)
- ⊙ Operation Travel: About 3.1mm
- ⊙ **RoHS** Made to order

