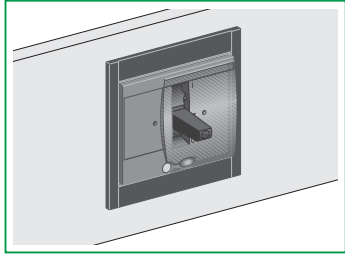


Compact NSX100-630
FPower NSX / GV7
Compact NSJ
 IP30 escutcheon
 Cadre de porte IP30
 Marco embellecedor IP30



Schneider
 Electric

GHD16284AA-04

Schneider Electric Industries SAS

35, rue Joseph Monier
 CS 30323
 F - 92506 Rueil Malmaison Cedex

www.schneider-electric.com



© 2009 Schneider Electric.
 All rights reserved.

IMPORTANT NOTE

- This device must be installed by a qualified electrician.
- We cannot accept any responsibility for failure to follow the instructions provided in this document.

REMARQUE IMPORTANTE

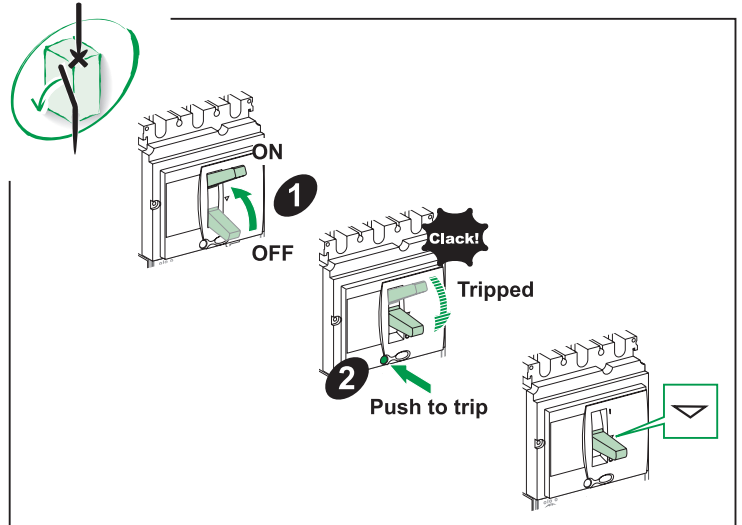
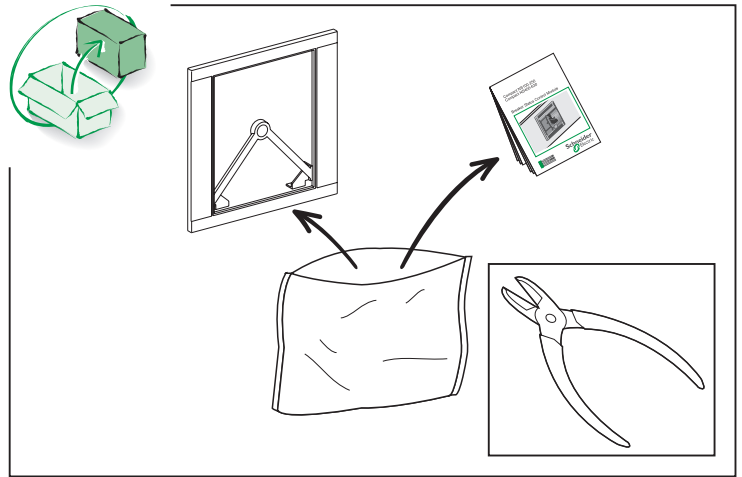
- L'installation de cet appareil doit être effectuée par des professionnels de l'électricité.
- Le non-respect des indications de la présente notice ne saurait engager la responsabilité du constructeur.

OBSERVACIÓN IMPORTANTE

- La instalación y mantenimiento de este aparato sólo debe ser realizado por electricistas profesionales.
- El fabricante no se hace responsable en caso de no cumplir con las indicaciones expuestas en este aviso.

重要注意事項

- 本装置必须由合格的电工进行安装。
- 我们不承担任何因未遵循本文档中的指南而导致的责任。



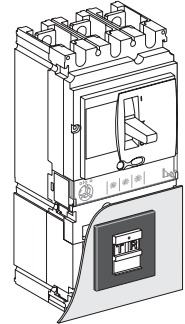
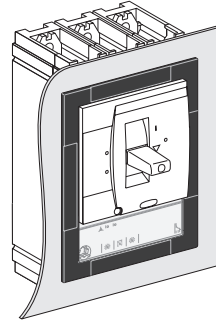
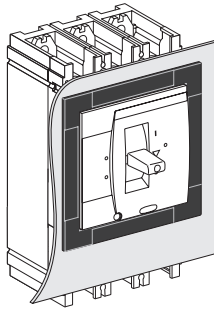
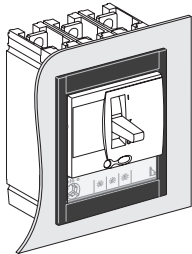
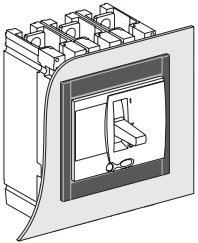
NSX100-250

NSX100-250 + TM / Micrologic

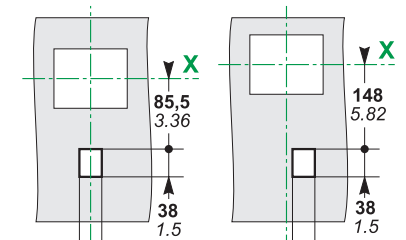
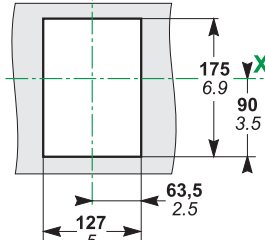
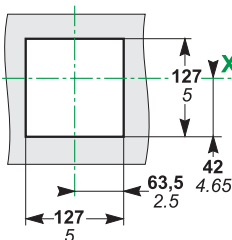
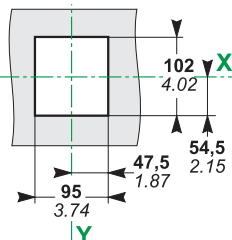
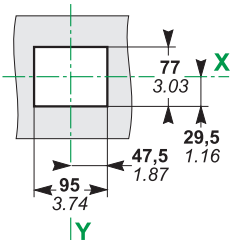
NSX400-630

NSX400-630 + TM / Micrologic

Vigi



mm
in



100-250 A

400-630 A

