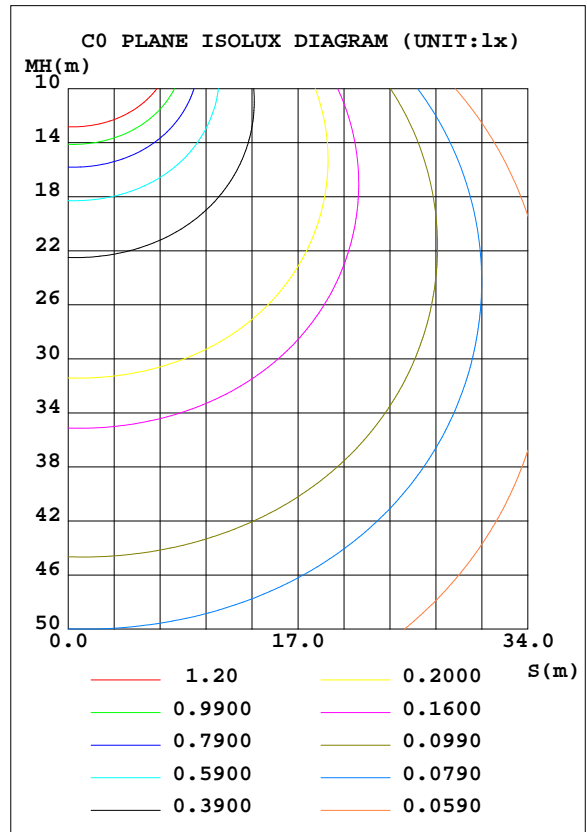
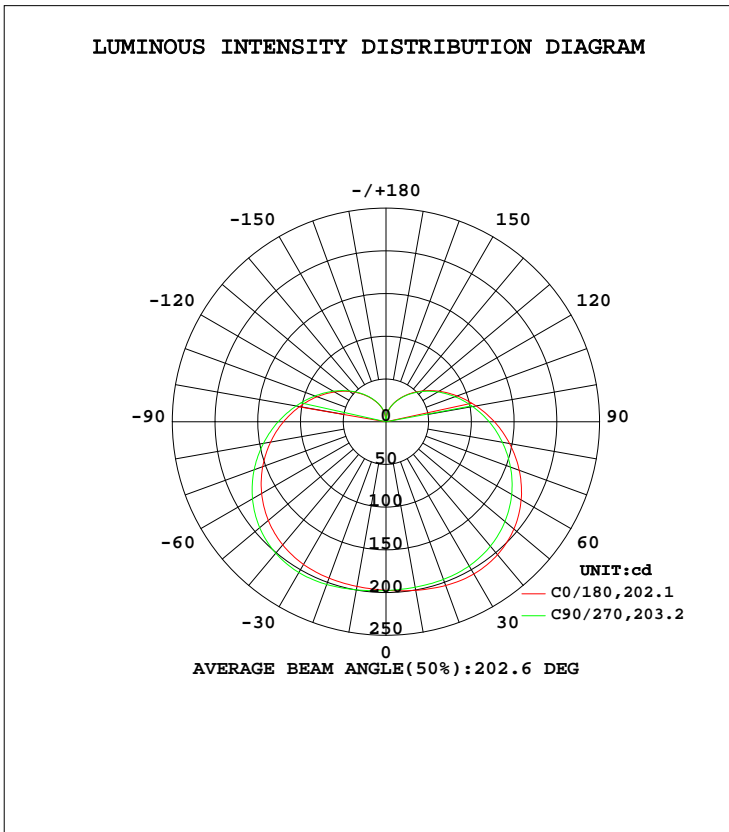


EVERFINE GONIOPHOTOMETERS SYSTEM TEST REPORT

LUMINAIRE PHOTOMETRIC TEST REPORT

Test:U:240.0V I:0.1080A P:13.61W PF:0.5250 Freq:49.99Hz Lamp Flux:1513.24x1 lm		
NAME: 9aSA-A1521ST-Q1-03	TYPE:LED	WEIGHT:
SPEC.:9aSA-A1521ST-Q1-03 240V50HZ	DIM.:	SERIAL No.:C2031647A001
MFR.: EVERFINE	SUR.:	Shielding Angle:

DATA OF LAMP		PHOTOMETRIC DATA Eff: 111.18 lm/W			
MODEL		I _{max} (cd)	205.8	S/MH(C0/180)	1.49
NOMINAL POWER(W)	13.2	LOR(%)	100.0	S/MH(C90/270)	1.56
RATED VOLTAGE(V)	240	TOTAL FLUX(lm)	1513.2	η UP, DN(C0-180)	14.5, 35.7
NOMINAL FLUX(lm)	1513.24	CIE CLASS	SEMI-D.	η UP, DN(C180-360)	14.5, 35.3
LAMPS INSIDE	1	η up(%)	29.0	CIBSE SHR NOM	1.75
TEST VOLTAGE(V)	240	η down(%)	71.0	CIBSE SHR MAX	1.75



C Range: 0 - 360DEG
 C Interval: 90.0DEG
 Test Speed: HIGH
 Temperature:25.3DEG
 Operators:肖春梅
 Test Date:2020-08-07

γ Range: 0 - 180DEG
 γ Interval: 1.0DEG
 Test System:EVERFINE GO-SPEX500_V1 SYSTEM V2.0.363T
 Humidity:65.0%
 Test Distance:4.950m [K=1.0000]
 Remarks:

EVERFINE GONIOPHOTOMETERS SYSTEM TEST REPORT

ZONAL FLUX DIAGRAM

ZONAL FLUX DIAGRAM:

γ	C0	C90	C180	C270				γ	Φ zone	Φ total	%lum, lamp
10	200.3	196.7	195.7	199.8				0- 10	18.88	18.88	1.25,1.25
20	204.0	196.4	194.9	202.7				10- 20	56.38	75.26	4.97,4.97
30	205.8	194.8	192.9	203.8				20- 30	92.40	167.7	11.1,11.1
40	203.1	190.1	188.1	200.8				30- 40	124.2	291.8	19.3,19.3
50	195.4	181.8	179.8	192.9				40- 50	148.5	440.3	29.1,29.1
60	182.7	169.9	168.0	180.4				50- 60	162.9	603.2	39.9,39.9
70	166.0	155.0	153.6	164.2				60- 70	166.3	769.5	50.9,50.9
80	146.9	138.3	137.2	145.6				70- 80	159.6	929.2	61.4,61.4
90	127.0	120.9	120.0	126.1				80- 90	144.8	1074	71,71
100	107.2	103.0	102.6	106.8				90-100	124.5	1199	79.2,79.2
110	88.65	85.89	85.75	88.51				100-110	101.6	1300	85.9,85.9
120	71.61	69.93	69.91	71.61				110-120	78.40	1379	91.1,91.1
130	56.29	55.26	55.21	56.23				120-130	56.78	1435	94.9,94.9
140	42.78	41.97	41.85	42.59				130-140	38.01	1473	97.4,97.4
150	30.97	30.34	30.08	30.65				140-150	22.94	1496	98.9,98.9
160	20.90	20.53	20.08	20.39				150-160	11.88	1508	99.7,99.7
170	11.21	10.49	9.378	10.31				160-170	4.584	1513	100,100
180	1.933	1.931	1.933	1.933				170-180	0.5033	1513	100,100
DEG	LUMINOUS INTENSITY:cd								UNIT:lm		

Conical surface Flux(90deg): 363.63 lm

%lum = 24.0%
%lamp = 24.0%

Conical surface Flux(120deg): 603.2 lm

%lum = 39.9%
%lamp = 39.9%

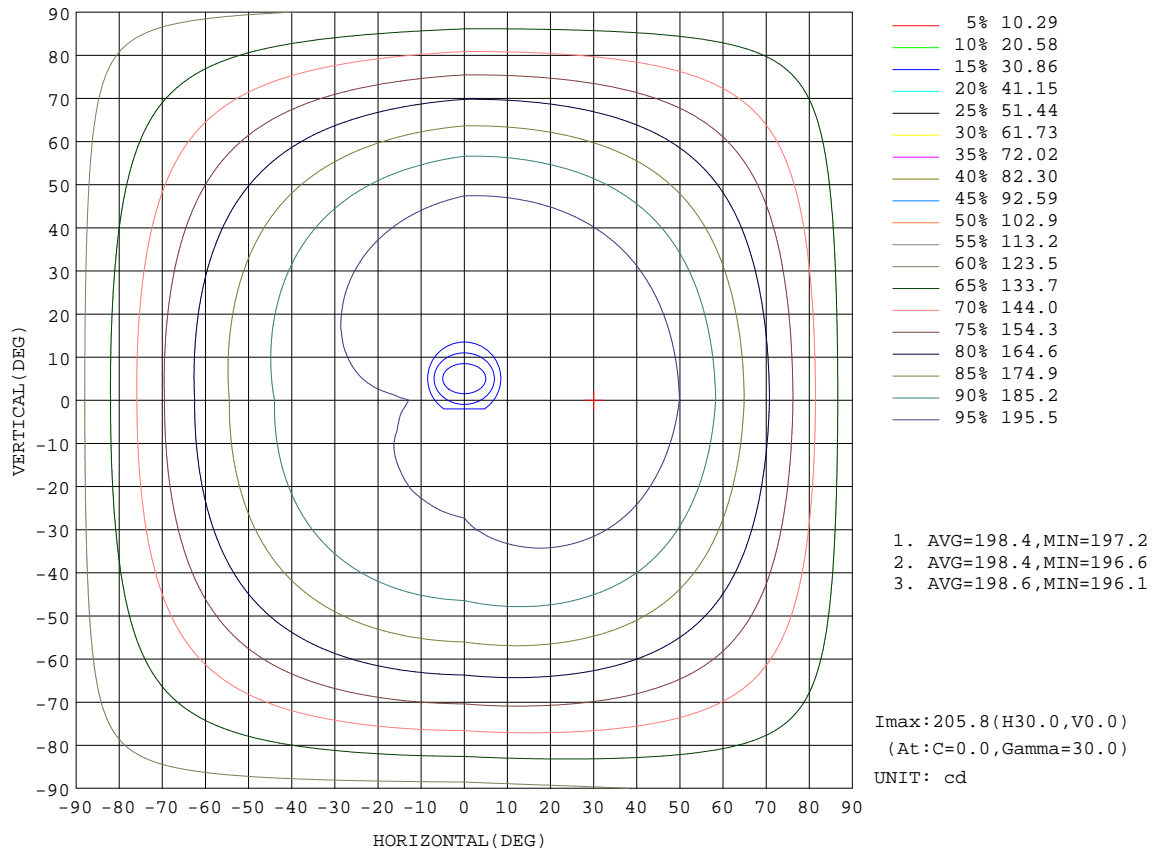
C Range: 0 - 360DEG
C Interval: 90.0DEG
Test Speed: HIGH
Temperature:25.3DEG
Operators:肖春梅
Test Date:2020-08-07

γ Range: 0 - 180DEG
γ Interval: 1.0DEG
Test System:EVERFINE GO-SPEX500_V1 SYSTEM V2.0.363T
Humidity:65.0%
Test Distance:4.950m [K=1.0000]
Remarks:

EVERFINE GONIOPHOTOMETERS SYSTEM TEST REPORT

ISOCANDELA DIAGRAM

Test:U:240.0V I:0.1080A P:13.61W PF:0.5250 Freq:49.99Hz Lamp Flux:1513.24x1 lm		
NAME: 9aSA-A1521ST-Q1-03	TYPE:LED	WEIGHT:
SPEC.:9aSA-A1521ST-Q1-03 240V50HZ	DIM.:	SERIAL No.:C2031647A001
MFR.: EVERFINE	SUR.:	Shielding Angle:



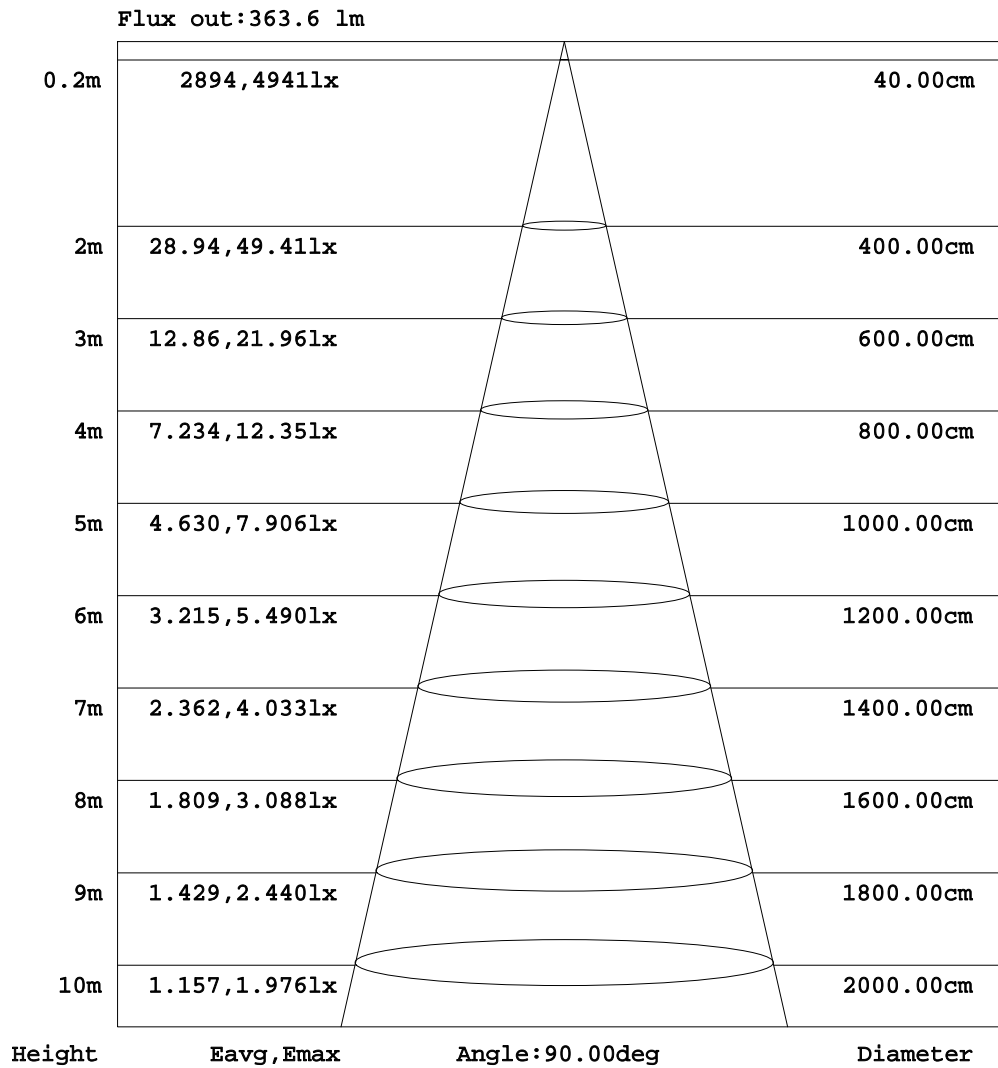
C Range: 0 - 360DEG
 C Interval: 90.0DEG
 Test Speed: HIGH
 Temperature:25.3DEG
 Operators:肖春梅
 Test Date:2020-08-07

γ Range: 0 - 180DEG
 γ Interval: 1.0DEG
 Test System:EVERFINE GO-SPEX500_V1 SYSTEM V2.0.363T
 Humidity:65.0%
 Test Distance:4.950m [K=1.0000]
 Remarks:

EVERFINE GONIOPHOTOMETERS SYSTEM TEST REPORT

AAI Figure

Test:U:240.0V I:0.1080A P:13.61W PF:0.5250 Freq:49.99Hz Lamp Flux:1513.24x1 lm		
NAME: 9aSA-A1521ST-Q1-03	TYPE:LED	WEIGHT:
SPEC.:9aSA-A1521ST-Q1-03 240V50HZ	DIM.:	SERIAL No.:C2031647A001
MFR.: EVERFINE	SUR.:	Shielding Angle:



Note:The Curves indicate the illuminated area and the average illumination when the luminaire is at different distance.

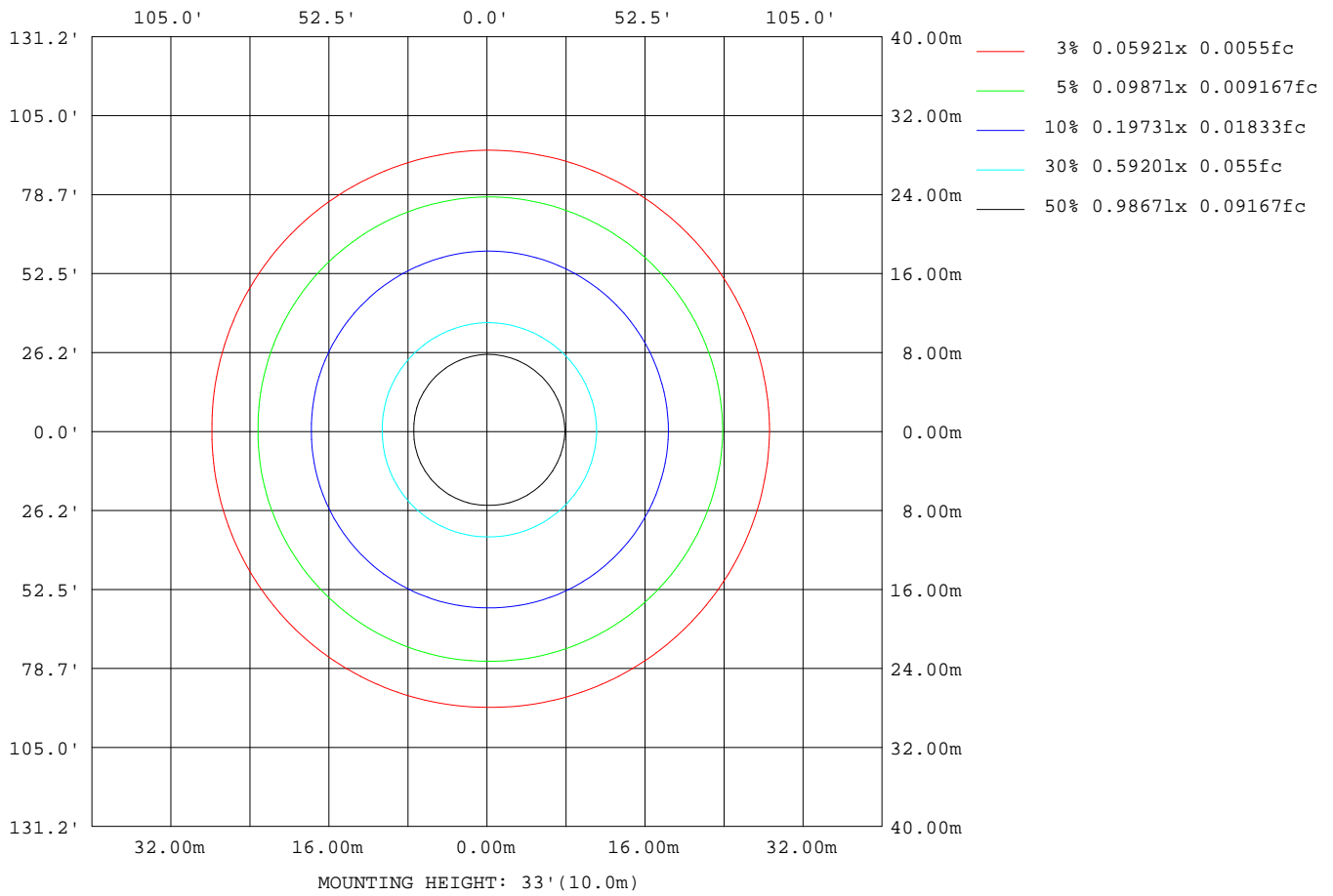
C Range: 0 - 360DEG
 C Interval: 90.0DEG
 Test Speed: HIGH
 Temperature:25.3DEG
 Operators:肖春梅
 Test Date:2020-08-07

γ Range: 0 - 180DEG
 γ Interval: 1.0DEG
 Test System:EVERFINE GO-SPEX500_V1 SYSTEM V2.0.363T
 Humidity:65.0%
 Test Distance:4.950m [K=1.0000]
 Remarks:

EVERFINE GONIOPHOTOMETERS SYSTEM TEST REPORT

ISOLUX DIAGRAM

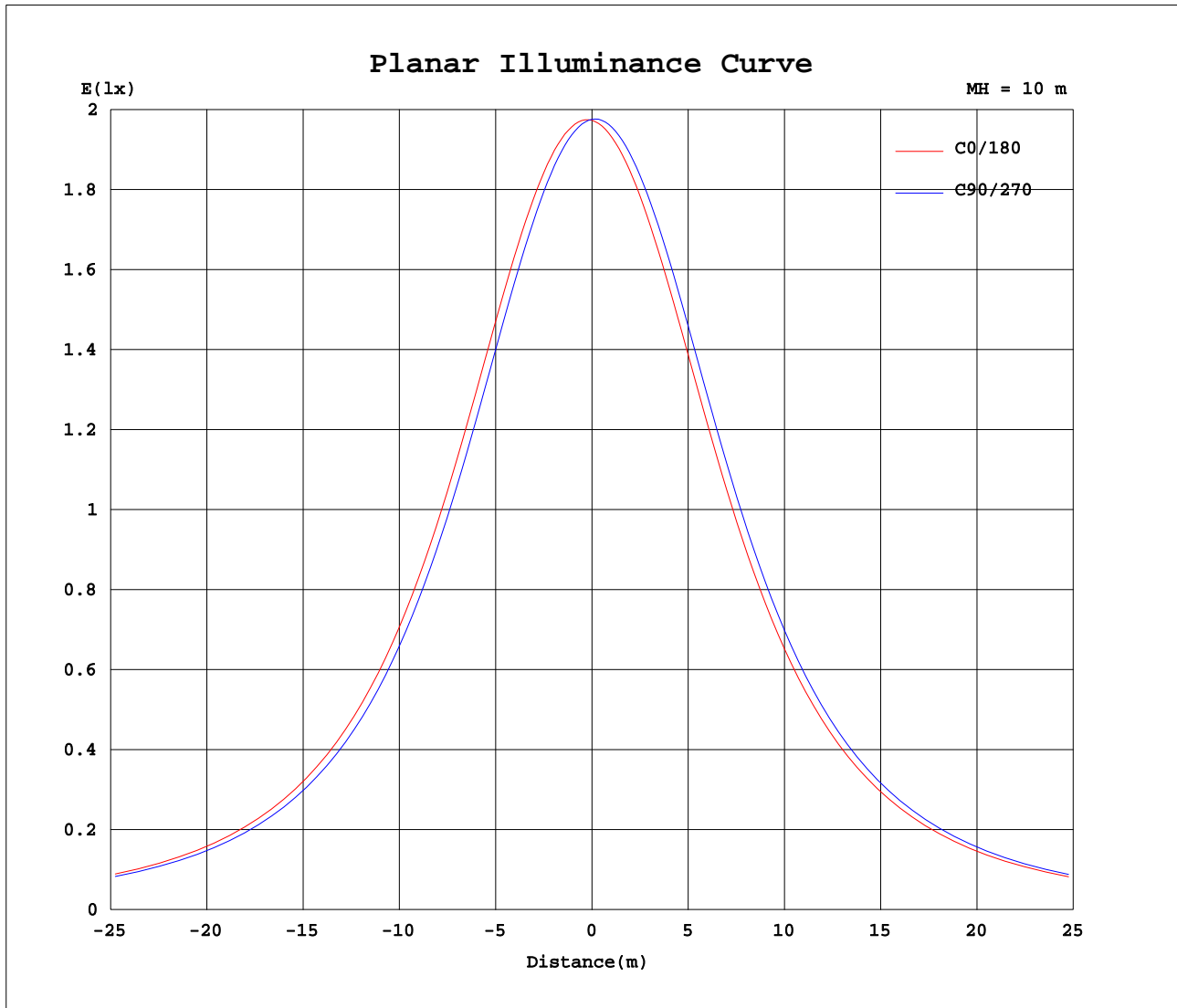
Test:U:240.0V I:0.1080A P:13.61W PF:0.5250 Freq:49.99Hz Lamp Flux:1513.24x1 lm		
NAME: 9aSA-A1521ST-Q1-03	TYPE:LED	WEIGHT:
SPEC.:9aSA-A1521ST-Q1-03 240V50HZ	DIM.:	SERIAL No.:C2031647A001
MFR.: EVERFINE	SUR.:	Shielding Angle:



C Range: 0 - 360DEG
 C Interval: 90.0DEG
 Test Speed: HIGH
 Temperature: 25.3DEG
 Operators: 肖春梅
 Test Date: 2020-08-07

γ Range: 0 - 180DEG
 γ Interval: 1.0DEG
 Test System: EVERFINE GO-SPEX500_V1 SYSTEM V2.0.363T
 Humidity: 65.0%
 Test Distance: 4.950m [K=1.0000]
 Remarks:

Planar Illuminance Curve



C Range: 0 - 360DEG
 C Interval: 90.0DEG
 Test Speed: HIGH
 Temperature: 25.3DEG
 Operators: 肖春梅
 Test Date: 2020-08-07

γ Range: 0 - 180DEG
 γ Interval: 1.0DEG
 Test System: EVERFINE GO-SPEX500_V1 SYSTEM V2.0.363T
 Humidity: 65.0%
 Test Distance: 4.950m [K=1.0000]
 Remarks:

EVERFINE GONIOPHOTOMETERS SYSTEM TEST REPORT

LUMINOUS DISTRIBUTION INTENSITY DATA

Test:U:240.0V I:0.1080A P:13.61W PF:0.5250 Freq:49.99Hz Lamp Flux:1513.24x1 lm		
NAME: 9aSA-A1521ST-Q1-03	TYPE:LED	WEIGHT:
SPEC.:9aSA-A1521ST-Q1-03 240V50HZ	DIM.:	SERIAL No.:C2031647A001
MFR.: EVERFINE	SUR.:	Shielding Angle:

Table--1

UNIT: cd

C(DEG) γ (DEG)	0	90	180	270															
0	197	198	197	198															
5	199	197	196	199															
10	200	197	196	200															
15	202	197	195	201															
20	204	196	195	203															
25	205	196	194	204															
30	206	195	193	204															
35	205	193	191	203															
40	203	190	188	201															
45	200	186	184	197															
50	195	182	180	193															
55	190	176	174	187															
60	183	170	168	180															
65	175	163	161	173															
70	166	155	154	164															
75	157	147	146	155															
80	147	138	137	146															
85	137	130	129	136															
90	127	121	120	126															
95	117	112	111	116															
100	107	103	103	107															
105	97.7	94.3	94.1	97.5															
110	88.6	85.9	85.8	88.5															
115	79.9	77.8	77.7	79.9															
120	71.6	69.9	69.9	71.6															
125	63.7	62.4	62.4	63.7															
130	56.3	55.3	55.2	56.2															
135	49.3	48.4	48.3	49.2															
140	42.8	42.0	41.8	42.6															
145	36.7	36.0	35.7	36.4															
150	31.0	30.3	30.1	30.6															
155	25.7	25.2	24.9	25.3															
160	20.9	20.5	20.1	20.4															
165	16.2	15.9	15.3	15.6															
170	11.2	10.5	9.38	10.3															
175	1.93	1.89	1.86	1.84															
180	1.93	1.93	1.93	1.93															

C Range: 0 - 360DEG
 C Interval: 90.0DEG
 Test Speed: HIGH
 Temperature:25.3DEG
 Operators:肖春梅
 Test Date:2020-08-07

γ Range: 0 - 180DEG
 γ Interval: 1.0DEG
 Test System:EVERFINE GO-SPEX500_V1 SYSTEM V2.0.363T
 Humidity:65.0%
 Test Distance:4.950m [K=1.0000]
 Remarks: