

Part number

# CR 10 ST



Cable anchorage, for shielded cables, for MIXO frames for 3 inserts

#### Product description

|                      |   |
|----------------------|---|
| <b>Product type</b>  | Cable anchorage   |
| <b>Size</b>          | Size 57.27  |
| <b>Specification</b> | For MIXO frames, for shielded cables<br>In zinc plated iron |

#### Further technical details

|               |         |
|---------------|---------|
| <b>Weight</b> | 14,00 g |
|---------------|---------|

#### General ordering information

|                   |               |
|-------------------|---------------|
| <b>EAN13 code</b> | 8015747102414 |
| <b>eCl@ss 8.1</b> | 27449290      |
| <b>ETIM 7.0</b>   | EC002943      |

#### Packaging Information

|                                  |               |
|----------------------------------|---------------|
| <b>Sub-packaging weight</b>      | 0,07 kg       |
| <b>Sub-packaging description</b> | Plastic bag   |
| <b>Sub-packaging quantity</b>    | 5 Pcs         |
| <b>Sub-packaging EAN barcode</b> | 8015747102483 |

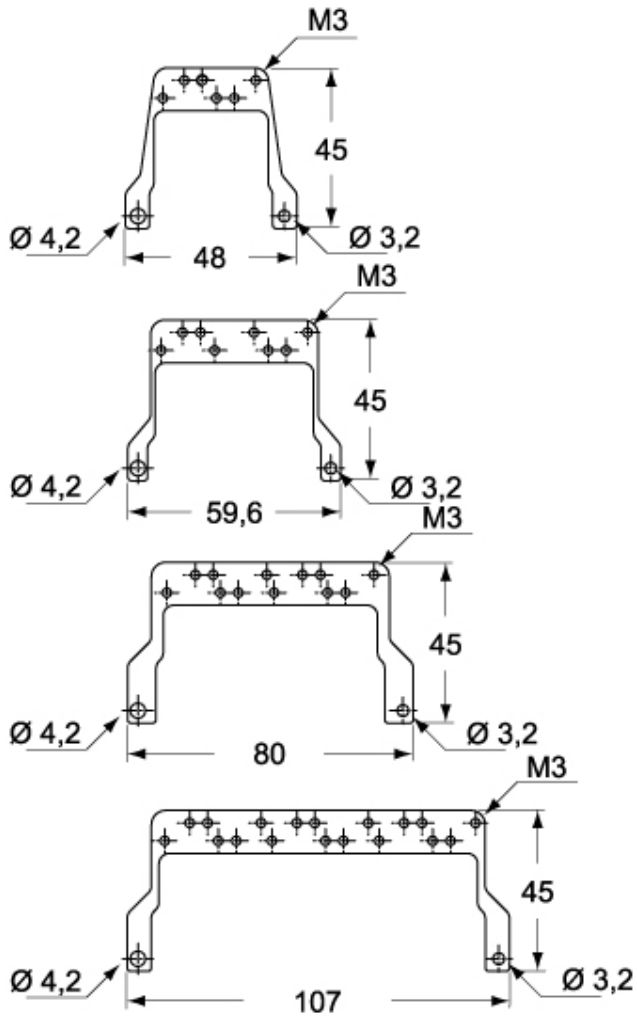
Part number

# CR 10 ST

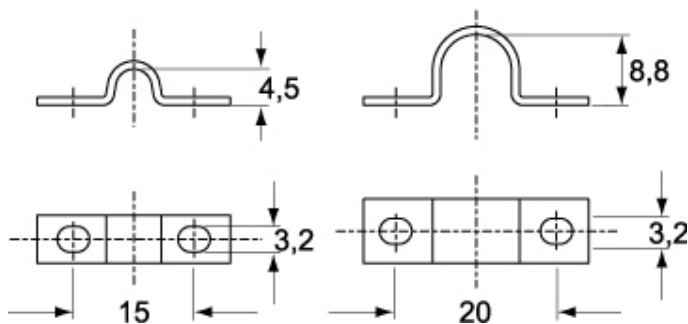


Catalogue drawings

## CR...ST



## CR...CA



Notes

## CR .. ST

Anchorage CR .. ST are designed for installation on the frames of the MIXO modular connectors, for earth connecting the screening braid of shielded cables.

With the CR..ST anchorages we advise you to use high construction hoods top entry.

---

Dimensions shown in mm are not binding and may be changed without notice.

---