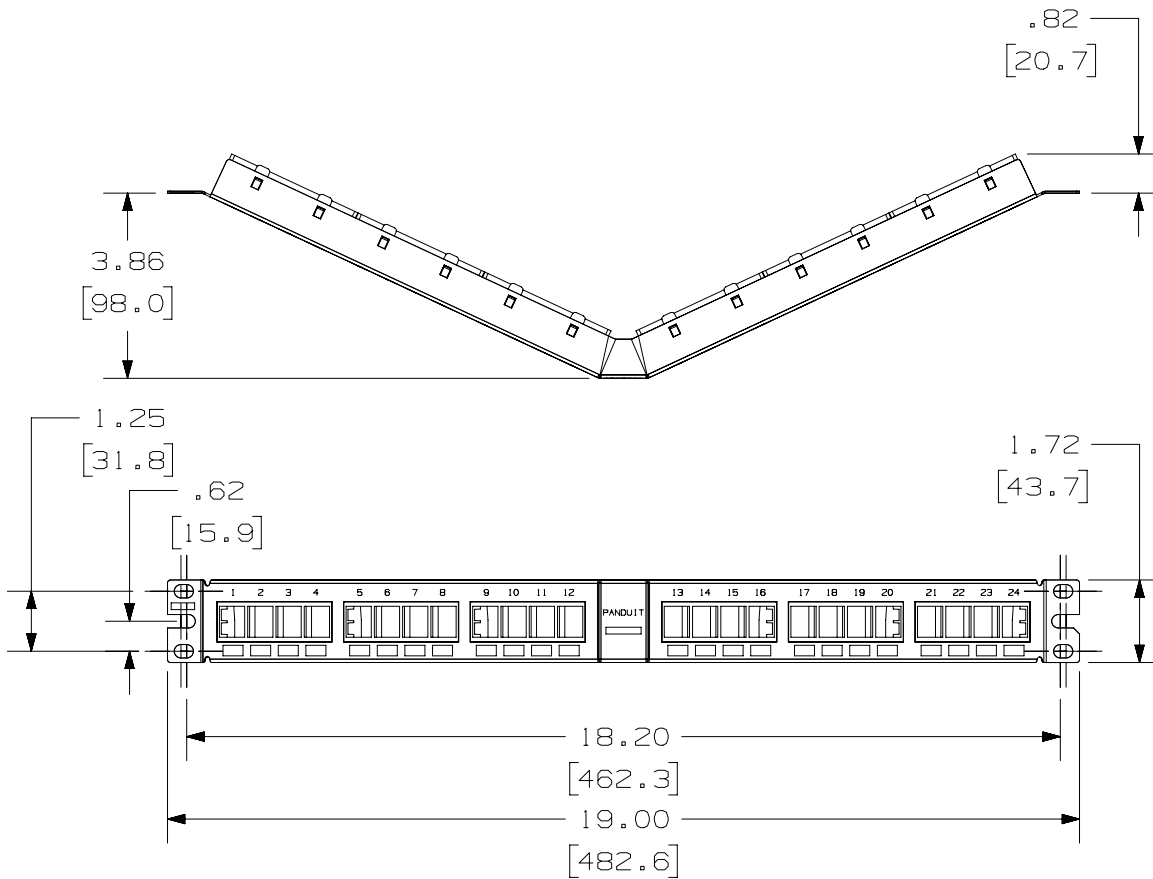


2

1

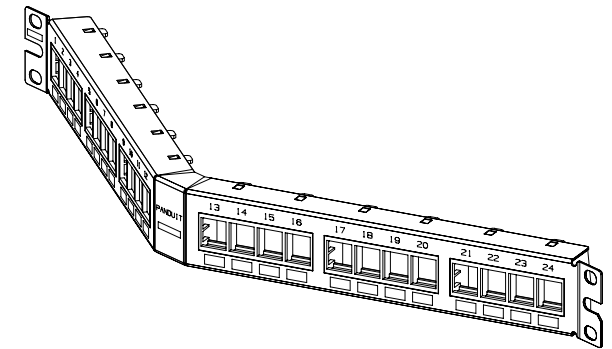
THIS COPY IS PROVIDED ON A RESTRICTED BASIS AND IS NOT TO BE USED IN ANY WAY DETRIMENTAL TO THE INTERESTS OF PANDUIT CORP.



PANDUIT P/N	WEIGHT
NKPPA24FMY	8.05 LB/10 PCS (3653.6 g/10 PCS)

NOTES:

- SEE CURRENT CATALOG FOR VARIOUS APPLICATIONS WITH THIS WIRING SYSTEM.
- THE FLUSH MOUNT PATCH PANEL IS DESIGNED FOR MOUNTING TO 19" UNIVERSAL RACKS.
- PACKAGE CONTENTS:
 (1) -24 PORT ANGLED STAMPING
 (6) -4 POSITION FACEPLATE (ASSEMBLED TO PANEL)
 (1) -SCREW KIT (INCLUDES FOUR #12-24 SCREWS)
- DIMENSIONS IN PARENTHESIS ARE IN METRIC.



A

PART NUMBER		NKPPA24FMY		
TITLE				
NETKEY ANGLED 24 PORT FLUSH MOUNT MODULAR PATCH PANEL				
CUSTOMER DRAWING				
ITEM REVISION NAME		M02479D0/02		
DATASET FILE NAME		M02479D0_DC95/02A		
UNLESS OTHERWISE SPECIFIED, DIMENSIONAL TOLERANCES ARE: IN (mm)		MATERIAL:		
.x ± .xx ± .03 (.8)		.xxx ± .010 (.3)		
ANGLES ±		THIRD ANGLE PROJECTION		
DRAWN BY		DATE		SCALE
JSP		4-19-06		MJD NONE
CHK		MJD		SCALE
MJD		NONE		SCALE
DRAWING NUMBER:		02479-095		
REV		DATE		BY
JSP		4-19-06		MJD
CHK		MJD		MJD
APR		DESCRIPTION		ECN
MJD		RELEASED TO PRODUCTION		02479-095
APR		B. REMOVED METRIC SCREWS		02479-095
MJD		A. UPDATED TITLE BLOCK.		02479-095
MJD		RELEASED TO PRODUCTION		02479-095
APR		DESCRIPTION		ECN
MJD		RELEASED TO PRODUCTION		02479-095

2

1

D10100DA/14