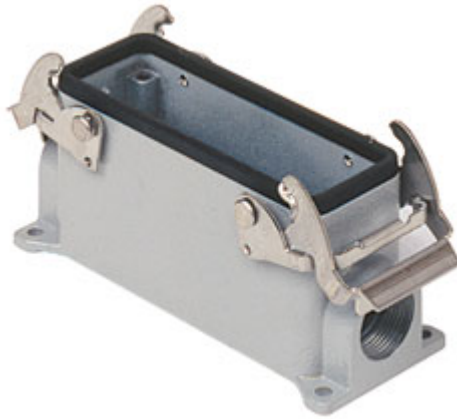


Part number

M7P 10.220



Surface mounting housing, V-TYPE series, with 2 levers, M20 x 2 cable entry, size "57.27"

Product description

Product type	Surface mounting housing
Series	V-TYPE
Closing type	With 2 levers
Size	Size 57.27
Cable entry	With cable entry M20 x 2

Technical data

IP degree of protection IP66 / IP67 / IP69

Further technical details

Weight	262,00 g
Operating temperature range (min, max)	-40°C...+125°C

Material properties

Other materials	Lever: Stainless steel Gasket: NBR
Colour	RAL 7040 grey
RoHs conformity	Compliant
China RoHs - EFUP	E
REACH SVHC substances	No

Approvals / Standards

Certifications	DNV, BV
UL	ECBT2
cUL	ECBT8

General ordering information

EAN13 code	8015747187862
eCl@ss 8.1	27440202
ETIM 7.0	EC000437

Packaging Information

Packaging length	475,00 mm
Packaging height	200,00 mm
Packaging width	150,00 mm
Packaging weight	2,82 kg
Packaging volume	14,25 dm ³
Packaging description	Carton box
Packaging quantity	10 Pcs
Packaging EAN code	8015747249102
Sub-packaging weight	1,41 kg
Sub-packaging description	Plastic packaging
Sub-packaging quantity	5 Pcs
Sub-packaging EAN barcode	8015747187916

Part number

M7P 10.220



Notes

Dimensions shown in mm are not binding and may be changed without notice.
