



| | | | |
|---|--|----|------|
| Product designation | Rotary cam switches | | |
| Product type designation | 7GN40 | | |
| General characteristics | | | |
| Switching diagram | 10 - ON/OFF switch 3 poles | | |
| N° of elements | 2 | | |
| Mounting form | U25 - Front mounting with red/yellow handle padlockable in 0 and protection covers | | |
| Contact characteristics | | | |
| Rated insulation voltage U_i | IEC/EN | V | 690 |
| | UL/CSA | V | 600 |
| Rated impulse withstand voltage U_{imp} | | kV | 6 |
| Conventional free air thermal current I_{th} | IEC/EN | A | 40 |
| | UL/CSA | A | 50 |
| Rated operational voltage | | V | 480 |
| Rated operational impulse voltage | | kV | 4 |
| Maximum fuse size for short-circuit protection I_n (gG) | 10kA | A | 40 |
| | 15kA | A | 40 |
| | 25kA | A | 40 |
| | 50kA | A | 40 |
| | 63kA | A | 40 |
| Rated short time current I_{cw} | 1s | A | 1000 |
| | Conductivity 10/5 mA/V | | |
| Operational current I_e IEC/EN | AC1/AC21A | | A 40 |
| | AC15 | | |
| Rated operational power in AC | 110V | A | 25 |
| | 220/230V | A | 22 |
| | 380/400V | A | 12 |
| | 660/690V | A | 2 |
| | Three-phase AC-3 | | |
| Single-phase AC-3 | 220/230V | kW | 8 |
| | 380/440V | kW | 15 |
| | 500/690V | kW | 15 |

| | | | |
|--|----------|-----------------|-------------------|
| | 110V | kW | 3 |
| | 220/230V | kW | 6.5 |
| | 380/440V | kW | 8 |
| <hr/> | | | |
| Three-phase AC23A | | | |
| | 220/230V | kW | 8 |
| | 380/440V | kW | 18.5 |
| | 500/690V | kW | 22 |
| <hr/> | | | |
| Single-phase AC23A | | | |
| | 110V | kW | 3 |
| | 220/230V | kW | 6 |
| | 380/440V | kW | 11 |
| <hr/> | | | |
| Rated operational current in DC | | | |
| DC21A | | | |
| | 48V | A | 40 |
| | 60V | A | 40 |
| | 110V | A | 6 |
| | 220V | A | 0.9 |
| <hr/> | | | |
| DC23A (poles in series) | | | |
| | 24V | A | 40 (1) |
| | 48V | A | 40 (2) |
| | 60V | A | 40 (3) |
| | 110V | A | 20 (3) |
| | 220V | A | 12 (4) |
| <hr/> | | | |
| DC13 | | | |
| | 24V | A | 40 |
| | 48V | A | 32 |
| | 60V | A | 16 |
| | 110V | A | 3 |
| <hr/> | | | |
| Power dissipation | | W | 2.0 |
| <hr/> | | | |
| Mechanical features | | | |
| Terminals screw | | | M4 |
| <hr/> | | | |
| Tightening torque for terminals max | | Nm | 1.2 |
| <hr/> | | | |
| Conductor size | | | |
| AWG - Rigid cable | | | |
| | min | AWG | 16 |
| | Max | AWG | 8 |
| <hr/> | | | |
| AWG - Flexible cable | | | |
| | min | AWG | 16 |
| | Max | AWG | 10 |
| <hr/> | | | |
| Conductor size (IEC) - Flexible cable | | | |
| | min | mm ² | 1.5 |
| | Max | mm ² | 6 |
| <hr/> | | | |
| Conductor size (IEC) - Rigid cable | | | |
| | min | mm ² | 1.5 |
| | Max | mm ² | 10 |
| <hr/> | | | |
| Mechanical life | | cycles | 5x10 ⁶ |
| <hr/> | | | |
| UL technical data | | | |
| Motor power for direct-on-line control | | | |
| for three-phase motor | | | |
| | 120V | HP | 5 |
| | 240V | HP | 10 |
| | 480V | HP | 20 |
| | 600V | HP | 20 |
| <hr/> | | | |
| for single-phase motor | | | |

| | | |
|------|----|---|
| 120V | HP | 2 |
| 240V | HP | 5 |

Ambient conditions

Temperature

Operating temperature

| | | |
|-----|----|-----|
| min | °C | -25 |
| max | °C | +55 |

Storage temperature

| | | |
|-----|----|-----|
| min | °C | -40 |
| max | °C | +70 |

Resistance & Protection

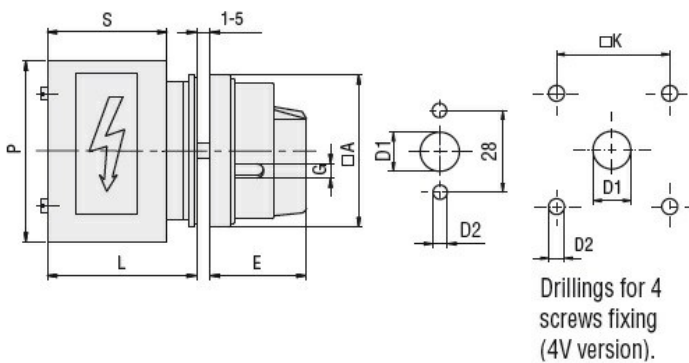
Frontal IP degree

IP40

Terminals IP degree

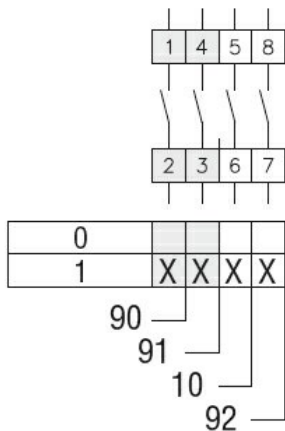
IP00

Dimensions



| Series | Dimensions | | | | | | | | |
|--------|------------|----|----|------|---|----|----|----|------|
| | □A | D1 | D2 | E | G | □K | S | P | L |
| 7GN12 | 65 | 12 | 5 | 34.2 | 5 | 36 | 43 | 64 | 54.3 |
| 7GN20 | 65 | 12 | 5 | 34.2 | 5 | 36 | 43 | 64 | 54.3 |
| 7GN25 | 65 | 12 | 5 | 34.2 | 5 | 36 | 51 | 68 | 62.6 |
| 7GN32 | 65 | 14 | 5 | 38 | 6 | 48 | 55 | 77 | 71.7 |
| 7GN40 | 65 | 14 | 5 | 38 | 6 | 48 | 55 | 77 | 71.7 |

Wiring diagrams



Certifications and compliance

Compliance

- CSA C22.2 n° 14
- IEC/EN/BS 60947-1
- IEC/EN/BS 60947-3
- IEC/EN/BS 60947-5-1
- UL60947-4-1

Certificates

cCSAus

EAC

UL

ETIM classification

ETIM 8.0

EC001029 -
Selector switch,
complete