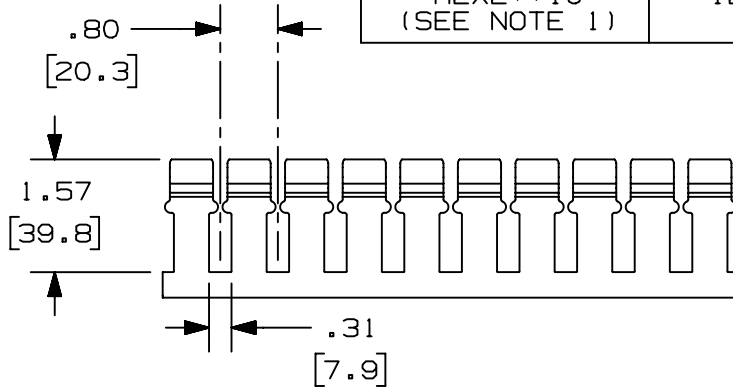


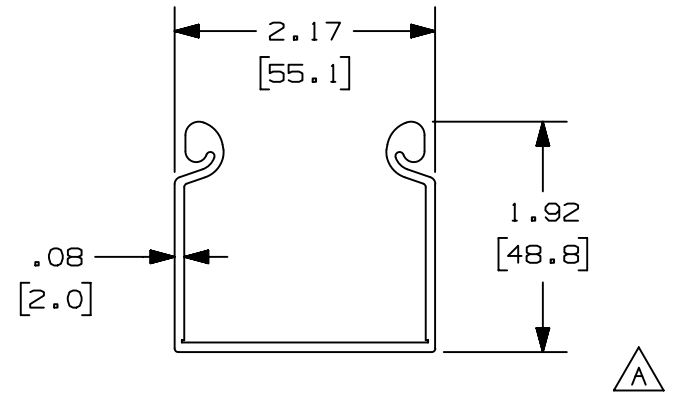
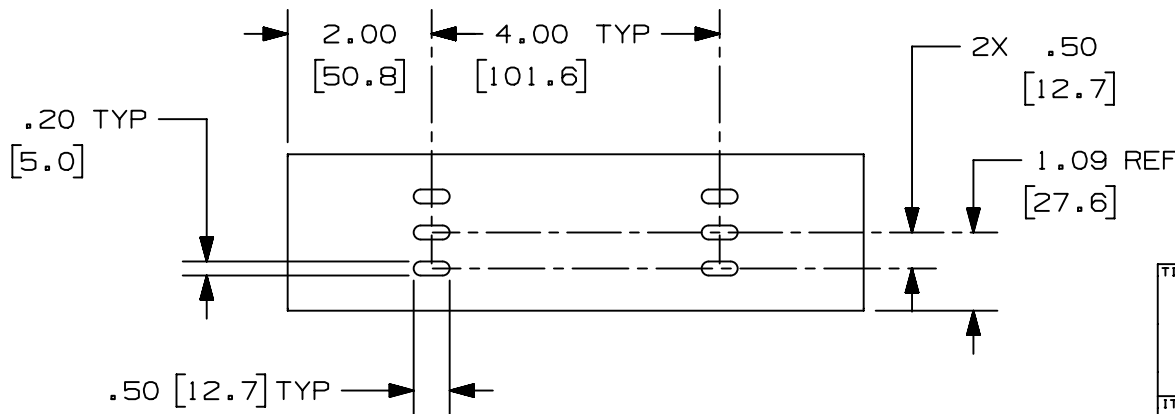
THIS COPY IS PROVIDED ON A RESTRICTED BASIS AND IS NOT TO BE USED IN ANY WAY DETRIMENTAL TO THE INTERESTS OF PANDUIT CORP.

| PANDUIT PART NUMBER      | LENGTH                                | WEIGHT             | WEIGHT/LENGTH           |
|--------------------------|---------------------------------------|--------------------|-------------------------|
| H2X2**2<br>(SEE NOTE 1)  | 78.74 IN ±.18 IN<br>(2000.0mm ±4.6mm) | 1.97 LB<br>(894g)  | 0.30 LB/FT<br>(4.5g/cm) |
| H2X2**6<br>(SEE NOTE 1)  | 72.00 IN ±.18 IN<br>(1828.8mm ±4.6mm) | 1.80 LB<br>(816g)  | 0.30 LB/FT<br>(4.5g/cm) |
| H2X2**3<br>(SEE NOTE 1)  | 118.11 IN ±.18 IN<br>(3000mm ±4.6mm)  | 2.95 LB<br>(1337g) | 0.30 LB/FT<br>(4.5g/cm) |
| H2X2**10<br>(SEE NOTE 1) | 120.00 IN ±.18 IN<br>(3048mm ±4.6mm)  | 3.00 LB<br>(1359g) | 0.30 LB/FT<br>(4.5g/cm) |



**NOTES:**

1. SEE CURRENT CATALOG FOR ADDITIONAL PART SUFFIXES TO INDICATE COLOR AND/OR PACKAGE QUANTITY.
2. DIMENSIONS IN PARENTHESES ARE IN METRIC.



|  |                         |                                    |                      |
|--|-------------------------|------------------------------------|----------------------|
| TITLE<br><b>FIBERRUNNER 2X2 HINGED SLOTTED CHANNEL<br/>H2X2**2, H2X2**6, H2X2**3, H2X2**10</b> |                         | CUSTOMER DRAWING                   |                      |
| ITEM REVISION NAME<br><b>D38258CJ/00</b>   |                         | <b>PANDUIT</b>                     |                      |
| DATASET FILE NAME<br><b>D38258CJ_DC_H2X2/00C</b>   |                         |                                    |                      |
| UNLESS OTHERWISE SPECIFIED,<br>DIMENSIONAL TOLERANCES ARE: IN [ mm ]                           |                         | MATERIAL:<br><b>PVC</b>            |                      |
| .X ± .xxx ±<br>.xx ± .03 [ .8 ] ANGLES ±   |                         | DRAWING NUMBER:<br><b>38258-25</b> |                      |
| THIRD ANGLE PROJECTION   |                         | SHT 1 OF 1                         |                      |
| DRAWN BY<br><b>MSO</b>   | DATE<br><b>01-08-07</b> | CHK<br><b>RN</b>                   | SCALE<br><b>NONE</b> |
| DESCRIPTION  |                         | ECN                                | SIZE<br><b>A</b>     |

| REV | DATE      | BY  | CHK  | APR  | DESCRIPTION                             | ECN         |
|-----|-----------|-----|------|------|---|-------------|
| 2   | 5/11/2021 | MES | PATR | PATR | ADDED PART NUMBERS H2X2**3, H2X2**10    | V09002MM/00 |
| 1   | 05-03-13  | JBN | RTFI | RN   | A. UPDATED DRAWING BORDER & TITLE BLOCK | 38258-25    |
| R   | 01-08-07  | MSO | RN   | RN   | RELEASED TO PRODUCTION                  | 38258-25    |

D10100DA/15