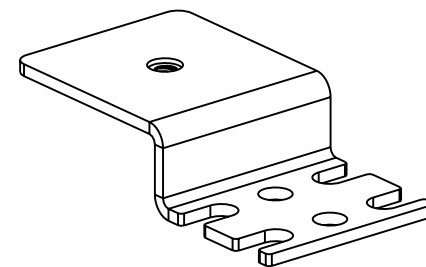


PANDUIT PART NUMBER	WEIGHT
FZBLP	0.14 LB/EACH (65g/EACH)

**NOTES:**

1. SEE CURRENT CATALOG FOR ADDITIONAL PART SUFFIXES TO INDICATE COLOR AND/OR PACKAGE QUANTITY.
2. THE FIBER ROUTING LOW PROFILE "Z" BRACKET ALLOWS FOR FIBER-DUCT 2x2 AND 4x4 SOLID OR SLOTTED WALL CHANNEL, FIBERRUNNER 2x2 HINGED SOLID OR SLOTTED CHANNEL AND PANDUCT 4x4 HINGED SOLID OR SLOTTED WIRING DUCT TO BE ATTACHED VERTICALLY TO THE FRONT OR REAR OF TELCO OR TIA/EIA STYLE RACKS.
3. THE FIBER ROUTING LOW PROFILE "Z" BRACKET INCLUDES: ONE (1) BRACKET ASSEMBLY, ONE (1) #10-32x1/2 PHILLIPS TRUSS HEAD MACHINE SCREW, FOUR (4) #12-24x1/2 TYPE I COMBINATION DRIVE ROUND HEAD MACHINE SCREWS, DOG POINTED.
4. FINISH COLOR: BLACK (EXCEPT FOR HARDWARE)
5. DIMENSIONS IN PARENTHESES ARE IN METRIC.



ENG. REF.: D39458BC\_DC\_FZBLP\_00.prt

CAD FILENAME/LAYERS		FZBLP.pdf	
<h1>PANDUIT</h1> CORP TINLEY PARK, ILLINOIS FIBER ROUTING LOW PROFILE "Z" BRACKET (FZBLP) CUSTOMER DRAWING			
UNLESS OTHERWISE SPECIFIED, DIMENSIONAL TOLERANCES ARE:		UNLESS OTHERWISE SPECIFIED, ALL DIMENSIONS ARE GIVEN IN INCHES, THIRD ANGLE PROJECTION.	
(.X) ±	(.XXX) ±		
(.XX) ± .03 (.8)	ANGLES ±		
DRAWN BY	MAT'L:	SCALE	
MSO	STEEL	NONE	
DATE		DRAWING NO.	DWG
8-9-06		39458-04	A
CHK'D			SIZE
SMF			

REV	DATE	BY	CHK	DESCRIPTION	ECN	R	CUST	SUP	GMBH
R	8-9-06	MSO	SMF	RELEASED TO PRODUCTION	39458-04	RN	RN		