



|   |                                 |                 |                              |                          |
|---|---------------------------------|-----------------|------------------------------|--------------------------|
| Product designation                                 |                                 |                 |                              | Auxiliary contactor      |
| Product type designation                            |                                 |                 |                              | BG00                     |
| <b>Contact characteristics</b>                      |                                 |                 |                              |                          |
| Number of poles                                     | Nr.                             |                 |                              | 4                        |
| Rated insulation voltage $U_i$ IEC/EN               | V                               |                 |                              | 690                      |
| Rated impulse withstand voltage $U_{imp}$           | kV                              |                 |                              | 6                        |
| Operational frequency                               | min                             | Hz              | 25                           |                          |
|   | max                             | Hz              | 400                          |                          |
| IEC Conventional free air thermal current $I_{th}$  | A                               |                 |                              | 10                       |
| Protection fuse                                     | gG (IEC)                        |                 | A                            | 16                       |
|   | Tightening torque for terminals |                 |                              |                          |
|   | min                             | Nm              | 0.8                          |                          |
|   | max                             | Nm              | 1                            |                          |
|   | min                             | lbin            | 9                            |                          |
|   | max                             | lbin            | 9                            |                          |
| Tightening torque for coil terminal                 | min                             | Nm              | 0.8                          |                          |
|   | max                             | Nm              | 1                            |                          |
|   | min                             | lbin            | 9                            |                          |
|   | max                             | lbin            | 9                            |                          |
| Max number of wires simultaneously connectable      | Nr.                             |                 |                              | 2                        |
| Conductor section                                   | AWG/Kcmil                       |                 |                              |                          |
|   |                                 |                 | max                          | 12                       |
| Flexible w/o lug conductor section                  | min                             | mm <sup>2</sup> | 0.75                         |                          |
|   | max                             | mm <sup>2</sup> | 2.5                          |                          |
| Flexible c/w lug conductor section                  | min                             | mm <sup>2</sup> | 1.5                          |                          |
|   | max                             | mm <sup>2</sup> | 2.5                          |                          |
| Flexible with insulated spade lug conductor section | min                             | mm <sup>2</sup> | 1.5                          |                          |
|   | max                             | mm <sup>2</sup> | 2.5                          |                          |
| Power terminal protection according to IEC/EN 60529 |                                 |                 |                              | IP20 when properly wired |
| <b>Mechanical features</b>                          |                                 |                 |                              |                          |
| Operating position                                  | normal allowable                |                 | Vertical plan $\pm 30^\circ$ |                          |
|   |                                 |                 | Screw / DIN rail 35mm        |                          |
| Fixing  |                                 |                 |                              | Screw / DIN rail 35mm    |
| Weight  |                                 |                 |                              | g 222                    |

|  |                             |  |  |                 |                 |
|--|-----------------------------|--|--|-----------------|-----------------|
| Conductor section                                  | AWG/kcmil conductor section |  |  | max             | 12              |
| <b>Auxiliary contact characteristics</b>           |                             |  |  |                 |                 |
| Thermal current I <sub>th</sub>                    |                             |  |  | A               | 10              |
| IEC/EN 60947-5-1 designation                       |                             |  |  | A600 - Q600     |                 |
| Operating current AC15                             |                             |  |  | 230V            | A 3             |
|  |                             |  |  | 400V            | A 1.9           |
|  |                             |  |  | 500V            | A 1.4           |
| Operating current DC12                             |                             |  |  | 110V            | A 2.9           |
| Operating current DC13                             |                             |  |  | 24V             | A 2.9           |
|  |                             |  |  | 48V             | A 1.4           |
|  |                             |  |  | 60V             | A 1.2           |
|  |                             |  |  | 110V            | A 0.6           |
|  |                             |  |  | 125V            | A 0.55          |
|  |                             |  |  | 220V            | A 0.3           |
|  |                             |  |  | 600V            | A 0.1           |
| <b>Operations</b>                                  |                             |  |  |                 |                 |
| Mechanical life                                    |                             |  |  | cycles          | 20000000        |
| <b>Safety related data</b>                         |                             |  |  |                 |                 |
| Performance level B10d according to EN/ISO 13489-1 |                             |  |  | mechanical load | cycles 20000000 |
| Mirror contacts according to IEC/EN 60947-4-1      |                             |  |  | YES             |                 |
| EMC compatibility                                  |                             |  |  | yes             |                 |
| <b>DC coil operating</b>                           |                             |  |  |                 |                 |
| DC rated control voltage                           |                             |  |  | V               | 48              |
| DC operating voltage                               |                             |  |  |                 |                 |
|  | pick-up                     |  |  | min             | %Us 75          |
|  |                             |  |  | max             | %Us 115         |
|  | drop-out                    |  |  | min             | %Us 10          |
|  |                             |  |  | max             | %Us 20          |
| Average coil consumption ≤20°C                     |                             |  |  | in-rush         | W 3.2           |
|  |                             |  |  | holding         | W 3.2           |
| <b>Max cycles frequency</b>                        |                             |  |  |                 |                 |
| Mechanical operation                               |                             |  |  | cycles/h        | 3600            |
| <b>Operating times</b>                             |                             |  |  |                 |                 |
| Average time for U <sub>s</sub> control            | in AC                       |  |  |                 |                 |
|  | Closing NO                  |  |  | min             | ms 12           |
|  |                             |  |  | max             | ms 21           |
|  | Opening NO                  |  |  | min             | ms 9            |
|  |                             |  |  | max             | ms 18           |
|  | Closing NC                  |  |  | min             | ms 17           |
|  |                             |  |  | max             | ms 26           |

|       |            |     |    |    |
|-------|------------|-----|----|----|
|       | Opening NC | min | ms | 7  |
|       |            | max | ms | 17 |
| in DC |            |     |    |    |
|       | Closing NO | min | ms | 18 |
|       |            | max | ms | 25 |
|       | Opening NO | min | ms | 2  |
|       |            | max | ms | 3  |
|       | Closing NC | min | ms | 3  |
|       |            | max | ms | 5  |
|       | Opening NC | min | ms | 11 |
|       |            | max | ms | 17 |

**UL technical data**

**General USE**

Contactor

AC current A 10

Contact rating of auxiliary contacts according to UL

A600 - Q600

**Ambient conditions**

**Temperature**

Operating temperature

min °C -50  
max °C +70

Storage temperature

min °C -60  
max °C +80

Max altitude

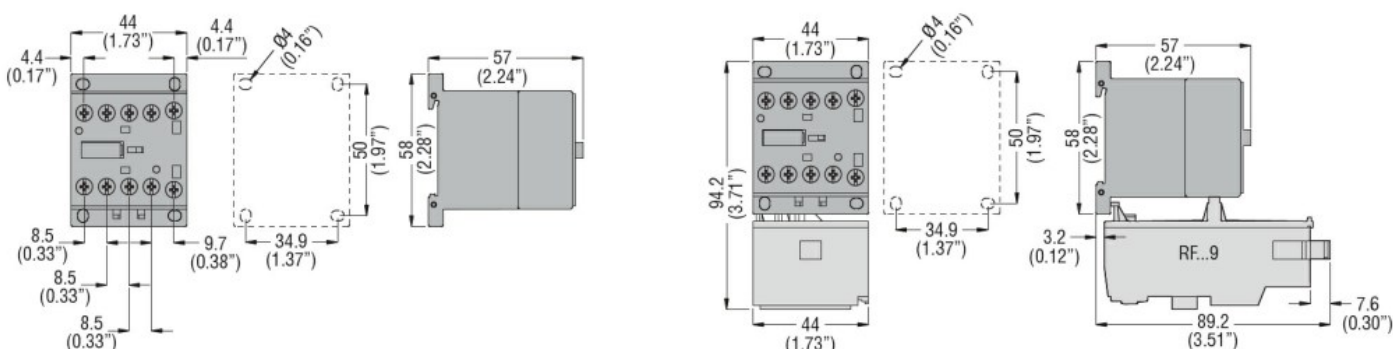
m 3000

**Resistance & Protection**

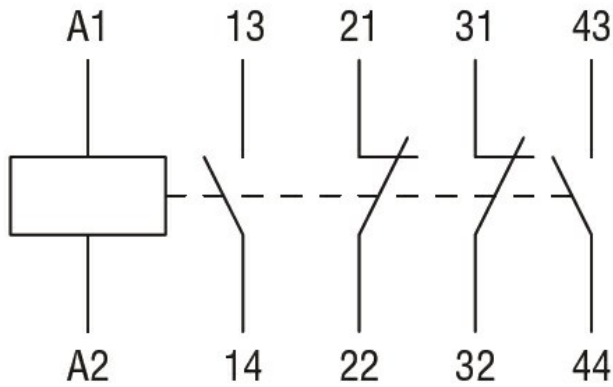
Pollution degree

3

**Dimensions**



**Wiring diagrams**



**Certifications and compliance**

Compliance

CSA C22.2 n° 60947-1

CSA C22.2 n° 60947-5-1

IEC/EN 60947-1

IEC/EN 60947-5-1

UL 60947-1

UL 60947-5-1

Certificates

cULus

EAC

**ETIM classification**

ETIM 8.0

EC000196 -  
 Contactor relay