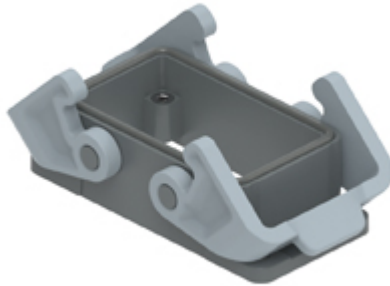


Part number
TCHI 10



Bulkhead mounting housing, T-TYPE series,
 with 2 levers, size "57.27"

Product description	
Product type	Bulkhead mounting housing
Series	T-TYPE
Closing type	With 2 levers
Size	Size 57.27
Cable entry	Without cable entry
Technical data	
IP degree of protection	IP65
Further technical details	
Weight	81,00 g
Operating temperature range (min, max)	-40°C ... +90°C

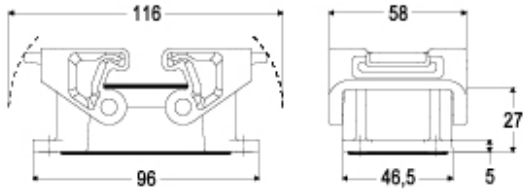
Material properties	
Main material	Polypropylene (PP)
Other materials	Lever: Polyamide (PA) Gasket: polyurethane (PUR)
Colour	RAL 7012 grey, RAL 7001 grey
RoHs conformity	Compliant
China RoHs - EFUP	E
REACH SVHC substances	No
Approvals / Standards	
UL	ECBT2
cUL	ECBT8
General ordering information	
EAN13 code	8015747168540
eCl@ss 8.1	27440202
ETIM 7.0	EC000437
Packaging Information	
Packaging length	305,00 mm
Packaging height	180,00 mm
Packaging width	275,00 mm
Packaging weight	3,34 kg
Packaging volume	15,10 dm ³
Packaging description	Carton box
Packaging quantity	40 Pcs
Packaging EAN code	8015747170147
Sub-packaging weight	0,42 kg
Sub-packaging description	Plastic packaging
Sub-packaging quantity	5 Pcs
Sub-packaging EAN barcode	8015747170154

Part number

TCHI 10



Catalogue drawings



Notes

Dimensions shown in mm are not binding and may be changed without notice.
