

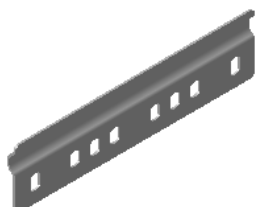
**P31 - ECLISSE H60**  
*P31 - COUPLER H60*



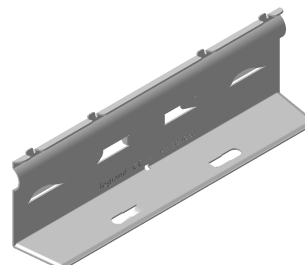
ECLISSE EA 50-60  
*COUPLER EA 50-60*



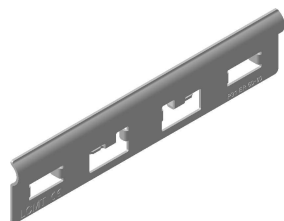
ECLISSE EP 50-60  
*COUPLER EP 50-60*



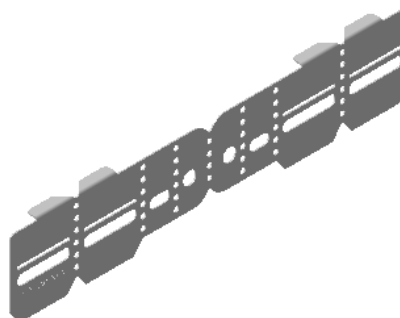
ECLISSE ECLIC 60  
*COUPLER ECLIC 60*



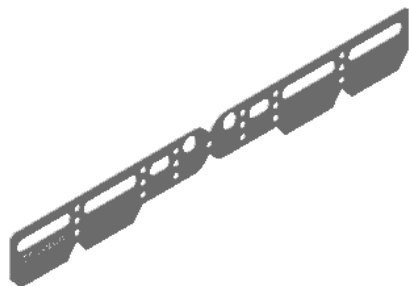
ECLISSE ER 50-60  
*COUPLER ER 50-60*



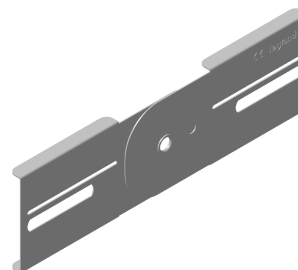
ECLISSE UNIVERSELLE EDU 60  
*UNIVERSAL COUPLER EDU 60*



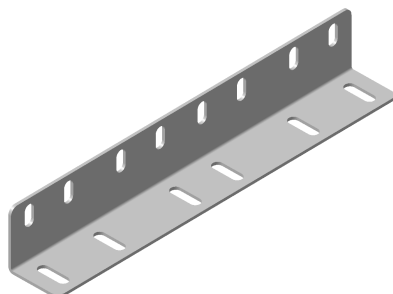
ECLISSE UNIVERSELLE EDU POUR COUVERCLE 60  
*UNIVERSAL COUPLER EDU FOR COVER 60*



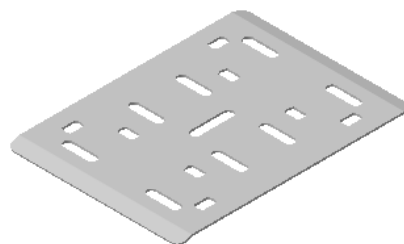
ECLISSE EV 60  
*COUPLER EV 60*



HD ECLISSE EXTERNE CORNIERE 60  
*HD EXTERNAL COUPLER 60*



ECLISSE FOND  
*BOTTOM COUPLER*



**P31 - ECLISSE H60**  
**P31 - COUPLER H60**

 Référence(s): 341562/341213/480221/487472/481169/487980/481232/  
 482219/343562/343213/487473/482169/483232/483219/  
 Item(s): 485230/485226/485227/485232/486232/486562/486213/  
 486789/481179/481180/481181/481182/481183/482304/  
 482305/482306/482307/482308

**1. GAMME/RANGE**

P31 - ECLISSE H60 GS

P31 - COUPLER H60 PG

Designation Description	Code	Poids Weight (Kg)	Épaisseur Thickness (mm)	Matière Raw Material	Norme matière Standard Raw Material	Finition Coating	Norme Finition Standard Coating
P31 - EA 50-60 GS P31 - EA COUPLER 50-60 PG	341562	0,03	1,4	DX51D + Z200	EN 10346	GS/PG/Z	EN 10346
P31 - ECLISSE EP 50-60 GS P31 - COUPLER EP 50-60 PG	341213	0,10	1,4	DX51D + Z200	EN 10346	GS/PG/Z	EN 10346
P31 - ECLISSE ECLIC 60 GS P31 - COUPLER ECLIC 60 PG	480221	0,15	1	DX51D + Z200	EN 10346	GS/PG/Z	EN 10346
P31 - HD ECLISSE EXTERNE CORNIERE H60 GS P31 - HD EXTERNAL COUPLER H60 PG	487472	0,29	2	DX51D + Z200	EN 10346	GS/PG/Z	EN 10346
P31 - ECLISSE UNIVERSELLE EDU H60 GS P31 - UNIVERSAL COUPLER EDU H60 PG	481169	0,13	0,95	DX51D + Z200	EN 10346	GS/PG/Z	EN 10346
P31 - ECLISSE UNI.EDU FOR COVER H60 GS P31 - UNIVERSAL COUPLER EDU FOR COVER H60 PG	487980	0,08	0,95	DX51D + Z200	EN 10346	GS/PG/Z	EN 10346
P31 - EV GS P31 - UNIVERSAL COUPLER EV H60 PG	481232	0,11	0,75	DX51D + Z200	EN 10346	GS/PG/Z	EN 10346
P31 - ECLISSE ER H60 GS P31 - COUPLER ER H60 PG	482219	0,10	1,4	DX51D + Z200	EN 10346	GS/PG/Z	EN 10346

 Classe de résistance contre la corrosion 3 (IEC 61537)  
 Corrosion resistance classification 3 (IEC 61537)

P31 - ECLISSE H60 GC

P31 - COUPLER H60 HDG

Designation Description	Code	Poids Weight (Kg)	Épaisseur Thickness (mm)	Matière Raw Material	Norme matière Standard Raw Material	Finition Coating	Norme Finition Standard Coating
P31 - EA 50-60 GC P31 - EA COUPLER 50-60 HDG	343562	0,03	1,4	DC01	EN 10130	GC/HDG/C	ISO 1461
P31 - ECLISSE EP 50-60 GC P31 - COUPLER EP 50-60 HDG	343213	0,10	1,4	DC01	EN 10130	GC/HDG/C	ISO 1461
P31 - HD ECLISSE EXTERNE CORNIERE H60 GC P31 - HD EXTERNAL COUPLER H60 HDG	487473	0,29	2	DC01	EN 10130	GC/HDG/C	ISO 1461
P31 - ECLISSE UNIVERSELLE EDU H60 GC P31 - UNIVERSAL COUPLER EDU H60 HDG	482169	0,13	0,95	DC01	EN 10130	GC/HDG/C	ISO 1461
P31 - EV GC P31 - UNIVERSAL COUPLER EV H60 HDG	483232	0,11	0,75	DC01	EN 10130	GC/HDG/C	ISO 1461
P31 - ECLISSE ER H60 GC P31 - COUPLER ER H60 HDG	483219	0,10	1,4	DC01	EN 10130	GC/HDG/C	ISO 1461

 Classe de résistance contre la corrosion 6 (IEC 61537)  
 Corrosion resistance classification 6 (IEC 61537)

**P31 - ECLISSE H60**  
**P31 - COUPLER H60**

 Référence(s): 341562/341213/480221/487472/481169/487980/481232/  
 482219/343562/343213487473/482169/483232/483219/  
 Item(s): 485230/485226/485227/485232/486232/486562/486213/  
 486789/481179/481180/481181/481182/481183/482304/  
 482305/482306/482307/482308

**1. GAMME/RANGE**

 P31 - ECLISSE H60 ZM  
 P31 - COUPLER H60 ZM

Designation Description	Code	Poids Weight (Kg)	Épaisseur Thickness (mm)	Matière Raw Material	Norme matière Standard Raw Material	Finition Coating	Norme Finition Standard Coating
P31 - ECLISSE EP 50-60 ZM P31 - COUPLER EP 50-60 ZM	485230	0,10	1,5	DX51D + ZM310 A-C	EN 10346	Zn-Mg	EN 10346
P31 - ECLISSE UNIVERSELLE EDU H60 ZM P31 - UNIVERSAL COUPLER EDU H60 ZM	485226	0,13	1	DX51D + ZM310 A-C	EN 10346	Zn-Mg	EN 10346
P31 - EV ZM P31 - UNIVERSAL COUPLER EV H60 ZM	485227	0,11	0,8	DX51D + ZM310 A-C	EN 10346	Zn-Mg	EN 10346
P31 - ECLISSE ER H60 ZM P31 - COUPLER ER H60 ZM	485232	0,10	1,5	DX51D + ZM310 A-C	EN 10346	Zn-Mg	EN 10346

 Classe de résistance contre la corrosion 8 (IEC 61537)  
 Corrosion resistance classification 8 (IEC 61537)

 P31 - ECLISSE H60 RAL  
 P31 - COUPLER H60 RAL

Designation Description	Code	Poids Weight (Kg)	Épaisseur Thickness (mm)	Matière Raw Material	Norme matière Standard Raw Material	Finition Coating	Norme Finition Standard Coating
P31 - EV RAL P31 - UNIVERSAL COUPLER EV H60 RAL	486232	0,11	0,75	DX51D + Z200	EN 10346	RAL 9010	---

 Classe de résistance contre la corrosion 3 (IEC 61537)  
 Corrosion resistance classification 3 (IEC 61537)

 P31 - ECLISSE H60 INOX  
 P31 - COUPLER H60 STAINLESS STEEL

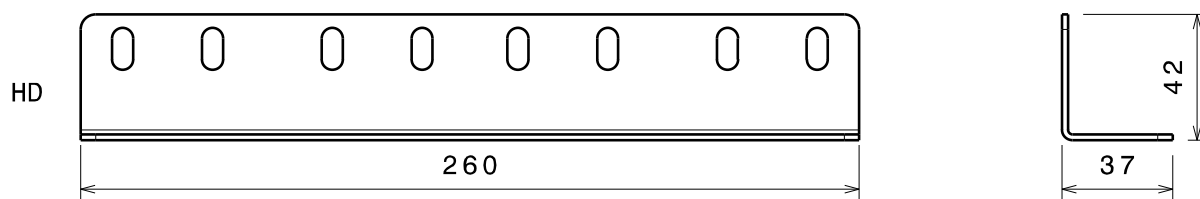
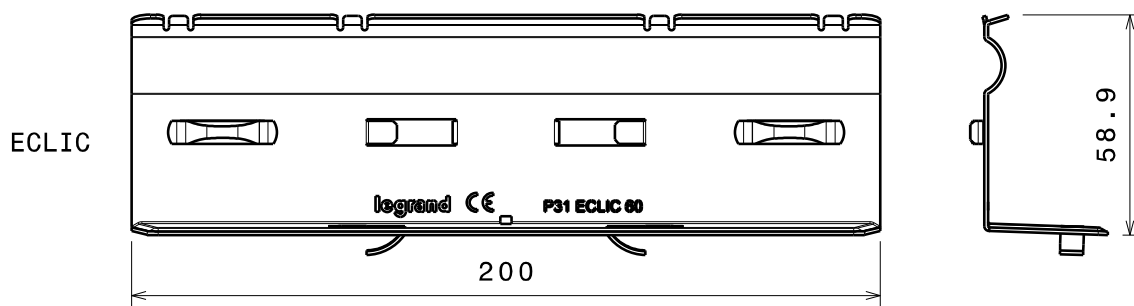
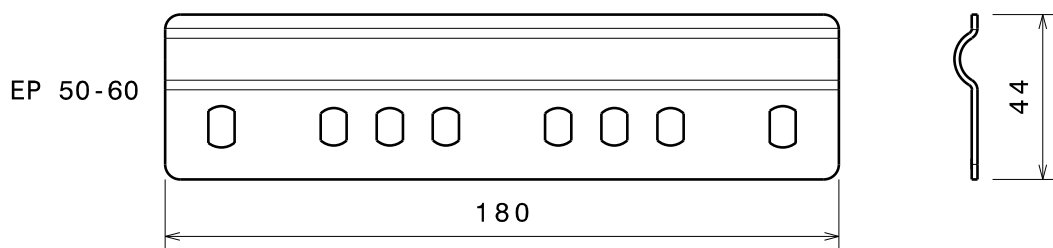
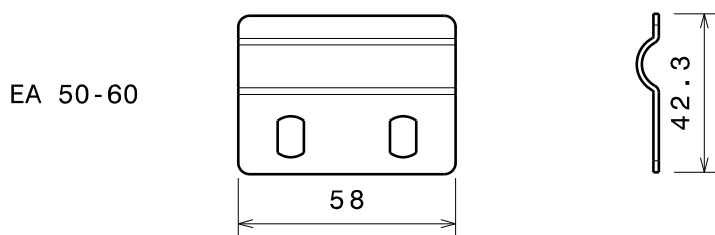
Designation Description	Code	Poids Weight (Kg)	Épaisseur Thickness (mm)	Matière Raw Material	Norme matière Standard Raw Material	Finition Coating	Norme Finition Standard Coating
P31 - EA 50-60 SS316L P31 - EA COUPLER 50-60 SS316L	486562	0,03	1,4	X2CrNiMo17-12-2	EN 10088	SS316L	EN 10088
P31 - ECLISSE EP 50-60 SS316L P31 - COUPLER EP 50-60 SS316L	486213	0,10	1,4	X2CrNiMo17-12-2	EN 10088	SS316L	EN 10088
P31 - ECLISSE UNIVERSELLE EDU H60 SS316L P31 - UNIVERSAL COUPLER EDU H60 SS316L	486789	0,13	0,95	X2CrNiMo17-12-2	EN 10088	SS316L	EN 10088

 Classe de résistance contre la corrosion 9B (IEC 61537)  
 Corrosion resistance classification 9B (IEC 61537)

P31 - ECLISSE H60  
P31 - COUPLER H60

Référence(s): 341562/341213/480221/487472/481169/487980/481232/  
482219/343562/343213/487473/482169/483232/483219/  
Item(s): 485230/485226/485227/485232/486232/486562/486213/  
486789/481179/481180/481181/481182/481183/482304/  
482305/482306/482307/482308

2. DIMENSIONS (mm)

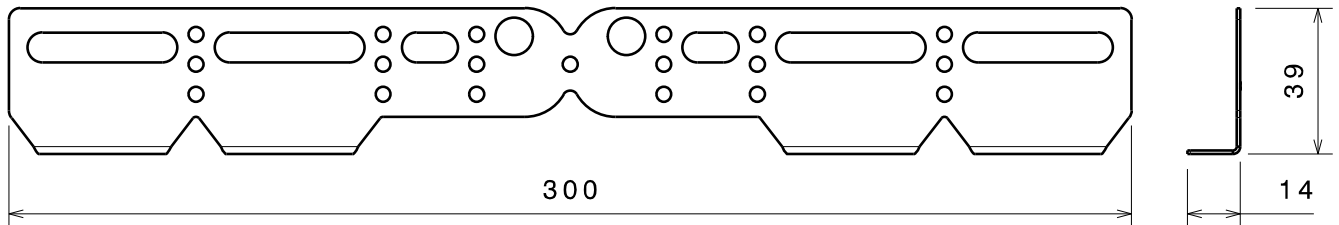


**P31 - ECLISSE H60**  
**P31 - COUPLER H60**

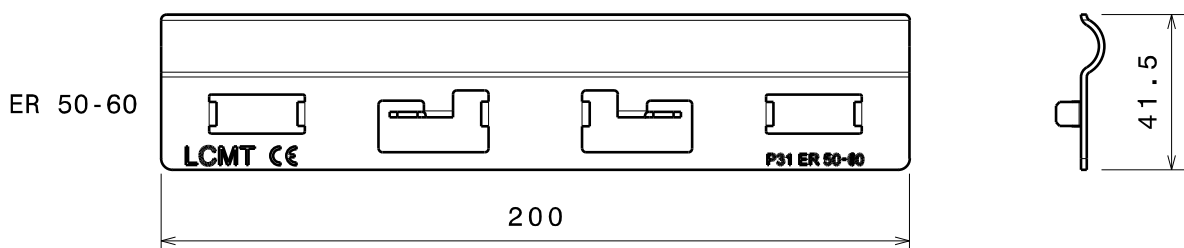
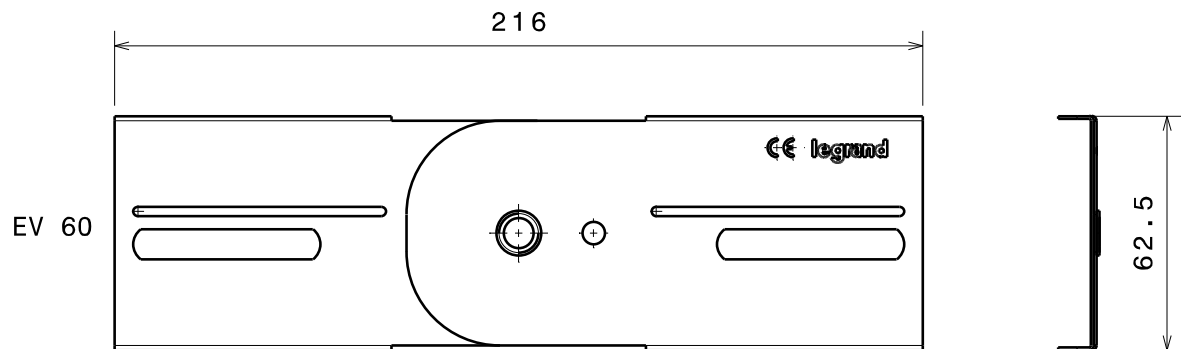
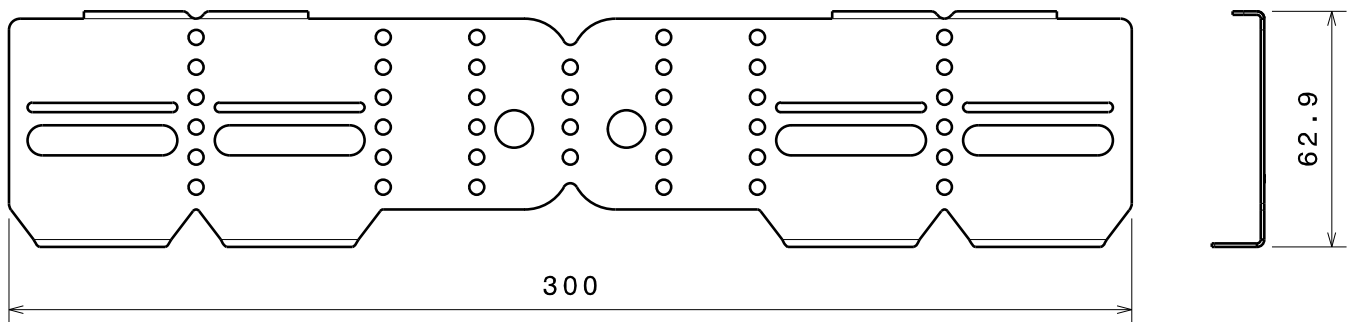
Référence(s): 341562/341213/480221/487472/481169/487980/481232/  
482219/343562/343213/487473/482169/483232/483219/  
Item(s): 485230/485226/485227/485232/486232/486562/486213/  
486789/481179/481180/481181/481182/481183/482304/  
482305/482306/482307/482308

**2. DIMENSIONS (mm)**

EDU 60 FOR COVER



EDU 60

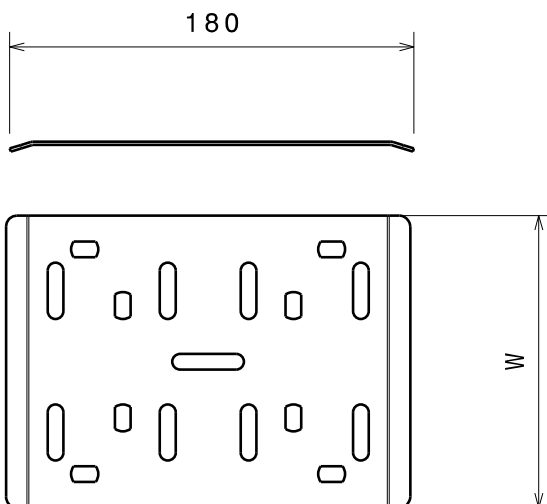


P31 - ECLISSE H60  
P31 - COUPLER H60

Référence(s): 341562/341213/480221/487472/481169/487980/481232/  
482219/343562/343213/487473/482169/483232/483219/  
Item(s): 485230/485226/485227/485232/486232/486562/486213/  
486789/481179/481180/481181/481182/481183/482304/  
482305/482306/482307/482308

2. DIMENSIONS (mm)

ECLISSE FOND  
BOTTOM COUPLER



Designation Description	Code GS/PG	Code GC/HDG	Largeur Width W (mm)
ECLISSE FOND PERF 200 PERFORATED BOTTOM COUPLER 200	481179	482304	130
ECLISSE FOND PERF 300 PERFORATED BOTTOM COUPLER 300	481180	482305	230
ECLISSE FOND PERF 400 PERFORATED BOTTOM COUPLER 400	481181	482306	320
ECLISSE FOND PERF 500 PERFORATED BOTTOM COUPLER 500	481182	482307	420
ECLISSE FOND PERF 600 PERFORATED BOTTOM COUPLER 600	481183	482308	520