

|   |                   |      |      |  |
|---|-------------------|------|------|--|
| Product designation                                       |                   |      |      | Rotary cam switches  |
| Product type designation                                  |                   |      |      | GX16   |
| <b>General characteristics</b>                            |                   |      |      |  |
| Switching diagram   |                   |      |      | 68 - Voltmeter switch for phase-neutral voltages                           |
| N° of elements  |                   |      |      | 2  |
| Mounting form   |                   |      |      | U47 - Snap on front mounting with black handle for hole diam. 22mm finxing |
| <b>Contact characteristics</b>                            |                   |      |      |  |
| Rated insulation voltage $U_i$                            | IEC/EN            | V    | 690  |  |
|   | UL/CSA            | V    | 600  |  |
| Rated impulse withstand voltage $U_{imp}$                 |                   |      | kV   | 6  |
| Conventional free air thermal current $I_{th}$            | IEC/EN            | A    | 16   |  |
|   | UL/CSA            | A    | 12   |  |
| Rated operational voltage                                 |                   |      | V    | 440  |
| Rated operational impulse voltage                         |                   |      | kV   | 4  |
| Maximum fuse size for short-circuit protection $I_n$ (gG) | 10kA              | A    | 16   |  |
|   | 15kA              | A    | 16   |  |
|   | 25kA              | A    | 16   |  |
| Rated short time current $I_{cw}$                         |                   |      | 1s   | A  |
|   |                   |      |      | 250  |
| Conductivity  |                   |      |      | 10/5 mA/V  |
| Operational current $I_e$ IEC/EN                          | AC1/AC21A         |      | A    | 16   |
|   | AC15              |      |      |  |
|   | 110V              | A    | 10   |  |
|   | 220/230V          | A    | 8    |  |
|   | 380/400V          | A    | 4    |  |
|   | 660/690V          | A    | 1.5  |  |
| Rated operational power in AC                             | Three-phase AC-3  |      |      |  |
|   | 220/230V          | kW   | 3.5  |  |
|   | 380/440V          | kW   | 4.5  |  |
|   | 500/690V          | kW   | 5.5  |  |
|   | Single-phase AC-3 |      |      |  |
|   | 110V              | kW   | 0.55 |  |
|   | 220/230V          | kW   | 1.5  |  |
|   | 380/440V          | kW   | 2.2  |  |
|   | Three-phase AC23A |      |      |  |
|   | 220/230V          | kW   | 3.7  |  |
|   | 380/440V          | kW   | 6.5  |  |
|   | 500/690V          | kW   | 7.5  |  |
| Single-phase AC23A  |                   |      |      |  |
| 110V  | kW                | 0.75 |      |  |

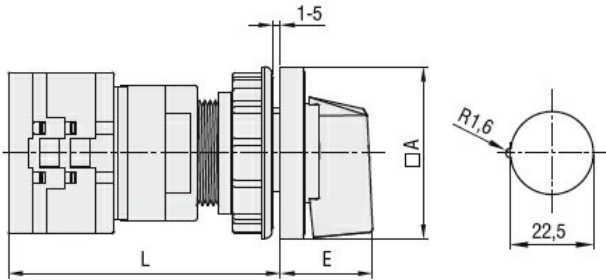
|  |          |                 |                   |
|--|----------|-----------------|-------------------|
|  | 220/230V | kW              | 1.8               |
|  | 380/440V | kW              | 3                 |
| <hr/>                                  |          |                 |                   |
| Rated operational current in DC        |          |                 |                   |
| DC21A                                  |          |                 |                   |
|  | 48V      | A               | 16                |
|  | 60V      | A               | 16                |
|  | 110V     | A               | 4                 |
|  | 220V     | A               | 0.6               |
|  | 440V     | A               | 0.25              |
| <hr/>                                  |          |                 |                   |
| DC23A (poles in series)                |          |                 |                   |
|  | 24V      | A               | 16 (1)            |
|  | 48V      | A               | 16 (2)            |
|  | 60V      | A               | 16 (3)            |
|  | 110V     | A               | 10 (3)            |
|  | 220V     | A               | 7 (4)             |
| <hr/>                                  |          |                 |                   |
| DC13                                   |          |                 |                   |
|  | 24V      | A               | 16                |
|  | 48V      | A               | 14                |
|  | 60V      | A               | 10                |
|  | 110V     | A               | 1                 |
|  | 220V     | A               | 0.4               |
|  | 440V     | A               | 0.15              |
| <hr/>                                  |          |                 |                   |
| Power dissipation                      |          | W               | 0.6               |
| <b>Mechanical features</b>             |          |                 |                   |
| Terminals screw                        |          |                 | 3M                |
| Tightening torque for terminals max    |          | Nm              | 0.5               |
| <hr/>                                  |          |                 |                   |
| Conductor size                         |          |                 |                   |
| AWG - Rigid cable                      |          |                 |                   |
|  | min      | AWG             | 20                |
|  | Max      | AWG             | 12                |
| <hr/>                                  |          |                 |                   |
| AWG - Flexible cable                   |          |                 |                   |
|  | min      | AWG             | 20                |
|  | Max      | AWG             | 12                |
| <hr/>                                  |          |                 |                   |
| Conductor size (IEC) - Flexible cable  |          |                 |                   |
|  | min      | mm <sup>2</sup> | 0.5               |
|  | Max      | mm <sup>2</sup> | 2.5               |
| <hr/>                                  |          |                 |                   |
| Conductor size (IEC) - Rigid cable     |          |                 |                   |
|  | min      | mm <sup>2</sup> | 0.5               |
|  | Max      | mm <sup>2</sup> | 2.5               |
| <hr/>                                  |          |                 |                   |
| Mechanical life                        |          | cycles          | 1X10 <sup>6</sup> |
| <b>UL technical data</b>               |          |                 |                   |
| Motor power for direct-on-line control |          |                 |                   |
| for three-phase motor                  |          |                 |                   |
|  | 120V     | HP              | 1.5               |
|  | 240V     | HP              | 3                 |
|  | 480V     | HP              | 5                 |
|  | 600V     | HP              | 5                 |
| <hr/>                                  |          |                 |                   |
| for single-phase motor                 |          |                 |                   |
|  | 120V     | HP              | 0.75              |
|  | 240V     | HP              | 1                 |
| <hr/>                                  |          |                 |                   |
| <b>Ambient conditions</b>              |          |                 |                   |
| Temperature                            |          |                 |                   |
| Operating temperature                  |          |                 |                   |
|  | min      | °C              | -25               |

|                     |     |    |     |
|---------------------|-----|----|-----|
| Storage temperature | max | °C | +55 |
|                     | min | °C | -40 |
|                     | max | °C | +70 |

**Resistance & Protection**

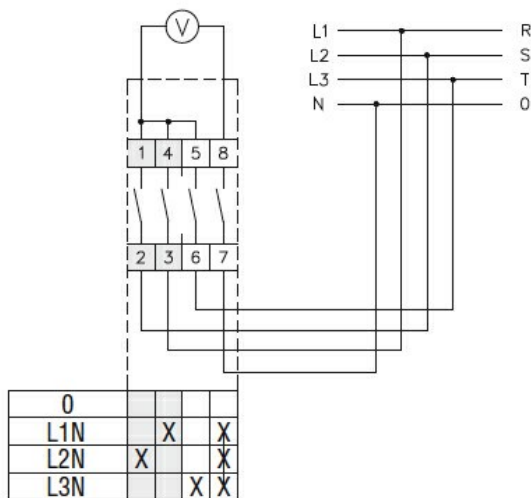
|                     |      |
|---------------------|------|
| Frontal IP degree   | IP65 |
| Terminals IP degree | IP20 |

**Dimensions**



| Series      | Dimensions |      | L    |      |       |       |
|-------------|------------|------|------|------|-------|-------|
|             | □A         | E    | 1    | 2    | 3...8 |       |
| <b>GX16</b> | 48         | 26.5 | 64.9 | 73.4 | 81.9  | 124.4 |
| <b>GX20</b> | 48         | 26.5 | 64.9 | 73.4 | 81.9  | 124.4 |

**Wiring diagrams**



**Certifications and compliance**

**Compliance**

|                     |
|---------------------|
| CSA C22.2 n° 14     |
| IEC/EN/BS 60947-1   |
| IEC/EN/BS 60947-3   |
| IEC/EN/BS 60947-5-1 |
| IEC/EN/BS 61058-1   |
| UL60947-4-1         |

**Certificates**

|       |
|-------|
| cULus |
| EAC   |

**ETIM classification**

ETIM 8.0

EC001029 -  
Selector switch,  
complete