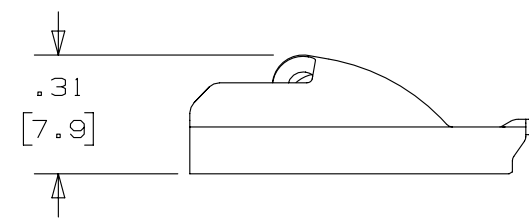
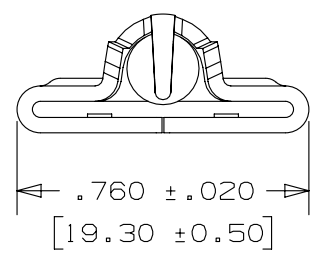
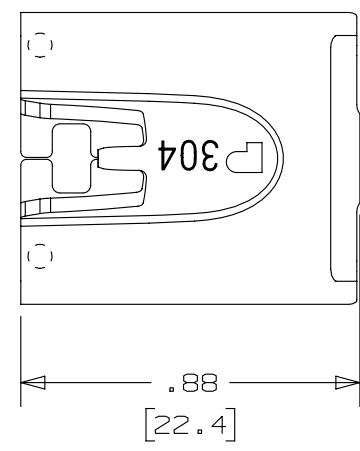


THIS COPY IS PROVIDED ON A RESTRICTED BASIS AND IS NOT TO BE USED IN ANY WAY DETRIMENTAL TO THE INTERESTS OF PANDUIT CORP.

NOTES:

1. TO BE USED WITH PANDUIT METAL BANDING MBSH-TR
2. INSTALLATION TOOL: RT2HT, PBTMT, RT2HTN
3. BRACKETS [] DENOTES DIMENSIONS IN MILLIMETERS
4. MINIMUM LOOP TENSILE STRENGTH: 450 lbs (2002 newtons)
5. TOLERANCES:
 - .X = ±.030 [.762]
 - .XX = ±.020 [.508]
 - .XXX = ±.010 [.254]
 - ANGLES = ±2°
6. MATERIAL: 304 STAINLESS STEEL



| REV | DATE | BY | CHK | APR | DESCRIPTION | ECN |
|-----|-------|------|-----|------|--|------------|
| 03A | 11/13 | MIM | MIM | RGB | 1. PART NUMBER MTHSH-C WAS INCORRECTLY SPECIFIED MTHS-CH | SSECN01115 |
| 02A | 4/13 | JAMB | MIM | RGRO | UPDATE DRAWING TO NEW GLOBAL PANDUIT TITLE BLOCK WITH PANDUIT LOGO | SSECN01049 |
| 01A | 7/11 | JAMB | MIM | --- | ADDED INSTALLATION TOOLS PBTMT & RT2HTN | ----- |
| 00A | 10/08 | JAMB | SKB | --- | ORIG CAD FILE SPEC WAS S41204_00. NOTE #2 - APPLICATION TOOL RT1HT REPLACED BY RT2HT | ----- |
| 00 | 8/05 | JAMB | EJD | --- | DRAWING RELEASED | SS00016 |

| | | | | | |
|--|----------------|------------|--------------|------------|--------------------------------|
| TITLE METAL LOCKING TIE HEAD-SUPER HEAVY DUTY FOR UNCOATED BANDING PART NO. MTHSH-C CUSTOMER DRAWING | | | | | |
| ITEM REVISION NAME N41204BS/03 | | | | | |
| DATASET FILE NAME N41204BS_DC/03A | | | | | |
| UNLESS OTHERWISE SPECIFIED, DIMENSIONAL TOLERANCES ARE: IN [mm] .x ± .1 [2.54] .xxx ± .005 [.127] .xx ± .01 [.25] ANGLES ± 5 ° | | | | | MATERIAL: SEE NOTES |
| THIRD ANGLE PROJECTION | | | | | DRAWING NUMBER: N41204BS_DC |
| DRAWN BY JAMB | DATE 8/9/05 | CHK EJD | SCALE 2:1 | SHT 1 OF 1 | SIZE A |