

Part number

CAN 24



Hood, C-TYPE series, with 4 pegs, top cable entry, size "104.27", for ribbon cable

Product description

Product type	Hood
Series	C-TYPE
Closing type	With 4 pegs
Size	Size 104.27
Cable entry	Top cable entry
Specification	For ribbon cable

Technical data

IP degree of protection	IP66
Further technical details	
Weight	383,00 g
Operating temperature range (min, max)	-40°C...+125°C

Material properties

Colour	RAL 7040 grey
RoHs conformity	Compliant
China RoHs - EFUP	E
REACH SVHC substances	No

Approvals / Standards

Certifications	DNV, BV
UL	ECBT2
cUL	ECBT8

General ordering information

EAN13 code	8015747167680
eCl@ss 8.1	27440202
ETIM 7.0	EC000437

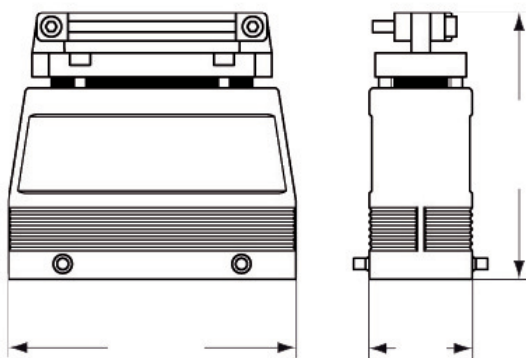
Packaging Information

Sub-packaging weight	0,38 kg
Sub-packaging description	Plastic packaging
Sub-packaging quantity	1 Pcs
Sub-packaging EAN barcode	8015747167758

Part number
CAN 24



Catalogue drawings



Notes

Dimensions shown in mm are not binding and may be changed without notice.
