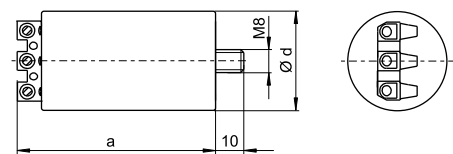


## Pulse Ignitors for HS and HI Lamps up to 1000 W

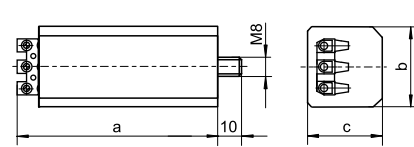
With automatic switch-off  
 For high pressure sodium lamps (HS),  
 metal halide lamps (HI) and  
 ceramic discharge lamps (C-HI)  
 Max. permitted casing temperature: 95 °C  
 Screw terminals: 0.75–2.5 mm<sup>2</sup>  
 Fastening: male nipple with pre-assembled  
 washer and nut  
 For luminaires of protection class I  
 This pulse ignitor is only for use with ballasts that  
 have a dedicated tapping, as this determines the  
 size of the ignition voltage.



**Al casing**



**PC casing**



### For HS lamps 50 to 1000 W, HI lamps 35 to 1000 W and C-HI lamps 35 to 400 W

Type	Ref. No.	Voltage AC 50–60 Hz V	Number of ignition pulses per mains period	Ignition voltage kV	Load capacity pF	Programmed switch-off time sec./Hz	Casing			Weight g
							a mm	b mm	c mm	
<b>Plastic casing (PC)</b>										
PZ 1000 K D20	<b>142784*</b>	220–240 ±10%	≥ 2	1.8–2.3/4–5	20–1000	1216/50–60	74	34	27	100

With IPP technology

\* Suitable ballasts (type: NaHJ...PZT) are available on request

### For HS lamps 600 to 1000 W/400 V and HI lamps 1000 W/400 V

Type	Ref. No.	Voltage AC 50–60 Hz V	Number of ignition pulses per mains period	Ignition voltage kV	Load capacity pF	Programmed switch-off time sec./Hz	Casing d (Ø) mm	a mm	b mm	c mm	Weight g
PZ 1000/400 V A5	<b>142783*</b>	380–420	≥ 1	4–5	20–800	300/50	40	80	—	—	155

\* Suitable ballasts (type: NaHJ...PZT) are available on request