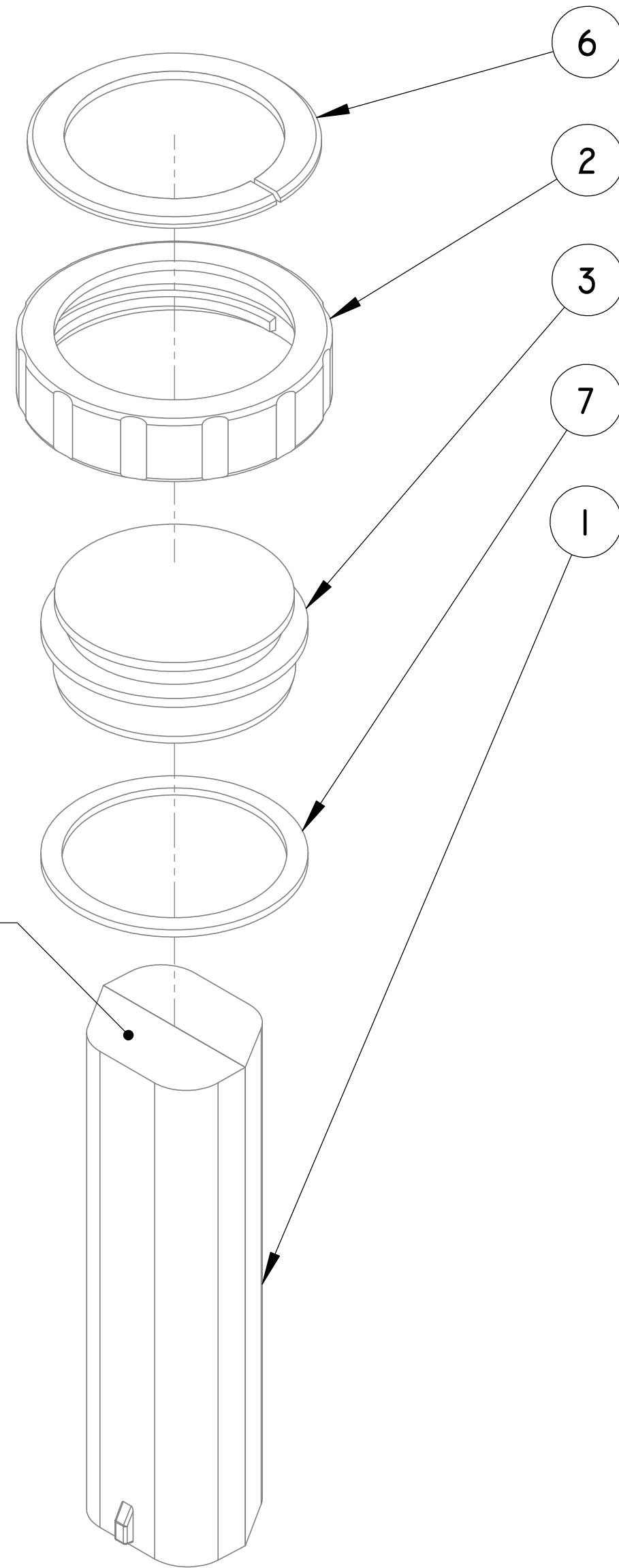
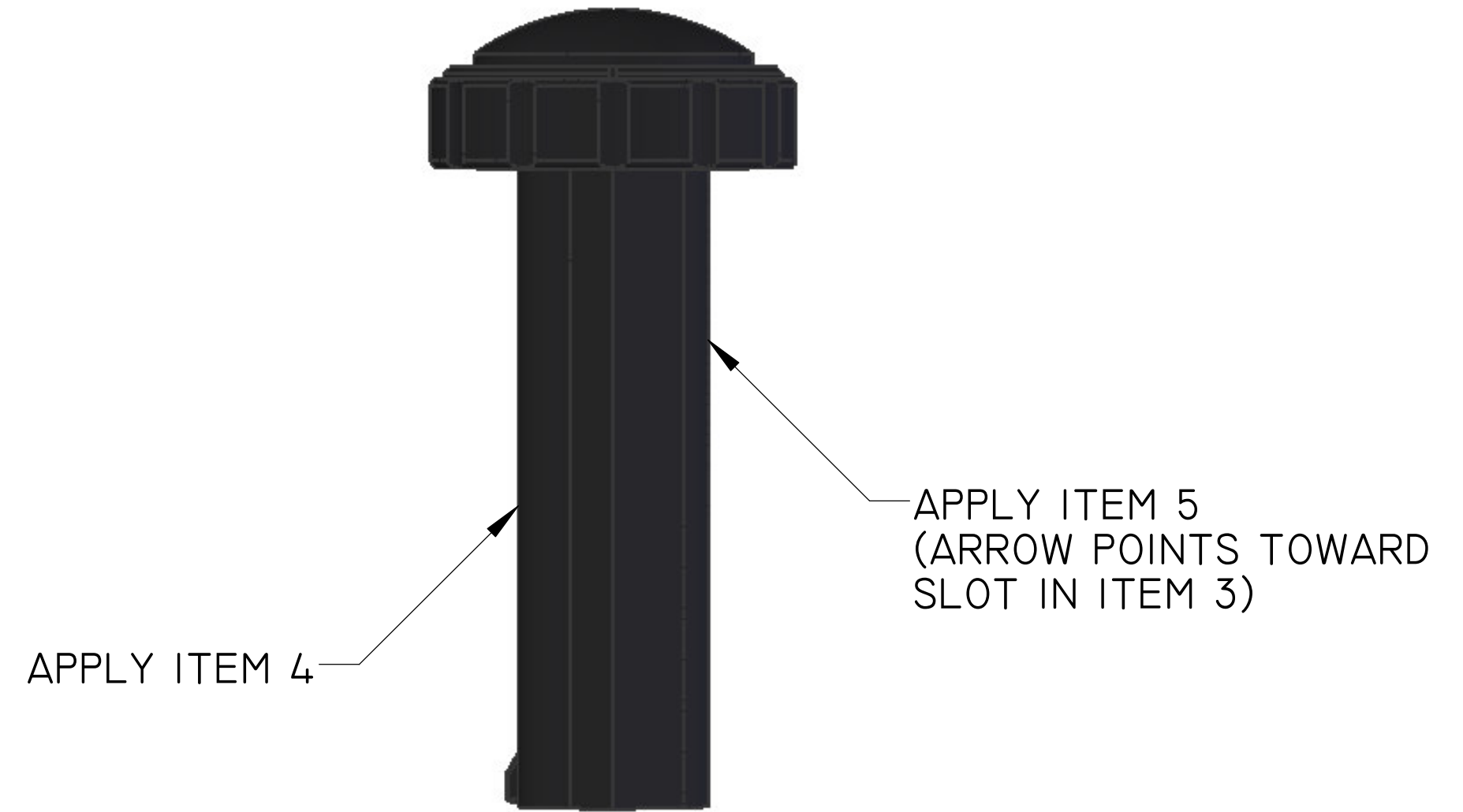


NOTES:

REVISIONS					
REV	ZONE	DESCRIPTION	ECN#	DATE	APPROVED
A	ALL	INITIAL RELEASE (SUPERCEDES ASY-0006-00)	256	08-21-07	RMM



APPLY METHYL ETHYL KETONE WITH A SMALL BRUSH TO END OF BATTERY ASSEMBLY. INSERT INTO COVER (ITEM 3).



ITEM NO.	PART NUMBER	DESCRIPTION	QTY.
1	I00709	BATTERY PACK-PLIII KEYED 9.6V NIMH	1
2	I00712	NUT-PL3 KEYED BATTERY PACK	1
3	COV-0001-00	COVER POWER HANDLE PL3	1
4	LAB-0001-00	LABEL QA WRITE-ON TAMPER-EVIDENT (NOT SHOWN)	1
5	LAB003	LABEL SELF ADHESIVE LASER AND CHARGER HANDLE INSTALLATION ARROW (NOT SHOWN)	1
6	RIN-0000-00	RING RETAINER COVER POWER PL3	1
7	SEA-0006-00	SEAL POWER ASSY PL3	1

PROPRIETARY AND CONFIDENTIAL
THE INFORMATION CONTAINED IN THIS DRAWING IS THE SOLE PROPERTY OF LASERCRAFT, INC. ANY REPRODUCTION IN PART OR AS A WHOLE WITHOUT THE WRITTEN PERMISSION OF LASERCRAFT, INC. IS PROHIBITED.

UNLESS OTHERWISE SPECIFIED:		DATE	NAME	LASERCRAFT INC. 1450 OAKBROOK DRIVE - STE 900 NORCROSS, GA 30093
DIMENSIONS ARE IN MILLIMETERS		08-21-07	RMM	
TOLERANCES:		CHECKED		TITLE: BATTERY ASSY-PLIII KEYED
FRACTIONAL: ±		ENG APPR.		
ANGULAR: MACH ± BEND ±		MFG APPR.		
TWO PLACE DECIMAL ±.10MM		Q.A.		SIZE DWG. NO. REV C 100710 A
THREE PLACE DECIMAL ±.005'		COMMENTS:		
NEXT ASSY	USED ON	FINISH	SEE NOTES	SCALE: 1:1 WEIGHT: SHEET 1 OF 1
APPLICATION		DO NOT SCALE DRAWING		