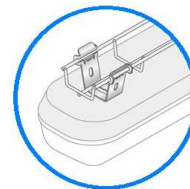
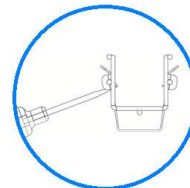
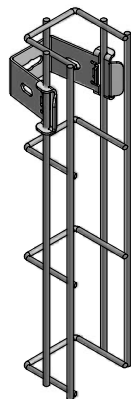
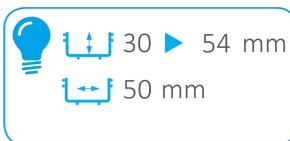
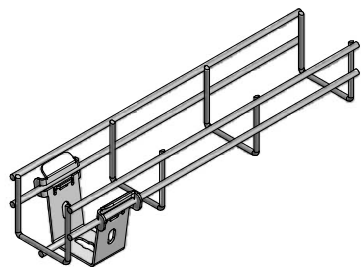


Chemin de câbles fil  
(Mesh tray)



Description	Code	Masse/Weight Kg/p	Ep./Th. mm	daN
SUL 50 ZM	553118	0,073	1,75	40



www.niedaxfrance.fr

**ZM** : High performance coated zinc according to NF A 91102

**ZM** : Revêtement haute tenue corrosion suivant NF A 91102

SUL 50 ZM  
SUL 50 BRACKET ZM



ASSISTANCE TECHNIQUE  
+33 (0)1 55 95 92 17  
pole.technique@niedax.fr

FT03252

**NIEDAX**  
France

